

---

# ARBICO *organics*

---

NATURAL & ORGANIC SOLUTIONS SINCE 1979

FALL/WINTER 2024



## *Time to Plant for Your Fall and Winter Harvest*

### Savor the Season's Abundance

- Fertilizers, & Soil Amendments for Plant Health
- Beneficial Nematodes to Control Overwintering Pests
- Insecticides, Weed & Disease Controls

*Get Started Today!*



# Contents

## PREDATORY INSECTS

- 3** Aphid Control
- 5** Whitefly Control
- 6** Fungus Gnat Control
- 7** Thrips Control
- 8** Mite Control
- 10** Mealybug/Scale Control
- 11** Moth Egg/Caterpillar Control

## 12 Beneficial Nematodes



## 16 Pest Insect Traps



## PEST CONTROL

- 18** Caterpillar Control
- 19** Grub & Beetle Control
- 26** Mosquito & Fungus Gnat
- 20** Insecticides
- 24** Fly Eliminators

## GROWING SUPPLIES

- 28** Crop Protection
- 39** Cleaning & Sanitizing
- 40** Weed Control
- 42** Tools & Supplies
- 44** Crawling Insect Control

## PLANT & SOIL HEALTH

- 30** Amendments
- 31** Soil Inoculants
- 33** Featured Fertilizers
- 34** Down to Earth Fertilizers
- 36** Disease Control

## 24 Fly Eliminators



## 40 Weed Control



## OUR PROMISE



Guaranteed Live Delivery



Customer Service



Commitment to Quality



<https://www.facebook.com/ARBICO.Organics>



<https://www.instagram.com/arbicoorganics/>



<https://arbico-organics.blogspot.com>



<https://www.youtube.com/user/ArbicoOrganics>

## HOW TO CONTACT US:

**800-827-2847**

[www.arbico-organics.com](http://www.arbico-organics.com)  
[customercare@arbico.com](mailto:customercare@arbico.com)

**OFFICE & STORE HOURS:**  
Monday - Friday: 8:00AM - 4:30PM  
(Arizona Time)

## Assassin Bug - *Zelus renardii*



**These Voracious Ambush Predators Will Stay In Your Crops & Devour A Wide Variety Of Pest Insects!**

**TARGET:** Leafhoppers, aphids, early instar caterpillars, flies, mites in conjunction with mite predators, and most other pests.



**DESCRIPTION:** These hardworking ambush predators are an excellent addition to any growing area, large or small. Feasting on a variety of pests, assassin bugs stay put in order to knock out an infestation. With an approximate two-month lifespan, these generalist predators will live, eat and reproduce in the area of release. *Zelus* start eating immediately after hatching, and by the second instar they produce a resin on their legs, which turns them into a walking sticky trap. Once captured, their prey is pierced with their rostrum and a digestive enzyme is injected into the prey and the insect is quickly killed. This method of predation allows for *Zelus* to take out prey much larger than themselves. These generalist predators are voracious and can be used efficiently in gardens, fields, orchards and greenhouses.

**SUGGESTED USE (Depending upon level of infestation):** Use 500 eggs in a 2,000-3,000 sq. ft. area every 2-3 weeks. Release preventively or at the first sign of an infestation. For heavy infestations, release 500-1,000 eggs weekly in no more than 2,000 square feet. Release 5-10 thousand eggs biweekly per acre. Shipped as eggs, assassin bugs will typically hatch in under a week.

**Temperature:** 55-110°F **Relative Humidity:** 10-75%

<b>1000105</b>	≈250 Eggs	<b>\$25.00</b>
<b>1000106</b>	≈500 Eggs	<b>\$40.00</b>
<b>1000107</b>	≈1,000 Eggs	<b>\$65.00</b>

Larger sizes available.

\*FREE SHIPPING in the contiguous 48 states. Ships Monday - Thursday via 2nd Day.

## Minute Pirate Bug - *Orius insidiosus*

**Excellent General Predator In Field Crops & Greenhouses.**

**TARGET:** Thrips, whiteflies, spider mites, aphids, psyllids, small caterpillars, insect eggs and others.

**DESCRIPTION:** Minute Pirate Bugs (*Orius spp.*) also known as flower bugs, are one of the most common general predators in field crops. Their diet consists of a variety of small pests. They are also known to attack adult thrips.



**SUGGESTED USE (Depending upon level of infestation):** Sold as adults. For maintenance, release 1 to 2 *Orius* per plant in greenhouses or 1 to 4 *Orius* per plant in hot spot areas outdoors. When treating a serious whitefly, aphid, thrips or other pest infestation, we recommend releasing up to 500 *Orius* per 250 sq. ft. area. For field crops, we recommend releasing between 100 and 2,000 *Orius* per acre, depending on the level of infestation.

**Temperature:** 64-82°F **Relative Humidity:** Moderate ≈60%

<b>1117001</b>	≈500 Count	<b>\$53.00</b>
<b>1117003</b>	≈1,000 Count	<b>\$88.00</b>
<b>1117004</b>	≈2,000 Count	<b>\$154.00</b>

**Overnight Shipping Required**

## Green Lacewing - *Chrysoperla spp.*



**Referred To As "Aphid-Lions," These Generalists Have Amazing Dispersal Abilities!**

**TARGET:** Aphids, mealybugs, spider mites, leafhopper nymphs, moth eggs, scale thrips, whiteflies and more.

**DESCRIPTION:** Green lacewing are available in all three life stages: egg, larva and adult. Green lacewing larvae paralyze their prey with venom and then draw out the body fluids of the pest into their large hollow jaws. Each lacewing larva will devour 200 or more pests or pest eggs a week during their two to three week developmental period.



**Temperature:** Minimum: 60°F Best: 75-90°F **Relative Humidity:** 30-50%

**Release Rate:** Every 7-10 days

### GREEN LACEWING EGGS:\*

<b>1110011</b>	≈5,000 Eggs	<b>\$27.00</b>
<b>1110016</b>	≈10,000 Eggs	<b>\$37.80</b>
<b>1110012</b>	≈25,000 Eggs	<b>\$75.00</b>
<b>1110013</b>	≈50,000 Eggs	<b>\$123.75</b>
<b>1110100</b>	≈5,000 Eggs on Cards	<b>\$30.00</b>
<b>1110102</b>	≈10,000 Eggs on Cards	<b>\$50.00</b>
<b>1110105</b>	≈25,000 Eggs on Cards	<b>\$100.00</b>

### GREEN LACEWING LARVAE:

<b>1110005</b>	≈400 Larvae in Hex Frame	<b>\$27.00</b>
<b>1110010</b>	≈1,000 Larvae in Bottle	<b>\$26.00</b>
<b>1110030</b>	≈5,000 Larvae in 5 Liter Bag	<b>\$105.00</b>
<b>1110032</b>	≈10,000 Larvae in Bucket	<b>\$180.00</b>

### GREEN LACEWING ADULTS:

<b>1110006</b>	≈100 Adults	<b>\$50.00</b>
<b>1110004</b>	≈250 Adults	<b>\$90.00</b>
<b>1110007</b>	≈500 Adults	<b>\$160.00</b>
<b>1110019</b>	≈1,000 Adults	<b>\$180.00</b>

**SUGGESTED USE (Depending upon level of infestation):**

Eggs	Larvae
Gardens & Greenhouses	Gardens & Greenhouses
≈1k-2k Eggs/1,000 sq. ft.	≈2-4/sq. ft.
Farms	Farms
≈2,000-40,000/Acre	≈1,000-2,000/Acre
Adults	
Gardens & Greenhouses	Farms
≈1-3/sq. ft., 100/Tree	≈200-500/Acre

**Weekly Programs and Discounts Available  
Larvae & Adults Require OVERNIGHT Shipping**

\*FREE SHIPPING in the contiguous 48 United States. Quantities of 1,000-25,000 eggs ship via USPS Priority only. Quantities of 50,000-250,000 ship via FedEx 2nd Day Air only. Expedited shipping available for an additional fee.

FREE SHIPPING does not apply to Green Lacewing Adults, Green Lacewing Larval Frames and Green Lacewing Larvae.

## Aphid Predator - *Aphidoletes aphidimyza*

**This Aphid Predator Attacks & Feeds On Over 60 Different Species Of Aphids.**

**TARGET:** Over 60 different aphids, including green peach aphids (*Myzus persicae*) and hemlock woolly adelgid (*Adelges tsugae*).

**DESCRIPTION:** Predacious to aphids, these insects will inject a paralyzing toxin into pest's legs and feed on aphid body contents, causing eventual death.

**SUGGESTED USE** (Depending upon level of infestation): Apply to existing infestations weekly, until pests subside. Use ≈1-3/10 sq. ft., ≈2-3/10 sq. ft. or ≈4,500/acre.

**Temperature:** Warm 64-77°F **Relative Humidity:** Moderate ≈70%

<b>1101001</b>	≈1,000 Pupae	<b>\$60.00</b>
<b>1101002</b>	≈1,000 Pupae in 4 x 250 Blister Packs	<b>\$65.00</b>
<b>1101004</b>	≈2,000 Pupae	<b>\$90.00</b>
<b>1101005</b>	≈10,000 Pupae	<b>\$250.00</b>

**Overnight Shipping Required**



*Aphidoletes aphidimyza*

## Aphid Parasite - *Aphidius colemani*

**Exceptional In Greenhouses Producing Vegetables & Ornamentals.**

**TARGET:** Aphids, especially melon and cotton aphids (*Aphis gossypii*).

**DESCRIPTION:** These tiny (1/8") parasitic wasps specifically target aphids to provide food and a place to oviposit. The adults respond to alarm signals from plants to locate the aphids and, once there, they feast on the honeydew produced by the aphids. The females will then lay their eggs inside aphid nymphs. The larvae will hatch and devour the aphid from inside, turning it into a mummy. The parasites are shipped to you in this stage; simply place them where the infestation is. Once mature, the adult wasp will chew its way out of the mummy and begin hunting aphids.

**SUGGESTED USE** (Depending upon level of infestation): Apply to existing infestations weekly, until pests subside. Use ≈1-8/1 sq. yd. or ≈500-3,000/acre.

**Temperature:** 70-77°F **Relative Humidity:** High ≈80%

<b>1101302</b>	≈500 Mummies	<b>\$43.00</b>
<b>1101301</b>	≈1,000 Mummies	<b>\$54.00</b>
<b>1101300</b>	≈1,000 Mummies in 10 x 100 Blister Packs	<b>\$56.00</b>
<b>1101303</b>	≈5,000 Mummies	<b>\$189.00</b>
<b>1101305</b>	≈5,000 Mummies in 50 x 100 Blister Packs	<b>\$195.00</b>
<b>1101304</b>	≈10,000 Mummies (2 x 5,000)	<b>\$340.00</b>

**Overnight Shipping Required**



*Aphidius colemani*

## Aphid Parasite - *Aphelinus abdominalis*

**These Ravenous Predators Will Eat & Parasitize Aphid Nymphs!**

**TARGET:** Aphids, including potato (*Macrosiphum euphorbiae*), foxglove (*Aulacorthum solani*), green peach (*Myzus persicae*), California laurel (*Euthoracaphis umbellulariae*), cotton (*Aphis gossypii*), melon (*Aphis gossypii*), bird cherry-oat (*Rhopalosiphum padi*), cereal (*Sitobian avenae*), and alfalfa aphids (*Acyrtosiphon pisum*).

**DESCRIPTION:** Not great fliers, these parasitic wasps nevertheless can hunt down and destroy large numbers of aphids. These predators will not only lay their eggs in aphid nymphs, they will eat those that they don't parasitize. This secondary method of killing has a powerful effect on the aphid population and provides females with additional protein to develop more eggs. As the larvae matures inside the nymph, they feed on it, turning it into a mummy. The parasites are shipped in this stage; simply place them where the infestation is. The mature adult will chew a hole in the back of the mummy and emerge. This species is better able to handle high temperatures than the *Aphidius* species.

**SUGGESTED USE** (Depending upon level of infestation): Apply before the onset of infestation. Use ≈250/5,000 sq. ft. or ≈1,000-4,000/acre.

**Temperature:** 70-77°F **Relative Humidity:** Low-High ≈60-80%

<b>1101101</b>	≈250 Mummies	<b>\$83.00</b>
<b>1101103</b>	≈1,000 Mummies	<b>\$235.00</b>

**Overnight Shipping Required**



*Aphelinus abdominalis*

## Aphid Parasite - *Aphidius ervi*

**This Non-Stinging Parasitic Wasp Attacks Larger Aphid Species.**

*Image Citation: Alex Wild*

**TARGET:** Aphids, especially potato (*Macrosiphum euphorbiae*), glasshouse potato (*Aulacorthum solani*), green peach (*Myzus persicae*), foxglove (*Aulacorthum solani*) and pea aphids (*Acyrtosiphon pisum*). Also attacks greenbug/wheat (*Shizaphis graminum*), yellow rose (*Rhodobium orientis*), English grain (*Sitobion avenae*) and other aphids.

**DESCRIPTION:** These mini-wasps (1/8") are vigorous fliers and will aggressively seek out aphid populations, no matter how small. Once they find the aphids, they feed on the honeydew produced by the aphids and lay their eggs inside the aphid nymphs. As the larvae feed on the nymphs from the inside, the nymph turns into a mummy. The parasites are shipped to you this stage; simply place them where the infestation is. Once mature, the adult wasp will chew its way out of the mummy and begin its own search for aphids.

**SUGGESTED USE** (Depending upon level of infestation): Apply to existing infestations weekly, until pests subside. Use ≈1-3/10 sq. ft. or 1-8/sq. yd.

**Temperature:** 64-75°F **Relative Humidity:** Moderate ≈70%

<b>1001001</b>	≈250 Mummies	<b>\$65.00</b>
<b>1001002</b>	≈500 Mummies	<b>\$100.00</b>
<b>1001003</b>	≈1,000 Mummies	<b>\$150.00</b>
<b>1001004</b>	≈1,000 Mummies in 10 x 100 Blister Packs	<b>\$155.00</b>
<b>1001005</b>	≈5,000 Mummies	<b>\$550.00</b>

**Overnight Shipping Required**



*Aphidius ervi*



## Integrated Pest Management of Whiteflies

1. Carefully inspect new plants before transplanting.
2. Dip foliage and root ball in soapy water, or hydrogen peroxide solution, to clean and kill any existing whitefly eggs, nymphs or adults.
3. Monitor pest thresholds with yellow sticky traps or ribbons.
4. Release Green Lacewing preventatively before infestation becomes severe.
5. Consider specialist parasites and predators for targeted whitefly infestations.
6. For quick knockdown control, consider sprays with a low environmental impact such as *Beauveria bassiana* products (see page 23) or Neem based sprays.
7. Clean tools and equipment as well as greenhouse structures between growing seasons. Shop Cleaning & Sanitizing online at [www.arbico-organics.com](http://www.arbico-organics.com)

## Whitefly Parasite - *Eretmocerus eremicus*

**Better Adapted To Higher Temperatures, Including Temperatures That Fluctuate Day & Night! Good For Desert Climates.**



**TARGET:** Greenhouse whiteflies (*Trialeurodes vaporarum*), sweet potato whiteflies (*Bemisia tabaci*), silverleaf whiteflies (*Bemisia argentifolii*), and banded-winged whiteflies (*T. abutiloneus*) and others.

**DESCRIPTION:** The whitefly parasite (parasitoid) is a tiny wasp that host feeds and parasitizes the scale (nymphs) of whiteflies. The time from egg laying to adult emergence is approximately 22 days. Can be used with Green Lacewings.

**SUGGESTED USE** (Depending upon level of infestation): For prevention: use 1,000/10,000 sq. ft. Light infestations: 1,000/1,000 sq. ft. Heavy infestations: use 5,000/1,000 sq. ft. Hang squares with parasitized pupae on plant foliage at first sign of infestation. Order weekly for approximately 2-6 weeks until control is achieved. Call to set up your customized weekly program.

**Temperature:** Moderate 62-82°F **Relative Humidity:** Minimum 40%

**1000703** ≈5,000 in 20 x 250 Blister Packs **\$94.95**

**Overnight Shipping Required**

## Whitefly Parasite - *Encarsia formosa*



**Save Your Plants From The Ravages Of Destructive Whiteflies! Good For Greenhouses.**

**TARGET:** Greenhouse whiteflies (*Trialeurodes vaporarum*), sweet potato whiteflies (*Bemisia tabaci*) and approximately 15 other species of whitefly.



**DESCRIPTION:** The whitefly parasite (parasitoid) is a tiny wasp that host feeds and parasitizes the scale (nymphs) of whiteflies. The time from egg laying to adult emergence is approx. 25 days. Can also be used with Green Lacewings.

**SUGGESTED USE** (Depending upon level of infestation): **For prevention:** Use 500-1,000/15,000 sq. ft. **Light infestations:** (less than 1 adult whitefly per 50-100 plants) Use 1,000-2,000/5,000-10,000 sq. ft. for minimum of 3 weeks or until control is achieved. **Heavy infestations:** Use 3,000/3,500 sq. ft. for a minimum of 3 weeks or until control is achieved. Hang squares with parasitized pupae on plant foliage at first sign of infestation. Order weekly for approximately 2-6 weeks until control is achieved. Please call to set up your customized weekly program.

**Temperature:** Moderate 76-85°F **Relative Humidity:** Moderate ≈50-70%

<b>1132001</b>	≈1,000 Count	<b>\$32.50</b>
<b>1132002</b>	≈3,000 Count	<b>\$46.00</b>
<b>1132003</b>	≈5,000 Count	<b>\$60.00</b>

**2nd Day Shipping Required**

\*FREE SHIPPING in the contiguous 48 states. Ships via 2nd Day Only. Ships only on Monday, Tuesday and Wednesday.

## Whitefly Predator - *Delphastus catalinae*

**These Tiny Brown Beetles Consume Several Hundred Pests Daily!**



**TARGET:** Aphids, scale, thrips, and especially greenhouse and outdoor sweet potato whiteflies and other soft-bodied insect pests.

**DESCRIPTION:** Females lay ≈3-4 eggs daily and adults live for approximately one month. Adult beetles capture prey with their mandibles, inject paralyzing venom & feed on pest body fluids. Shipped as adults, they should be used at the first signs of infestation.

**SUGGESTED USE** (Depending upon level of infestation): Upon arrival, release at sundown. May be stored at temperatures between 50-60°F for 1-2 days. Can be combined with other whitefly parasites.

**Temperature:** Moderate 65-90°F **Relative Humidity:** High ≈70% & Higher

<b>1126001</b>	≈100 Count	<b>\$50.00</b>
<b>1126003</b>	≈200 Count	<b>\$90.00</b>
<b>1126002</b>	≈1,000 Count	<b>\$190.00</b>

**Overnight Shipping Required**

**If You're Unsure Which Beneficial Insect Or Predator Is Right For Your Conditions, Call One Of Our Specialists At 1-800-827-2847.**



## Integrated Pest Management of Fungus Gnats

1. Monitor and trap with yellow sticky traps to assess the severity of infestation.
2. Control soil moisture by providing proper drainage, avoiding standing water and allowing media to dry between waterings.
3. Circulate air and prune plants to ensure adequate air flow.
4. Prevent and treat infestations with *Bacillus thuringiensis israelensis* (see page 26).
5. Apply NemAttack *Steinernema feltiae* Beneficial Nematodes to parasitize fungus gnat larvae as well as thrips.
6. Rove beetles (*Dalotia coriaria*) are excellent predators that can establish in growing environments and control multiple soil dwelling pests.

## Rove Beetle - *Dalotia coriaria* (= *Atheta coriaria*)

### For Indoor Control Of Soil Dwelling Pests!

**TARGET:** Fungus gnats (sclerid flies), thrips and shore flies.

**DESCRIPTION:** "Rove beetles" will feed on small soil-dwelling pest larvae and eggs. Adults are a brown-black color, 3-4 mm long and winged. They are predacious in all stages and develop from egg to adult in about 21 days; passing through three larval instars prior to pupation and adulthood. Adults consume about 150 pest fungus gnat eggs per day. Compatible with *Stratiolaelaps scimitus* (= *Hypoaspis miles*). Winged adults have high dispersal and colonization rates and are not recommended for outdoor use.



**SUGGESTED USE** (Depending upon level of infestation): Use season-long, in covered crops such as ornamentals, cucumbers, strawberries and mushrooms. Apply directly to growing medium surface. Apply approx. 1-5 predators per sq. ft. For high infestation, increase application rate and consider pairing with another suitable predator or parasite like *S. scimitus*, beneficial nematodes, or specific mite predators.

**Temperature:** Moderate 55-80°F **Relative Humidity:** 50-80%

1101330	≈500 Adults	\$54.00
1101331	≈1,000 Adults	\$78.00
1101332	≈3,000 Adults	\$170.00
1101334	≈5,000 Adults	\$250.00

**Overnight Shipping Required**

## Fungus Gnat Predator - *Stratiolaelaps scimitus* (= *Hypoaspis miles*)

### Stop Destructive Fungus Gnats & Thrips In Their Developing Soil Stages.

**TARGET:** Fungus gnats, western flower thrips, springtails, mold mites, spider mites, cactus root mealybugs, strawberry root weevils and black vine root weevils.



**DESCRIPTION:** This tiny brown mite naturally inhabits the top layer of soil where larvae and pupae dwell. Female predatory mites lay their eggs in soil and the nymphs and adults feed on pests.

**SUGGESTED USE** (Depending upon level of infestation): ≈5,000-10,000 mites treat approximately 1,000 sq. ft. Release ≈25,000-50,000/acre depending on level of infestation. Apply weekly until infestation subsides. Weekly release programs available. Please Call. Trap adult infestations using Blue Sticky Traps. Reinforce with applications of beneficial nematodes.

**Temperature:** Moderate 60-74°F **Soil Conditions:** Moist soil. Not too damp.

1154000	≈12,500 Count	\$21.00
1154002	≈25,000 Count	\$30.00
1154005	≈50,000 (2 x 25,000)	\$50.00
1154010	≈125,000 in 5 Liter Bag	\$130.00

**Overnight Shipping Required**

## Control Fungus Gnat Larvae Using *Bacillus thuringiensis israelensis*

Include applications of Bti in your fungus gnat IPM plan. Bti works to control larvae, the stage fungus gnats are most damaging to plant roots.

It can be used in conjunction with Beneficial Nematodes and Fungus Gnat predators as part of an IPM plan. **For additional fungus gnat control solutions, see page 26.**



## NemAttack™ Sf Beneficial Nematodes

Sf Beneficial Nematodes interrupt thrips reproduction and reduce local populations leading to fewer adults and less resulting damage. Use in conjunction with predatory insects as part of an integrated pest management program. Apply with a watering can, hose end sprayer or backpack sprayer. **See pages 12-15 for more information.**



## Thrips Predator - *Amblyseius cucumeris*

These Beneficial Mites Consume Vast Quantities Of Thrips.

**TARGET:** Prefers greenhouse and western flower thrips. They will also eat spider mites, russet mites and pollen.

**DESCRIPTION:** Tan colored adult females lay about 35 small white eggs throughout their lifespan of about 30 days. During the 7-10 day nymph stage, predation begins. Adults will consume about 1 pest a day. Predators are shipped as adults.

**SUGGESTED USE (Depending upon level of infestation):** For best results, apply before onset of thrips infestation. For prevention, use at a rate of 10-20 mites per sq. ft. at weekly intervals. Use continuous release sachets at 1 per 3 sq. ft. for 3-6 weeks. Spot treat with 10-40 mites per sq. ft. weekly until infestation subsides. Monitor with blue sticky traps (see page 17).

**Temperature:** Moderate 66-80°F **Relative Humidity:** Moderate 65-72%

### BULK SIZES:

1152230	≈20,000 in Bran only	<b>\$22.00</b>
1152231	≈20,000 in Vermiculite only	<b>\$22.00</b>
1152207	≈25,000 in Bran/Vermiculite Mix	<b>\$30.00</b>
1152233	≈50,000 in Bran only	<b>\$47.00</b>
1152224	≈50,000 in Vermiculite only	<b>\$47.00</b>
1152204	≈50,000 in Bran/Vermiculite Mix	<b>\$45.00</b>
1152205	≈100,000 in Bran only	<b>\$60.00</b>
1152234	≈100,000 in Vermiculite only	<b>\$60.00</b>
1152235	≈250,000 in Bran only	<b>\$120.00</b>
1152223	≈250,000 in Vermiculite only	<b>\$120.00</b>
1152206	≈250,000 in Bran/Vermiculite Mix	<b>\$115.00</b>
1152209	≈500,000 in Bran/Vermiculite Mix	<b>\$200.00</b>

### CONTROLLED RELEASE W/HOOKS:

1152215	≈25,000 in 100 Mini sachets w/Hooks	<b>\$25.00</b>
1152219	≈125,000 in 500 Mini Sachets w/Hooks	<b>\$68.75</b>
1152201	≈200,000 in 200 Sachets w/Hooks	<b>\$90.00</b>
1152221	≈200,000 in 400 Mini Sachets w/Hooks	<b>\$80.00</b>
1152222	≈250,000 in 1,000 Sachets w/Hooks	<b>\$135.00</b>
1152228	≈500,000 in 500 Mini Sachets w/Hooks	<b>\$185.00</b>

### CONTROLLED RELEASE ON STICKS:

1152216	≈25,000 in 100 Mini Sachets on Sticks	<b>\$25.00</b>
1152225	≈125,000 in 500 Mini Sachets on Sticks	<b>\$105.00</b>
1152226	≈250,000 in 1,000 Mini Sachets on Sticks	<b>\$150.00</b>
1152227	≈500,000 in 2,000 Mini Sachets on Sticks	<b>\$280.00</b>

### CONTROLLED RELEASE-SPECIALTY:

1152203	≈300,000 in 300 GEMINI Sachets	<b>\$115.00</b>
1152220	≈1,600,000 in 6 x 525 ft. Strips of Sachets	<b>\$600.00</b>

**Overnight Shipping Required**



*Neoseiulus  
(=Amblyseius)  
cucumeris*

## Thrips & Whitefly Predator - *Amblyseius swirskii*

For Use On A Variety Of Pest Mites, Thrips & Whiteflies.

**TARGET:** Western flower thrips, onion thrips, broad mites, hemp russet mites, glasshouse whiteflies, tobacco whiteflies or silverleaf whiteflies.

**DESCRIPTION:** These predacious mites feed on various pest insects in their developing adult stages, pollen and mold. They may consume about 10 thrips or whitefly larvae a day and up to about 20 whitefly eggs per day. They will not undergo diapause, and can be used in protected crops in cooler growing areas.

**SUGGESTED USE (Depending upon level of infestation):** Introduce before the onset of infestation, when temperatures are no lower than 60°F. Apply at a rate of 10 mites per sq. ft. every other week as needed, or apply continuous release sachets every 2-4 weeks. Use 1 sachet per plant, or 1 per 3 plants if canopy is touching. Use sachets on sticks during propagation or where canopy cannot support hooks. Not recommended for use on infestations in tomato crops.

**Temperature:** Moderate 77-85°F

**Relative Humidity:** 70%

### BULK SIZES:

1101312	≈25,000 in Tube	<b>\$68.00</b>
1101319	≈50,000 in Tube	<b>\$120.00</b>
1101311	≈125,000 in 5 Liter Bag	<b>\$240.00</b>
1101309	≈200,000 Bulk	<b>\$340.00</b>

### CONTROLLED RELEASE:

1101317	≈50,000 in 200 Mini Sachets w/Hooks	<b>\$140.00</b>
1101308	≈62,500 in 250 Mini Sachets w/Hooks	<b>\$170.00</b>
1101318	≈62,500 in 500 Mini Sachets on Sticks	<b>\$245.00</b>
1101306	≈125,000 in 500 Mini Sachets w/Hooks	<b>\$250.00</b>
1101316	≈125,000 in 1,000 Mini Sachets w/Hooks	<b>\$365.00</b>
1101314	≈125,250 in 6 x 328 ft. Strips of Sachets	<b>\$500.00</b>
1101315	≈250,000 in 1,000 Mini Sachets w/Hooks	<b>\$480.00</b>

**Overnight Shipping Required**



*Amblyseius  
swirskii*

## Mite Predator - *Amblyseius andersoni*

**Great For Pre-Emergent Control Of Pest Mite Infestations!**

**TARGET:** Various pest mites including broad mites, cyclamen mites, two-spotted spider mites, red spider mites, tomato russet mites and rust mites.

**DESCRIPTION:** This predatory mite is less than 1mm long and light brown. Adult females lay about 35 eggs in a lifetime, arranging eggs onto leaf hairs. This predatory mite feeds on all stages of pest mites, thrips, pollen and honeydew.

**SUGGESTED USE (Depending upon level of infestation):** For best results, apply as a preventative treatment of mite infestations. Sachets allow for controlled release of mites over 4-6 weeks. Apply at a rate of 1-2 mites per sq. ft. or 1 sachet per plant. Place sachets within plant canopy. Use sachets on sticks at 1 per propagation tray or where canopy cannot hold sachet on hook. Replace sachets every four weeks for continued control.

**Temperature:** Moderate 42-100°F **Relative Humidity:** High if in higher temps.

**BULK SIZES:**

<b>1101324</b>	≈25,000 in Tube	<b>\$140.00</b>
<b>1101327</b>	≈50,000 in 1 Liter Bottle	<b>\$165.00</b>
<b>1101321</b>	≈125,000 in 5 Liter Bag	<b>\$375.00</b>

**CONTROLLED RELEASE:**

<b>1101323</b>	≈25,000 in 200 Mini Sachets w/Hooks	<b>\$160.00</b>
<b>1101350</b>	≈25,000 in 200 Mini Sachets on Sticks	<b>\$175.00</b>
<b>1101325</b>	≈62,500 in 250 Sachets w/Hooks	<b>\$225.00</b>
<b>1101355</b>	≈125,000 in 1,000 Mini Sachets on Sticks	<b>\$720.00</b>
<b>1101322</b>	≈125,250 in 6 x 328 ft. Strips of Sachets	<b>\$670.00</b>

**Overnight Shipping Required**



*Amblyseius andersoni*

## Spider Mite Destroyer - *Feltiella acarisuga*

**We Recommend This Predator When Spider Mite Infestations Are Widespread.**

**TARGET:** Two spotted spider mites, carmine spider mites, European red mites; various mites.

**DESCRIPTION:** The larvae of this tiny gall-midge feeds on two-spotted spider mites and various other species of spider mites. Recommended to be used with *P. persimilis* when spider mite infestations are severe to rapidly knock back the pest mites. *Feltiella* works best on plants that have hairy stems. Adults do not prey on spider mites, but search for colonies and deposit eggs next to them. Eggs hatch in 2 days and larvae feed on all stages of spider mites for 4-6 days. The entire life cycle is about 15 days.

**SUGGESTED USE (Depending upon level of infestation):** For light infestations, introduce <1/1,000 sq. ft. or 500/acre every 7 days, for at least 3 weeks. For heavy infestations, introduce 2-3/1,000 sq. ft. or 1,000/acre every 7 days, for at least 3 weeks.

**Temperature:** Moderate 60-77°F **Relative Humidity:** High 50-90%

<b>1155701</b>	≈250 Count	<b>\$144.00</b>
----------------	------------	-----------------

**Overnight Shipping Required**



*Feltiella acarisuga*

## Mite Predator - *Neoseiulus (=Amblyseius) californicus*

**Good For Areas Where Temperatures Fluctuate Greatly Such As Deserts.**

**TARGET:** Various spider mites, cyclamen mites, broad mites and russet mites.

**DESCRIPTION:** This tiny, ivory, pear-shaped predatory mite feeds on a variety of pests on crops including: cucumbers, tomatoes, strawberries, tropical foliage plants, and greenhouse roses. Although adults consume prey at a relatively slow rate of about one egg per day, they can survive longer under starvation conditions. During their lifetime of about 20 days, females will lay approx. 1-3 eggs per day. Eggs hatch within a few days and adulthood is reached in about 4-12 days.

**SUGGESTED USE (Depending upon level of infestation):** Use ≈1,000 per 4,500 sq. ft. in greenhouses to treat for broad mite. Use ≈10,000 per acre to treat for cyclamen mites on strawberries. Use weekly until infestation subsides.

**Temperature:** Warm 50-105°F **Relative Humidity:** 40-80%

**BULK SIZES:**

<b>1151213</b>	≈2,000 Count	<b>\$43.00</b>
<b>1151209</b>	≈5,000 Count	<b>\$65.50</b>
<b>1151210</b>	≈10,000 Count (2 x 5,000)	<b>\$106.00</b>
<b>1151212</b>	≈25,000 Count	<b>\$128.00</b>

**CONTROLLED RELEASE W/HOOKS:**

<b>1151216</b>	≈10,000 - 100 Sachets w/Hooks	<b>\$80.00</b>
<b>1151271</b>	≈25,000 - 100 Sachets w/Hooks	<b>\$85.00</b>
<b>1151215</b>	≈25,000 - 200 Sachets w/Hooks	<b>\$175.00</b>
<b>1151217</b>	≈50,000 - 500 Sachets w/Hooks	<b>\$270.00</b>
<b>1151276</b>	≈62,500 - 250 Sachets w/Hooks	<b>\$135.00</b>
<b>1151277</b>	≈125,000 - 500 Sachets w/Hooks	<b>\$250.00</b>
<b>1151278</b>	≈125,000 - 1,000 Sachets w/Hooks	<b>\$750.00</b>
<b>1151279</b>	≈250,000 - 500 Sachets w/Hooks	<b>\$350.00</b>

**CONTROLLED RELEASE ON STICKS:**

<b>1151295</b>	≈25,000 - 200 Sachets on Sticks	<b>\$190.00</b>
<b>1151296</b>	≈125,000 - 1,000 Sachets on Sticks	<b>\$720.00</b>

**CONTROLLED RELEASE-SPECIALTY:**

<b>1151292</b>	≈25,000 - 100 Gemini Sachets	<b>\$190.00</b>
<b>1151290</b>	≈125,000 - Bugline - 6 x 328 ft. Sachet Strips	<b>\$625.00</b>

**Overnight Shipping Required**



*Neoseiulus (=Amblyseius) californicus*

### Sachets

Sachets are available as Hooks, Sticks, Gemini and Bugline. Find the option that works right for your needs.



## Mite Predator - *Neoseiulus (=Amblyseius) fallacis*

**An Excellent Mite Predator For Control Of Many Different Types Of Mites.**

*Image Citation: Photo by Dr. Art Agnello, Cornell University*

**TARGET:** Two spotted spider mites, broad mites, cyclamen mites, hemp russet mites; various mites.

**DESCRIPTION:** This predatory mite effectively suppresses cyclamen mites in strawberry fields, broad mites in greenhouse crops, European red mites and two-spotted spider mites in orchards, spider mites on roses and vegetable crops in greenhouses and general mite problems on mint and hops in northern climates. Eggs and nymphs are difficult to see as they are small and almost transparent. Adults are pear-shaped and ivory until feeding, when they take on the red or brown coloration of their prey. Adult females consume around 2-16 pest mites per day and lay ≈20-60 eggs during a 14-60 day life-cycle. The transition from egg to adult stage takes about 7-9 days.

**SUGGESTED USE** (Depending upon level of infestation): Good for cold climates! Use preventatively; over-winters and sustains on pollen. Release at the start and end of the season. Use ≈1,000 per 4,500 sq. ft. or 10,000 per acre.

**Temperature:** Moderate 50-80°F **Relative Humidity:** Minimum 50%

<b>1151400</b>	≈500 Count	<b>\$38.00</b>
<b>1151401</b>	≈1,000 Count	<b>\$52.00</b>
<b>1151402</b>	≈2,000 Count	<b>\$98.00</b>
<b>1151404</b>	≈10,000 count	<b>\$240.00</b>

**Overnight Shipping Required**



*Neoseiulus (=Amblyseius) fallacis*

## Spider Mite Destroyer - *Stethorus punctillum*

**Predatory In Both Larval & Adult Stages. Consumes All Life Stages Of Spider Mites.**

**TARGET:** Two spotted spider mites, European red mites, spruce spider mites, southern red mites; various mites.

**DESCRIPTION:** Using smell, this tiny ladybug is an effective locator and as an adult will consume more than 40 mites per day. Females lay up to 15 eggs per day. Development to the adult stage takes around 18 days at a temperature of 70°F and the total lifespan of the predator is about 9 weeks. They are known to survive temperatures over 100°F in field crops.

**SUGGESTED USE** (Depending upon level of infestation): Use 100 adults per 300 sq. ft. of infested area. Release adult beetles into mite infested areas and look for signs of reproduction (larvae, pupae, and adults) after four weeks. This predator is more mobile than spider-mite predators (predatory mites) but takes longer to establish, so releases of spider-mite predators should also be made into mite infested areas.

**Temperature:** Moderate 73-77°F **Relative Humidity:** High 60%

<b>1113300</b>	≈50 Count	<b>\$80.00</b>
<b>1113301</b>	≈100 Count	<b>\$105.00</b>

**Subject to seasonal availability.**

**Overnight Shipping Required**



*Stethorus punctillum*

## Mite Predator - *Phytoseiulus persimilis*

**The Mite Predator With The Highest Consumption & Dispersal Rate.**

*Image Citation: All rights reserved to BioBee Sde Elyahu Ltd.*

**TARGET:** Two spotted spider mites and various other mites.

**DESCRIPTION:** These predatory mites have high consumption rates, feeding on approx. 5-20 pests and pest eggs per day! Females will lay about 60 eggs throughout their 50-day lifespan. They will not enter a diapause stage in enclosed or greenhouse settings; making them active year round. Adults will begin feeding as soon as they are applied.

**P. persimilis PLUS** is reared in an innovative way to include mobile mites (adults and juveniles) as well as eggs. *P. persimilis* PLUS arrives pale and changes to orange/red after predation begins. Adults begin feeding upon dispersal. Eggs can mature in about a week (at temps between 70-80°F). The variety of life stages allow for both immediate and ongoing control as the mites mature.

### **P. persimilis PLUS Sachets**

PLUS Controlled Release sachet mites emerge between 8 -12 days after application. Best for preventative use. PLUS RAPID Release sachets are used for hot spot treatment with emergence around 3-5 days.

**SUGGESTED USE** (Depending upon level of infestation):

Level/Type	Bulk	Sachets
<b>Low Infestation</b>	1-3 Mites per sq.ft.	1 Controlled Release Sachet per 50 sq.ft.
<b>Moderate Infestation/ Speckling</b>	5+ Mites per sq.ft.	1 Rapid Release Sachet per 20 sq.ft.
<b>Webbing/Outbreak</b>	10+ Mites per sq.ft. after knockdown/cleaning	1 Rapid Release Sachet per 10 sq.ft.
<b>Outdoor Crops</b>	20,000 - 200,000 Mites per acre depending on infestation level	
<b>Clones</b>		1 Sachet per plant

**Temperature:** Moderate: 68-90°F **Relative Humidity:** High: 60-90%

### **P. PERSIMILIS PLUS BULK SIZES:**

<b>1151250</b>	PLUS ≈2000 Bottle	<b>\$23.00</b>
<b>1151251</b>	PLUS ≈4000 Bottle	<b>\$40.00</b>
<b>1151252</b>	PLUS ≈10,000 Bottle	<b>\$85.00</b>
<b>1151253</b>	PLUS ≈20,000 Bottle	<b>\$120.00</b>

### **P. PERSIMILIS PLUS CONTROLLED RELEASE:**

<b>1151235</b>	PLUS ≈5,000 in 50 sachets w/hooks	<b>\$50.00</b>
<b>1151236</b>	PLUS ≈10,000 in 100 sachets w/hooks	<b>\$95.00</b>
<b>1151230</b>	PLUS ≈25,000 in 250 sachets w/hooks	<b>\$225.00</b>
<b>1151231</b>	PLUS ≈50,000 in 500 sachets w/hooks	<b>\$387.50</b>

### **P. PERSIMILIS PLUS RAPID RELEASE:**

<b>1151245</b>	PLUS RAPID ≈5,000 in 50 sachets w/hooks	<b>\$50.00</b>
<b>1151246</b>	PLUS RAPID ≈10,000 in 100 sachets w/hooks	<b>\$95.00</b>
<b>1151240</b>	PLUS RAPID ≈25,000 in 250 sachets w/hooks	<b>\$225.00</b>
<b>1151241</b>	PLUS RAPID ≈50,000 in 500 sachets w/hooks	<b>\$387.50</b>

**Overnight Shipping Required**



*Phytoseiulus persimilis*

## Mealybug Parasitoid - *Anagyrus spp.*

**Stop Destructive Mealybugs With This Beneficial Parasitoid.**

*Image Citation: All rights reserved to BioBee Sde Elyahu Ltd.*

**TARGET:** Citrus mealybugs, grape mealybugs, vine mealybugs, cypress mealybugs, obscure mealybugs, longtail mealybugs and most *Planococcus* and *Pseudococcus spp.*



**DESCRIPTION:** These solitary parasitoid wasps of mealybugs are shipped as mummies, hatch within five days of arrival and immediately begin to oviposit. Once the egg is laid inside the mealybug, the larva develops and consumes the mealybug. One female will parasitize nearly 50 mealybugs.

**SUGGESTED USE (Depending upon level of infestation):** Release 1 wasp per 5 sq. ft. every two weeks and or field application use about a minimum of 2,000 mummies/acre monthly. Keep at room temperature to ensure emergence. Remove bottle top, place near infested areas and let wasps emerge on their own. DO NOT use near ants as they will inhibit wasp parasitism & reproduction.

**Temperature:** Moderate 65-93°F **Relative Humidity:** Moderate ≈40-60%

<b>1132060</b>	≈100 Mummies	<b>\$75.00</b>
<b>1132061</b>	≈200 Mummies	<b>\$80.00</b>
<b>1132072</b>	≈500 Mummies	<b>\$185.00</b>

Currently only available for sale within the state of CA.

**Overnight Shipping Required**

## Mealybug Destroyer - *Cryptolaemus montrouzieri*

**These Tiny Ladybird Beetles Devour Pest Mealybugs In Both The Larval & Adult Stages.**

*Image Citation: Nijel Cruz*

**TARGET:** Mealybugs, aphids, mites, thrips, whiteflies, and other soft-bodied insect pests.



**DESCRIPTION:** *Cryptolaemus* is a small dark brown ladybug with an orange head and tail (*elytra*). The larvae are up to 13 mm long and are white with a wax-like covering. The pupae are found around stems, the underside of leaves, greenhouse structures and other sheltered areas. Shipped as adults and most effective in severe infestations.

**SUGGESTED USE (Depending upon level of infestation):** 250-1,000/acre every 2 weeks, 2-3 releases. Use indoors and outdoors. Weekly release programs available. Please call.

**Temperature:** Low-High 64-81°F **Relative Humidity:** Moderate ≈70-80%

<b>1114702</b>	≈100 Adults	<b>\$77.00</b>
<b>1114703</b>	≈250 Adults	<b>\$110.00</b>
<b>1114704</b>	≈500 Adults	<b>\$210.00</b>
<b>1114705</b>	≈1,000 Adults (2 x 500)	<b>\$400.00</b>
<b>1114710</b>	≈5,000 Adults (10 x 500)	<b>\$1,200.00</b>

**Overnight Shipping Required**

## Red Scale Parasite - *Aphytis melinus*

**Use These Parasitic Wasps On A Variety Of Armored Scale Pests!**



**TARGET:** California red scales, citrus red scales, oleander scales, San Jose scales, ivy scales, yellow scales and other armored scale varieties.

**DESCRIPTION:** Shipped as adults. Females lay their eggs in host scale. Larvae hatch inside host bodies and consume and kill scale. One adult will kill about 30 scale insects in one generation. Adult parasites live approximately 26 days.

**SUGGESTED USE (Depending upon level of infestation):** Release about 1-2 wasps per sq. ft. or about 5,000/acre. Release weekly and 1-3 applications are usually required depending upon infestation.

**Temperature:** Moderate 76-85°F **Relative Humidity:** Moderate ≈40-50%

<b>1122001</b>	≈10,000 Adults	<b>\$75.00</b>
<b>1122002</b>	≈25,000 Adults	<b>\$80.00</b>
<b>1122003</b>	≈50,000 Adults	<b>\$120.00</b>

**Overnight Shipping Required**

### Portable, Convenient & Provides On the Spot Detection!



**Active Eye 60X Clip-On Phone Microscope**  
2000200 **\$10.49**

**Active Eye Microscope 100X**  
2000205 **\$21.99**



## Moth Egg Parasites - *Trichogramma spp.*



### Prevent Caterpillar Damage On Crops!

**TARGET:** The egg stages of more than 200 *Lepidopteran* pests including: codling moths, borers, loopers, webworms, cutworms, bollworms, tomato hornworms and corn earworms.

**DESCRIPTION:** *Trichogramma spp.* lay their eggs in the pest eggs, killing them. Adults emerge 2-3 days after release. They live 7-75 days depending on temperature and moisture. *Trichogramma* are shipped in the parasitized host egg.

**Trichogramma Hanging Tabs/Cards:** Cards and tabs are the fastest way to introduce *Trichogramma* into the growing area. Eggs arrive on hanging cards for easy and targeted application in the plant canopy.

**Trichogramma Hanging Dispensers:** Dispensers are uniquely designed for early introduction and preventative use before high pest pressure. They are designed to have 4 waves of releases for longer control.

This format is more resistant to predator damage and is more weather resistant. **Trichogramma Capsules:** Capsules also provide 4 waves of *Trichogramma* releases and are best used preventatively. They are designed for use by automation (drone, tractor), but also great for hard-to-reach areas. These sturdy capsules have precision release holes for wasps to emerge while keeping other pests out.



**SUGGESTED USE** (Depending upon level of infestation): Use ≈1 tab/3,000 sq. ft. Release at first flight of moths and every 7-10 days thereafter until infestation subsides. **DISPENSERS/CAPSULES:** 50,000-200,000 parasites/acre. Use 3 dispensers/capsules to treat up to 3000 sq. ft. Use preventatively where historically pests have been seen, or as early in the pest lifecycle as possible (eggs must be present).

**Temperature:** Minimum 50°F      **Relative Humidity:** Moderate

### *Trichogramma pretiosum*

General predator.

#### BULK:

**1131055** ≈1,000,000      **\$225.00**

#### CONTROLLED RELEASE - DISPENSERS:

**1131062** ≈7,500 - 3 Dispensers      **\$18.50**

**1131062** ≈12,500 - 5 Dispensers      **\$25.00**

**1131062** ≈25,000 - 10 Dispensers      **\$37.50**

**1131062** ≈62,500 - 25 Dispensers      **\$43.75**

**1131065** ≈125,000 - 50 Dispensers      **\$75.00**

#### CONTROLLED RELEASE - CAPSULES:

**1131070** ≈5,000 - 5 Capsules      **\$17.50**

**1131070** ≈10,000 - 10 Capsules      **\$20.00**

**1131070** ≈30,000 - 30 Capsules      **\$37.50**

**1131071** ≈60,000 - 60 Capsules      **\$60.00**

**1131075** ≈90,000 - 90 Capsules      **\$67.50**

### *Trichogramma brassicae*

For low lying crops, cole crops; cabbage loopers and European Corn Borer.

#### CARDS:

**1131910** ≈10,000 (3 Tabs)      **\$18.50**

**1131903** ≈20,000 (6 Tabs)      **\$20.00**

**1131911** ≈100,000 - 1 Card (30 Tabs)      **\$40.00**

#### BULK EGGS:

**1131950** ≈100,000      **\$32.00**

**1131955** ≈1,000,000      **\$225.00**

#### CONTROLLED RELEASE - DISPENSERS:

**1131963** ≈7,500 - 25 Dispensers      **\$18.50**

**1131963** ≈10,000 - 5 Dispensers      **\$25.00**

**1131963** ≈25,000 - 10 Dispensers      **\$37.50**

**1131963** ≈62,500 - 25 Dispensers      **\$43.75**

**1131965** ≈125,000 - 50 Dispensers      **\$62.50**

#### CONTROLLED RELEASE - CAPSULES:

**1131971** ≈13,500 - 5 Capsules      **\$18.50**

**1131971** ≈27,000 - 10 Capsules      **\$22.50**

**1131971** ≈67,500 - 25 Capsules      **\$47.25**

**1131972** ≈135,000 - 50 Capsules      **\$67.50**

**1131975** ≈270,000 - 100 Capsules      **\$108.00**

### *Trichogramma minutum*

East of the Rockies; budworms, leafrollers and codling moths.

#### CARDS:

**1129001** ≈10,000 (3 Tabs)      **\$18.50**

**1129003** ≈20,000 (6 Tabs)      **\$20.00**

**1129010** ≈100,000 - 1 Card (30 Tabs)      **\$40.00**

#### BULK EGGS:

**1129050** ≈100,000      **\$32.00**

**1129051** ≈200,000 (2 x 100k)      **\$60.00**

**1129052** ≈500,000 (5 x 100k)      **\$150.00**

**1129055** ≈1,000,000      **\$225.00**

### *Trichogramma platneri*

West of the Rockies, orchards and tall crops.

#### CARDS:

**1130001** ≈10,000 (3 Tabs)      **\$18.50**

**1130003** ≈20,000 (6 Tabs)      **\$20.00**

**1130030** ≈100,000 - 1 Card (30 Tabs)      **\$40.00**

#### BULK EGGS:

**1130050** ≈100,000      **\$32.00**

**1130051** ≈200,000 (2 x 100k)      **\$60.00**

**1130052** ≈500,000 (5 x 100k)      **\$150.00**

**1130055** ≈1,000,000 (10 x 100k)      **\$225.00**

FREE SHIPPING in the contiguous 48 states. Ships Monday - Thursday via 2nd Day. Please allow for a minimum of 24 hours to process orders. Orders received after 8:00 AM on Thursday will ship the following Monday. Upgraded Overnight shipping will incur a \$20 upcharge. DISPENSERS/CAPSULES: May require 1 week lead time. See website for more information.

# NemAttack™ Beads

## Encapsulated Beneficial Nematodes

**NEW!**

**Convenient application for control of common plant pests in the soil developing stage.**

**No Refrigeration Required • No Mixing Required**



Available as *Steinernema feltiae* and *Steinernema carpocapsae*

### Apply To Soil For Control Of Target Pests:

- Borers
- Fungus Gnats
- Thrips
- Caterpillars
- Flea Beetles
- Weevils & More!



Beneficial Nematodes are live, microscopic organisms (non-segmented roundworms) that occur naturally in soil throughout the world. They are parasitic to insect pests that typically have a developing (larval or pupal) stage of life in the soil.

ARBICO Organics is proud to offer a large selection of Beneficial Nematodes to suit any grower's needs.

**See pages 14-15 for more information.**



## How Do Beneficial Nematodes Work?

Beneficial Nematodes are applied to soil where they locate pests, enter through orifices or body walls and infect pests with toxic bacteria. Once inside, it is not the nematode that actually kills the pest, but bacteria inside the nematode.



The bacteria kills pests within 24 to 48 hours. Beneficial Nematodes then feed on bacteria and host insect tissue. Adult stages of Beneficial Nematodes produce hundreds of thousands of new juveniles.

New infective juveniles emerge loaded with "pest killer" bacteria and begin their search for a new host. As long as their is a suitable host, the Beneficial Nematodes will continue to parasitize. Beneficial nematodes can be used around and will not harm mammals, aquatic life, birds, reptiles or amphibians.

## What Are Beneficial Nematodes?

Beneficial Nematodes are live, microscopic organisms (non-segmented roundworms) that occur naturally in soil throughout the world.

They are parasitic to insect pests that typically have a developing (larval or pupal) stage of life in the soil; however, they have been known to also parasitize above ground stages of adults, nymphs and larvae.

## NemAttack Beads Encapsulated Beneficial Nematodes



■ = NemAttack *Steinernema feltiae* (Sf)

● = NemAttack *Steinernema carpocapsae* (Sc)



SINGLE SPECIES		
SKU	Size	Price
■ NemAttack Beads <i>Steinernema feltiae</i>		
5001005	≈5 million	\$36.00
5001010	≈10 million	\$42.95
5001020	≈20 million	\$57.20
5001040	≈40 million	\$86.00
● NemAttack Beads <i>Steinernema carpocapsae</i>		
5002005	≈5 million	\$36.00
5002010	≈10 million	\$42.95
5002020	≈20 million	\$57.20
5002040	≈40 million	\$86.00

Application rates vary based on pest, infestation levels and environment. See online for coverage recommendations, or call **800-827-2847**.

Free shipping in the contiguous 48 United States. 2nd day shipping required for the 5 million - 50 million sizes. Expedited shipping available for an additional fee. The 250 million & 500 million sizes require next day shipping during summer months, 2-day shipping otherwise. Orders ship Monday - Thursday; excluding holidays.

## Apply To Soil For Control Of Target Pests:

- Beetle Grubs
- Flies
- Fungus Gnats
- Rootworms
- Thrips
- Weevils
- Leafminers
- Worms
- And more!

## How Do I Choose the Right Beneficial Nematodes?

Use the Selection Chart on the next page to choose the proper species by pest(s). If you are unsure which nematode to use or your target pest is not listed, please call and one of our bio-control specialists can assist. Remember Beneficial Nematodes control soil-dwelling life stages.

## When & How Often Should Beneficial Nematodes Be Applied?

Use beneficial nematodes whenever larvae or grubs are present. As pest larvae feed on plant roots beneath the soil surface, severe damage can be done before you realize you have a pest dilemma. If adult insects are present, their eggs, nymphs, larvae and pupa will soon be developing.

**FOR TREATMENT:** Apply nematodes every 7-10 days until pest infestation subsides.

**FOR PREVENTION:** Apply at least 2-4 times per year in the spring, summer, fall and winter as needed.

Nematodes should be applied when *soil* temperatures are 42° - 95° F.

## When Will I See Results?

Beneficial Nematodes are considered to be one of the most lethal parasites known to kill plant pests. Depending upon the pest(s) you are treating and the method of application, it can take from 2-30 days for you to see results.

It is important to remember that Beneficial Nematodes disintegrate pests from the inside out. You will not see dead insect bodies as you would with a chemical knockdown. Instead you will notice less of the pest(s) over time.

Like all insects and organisms, some nematodes will survive the winter in a dormant state; however, we recommend re-applying at least 2-4 times on an annual basis to ensure that your pests do not get out of hand again.

## NemaSeek™ *Heterorhabditis bacteriophora* (Hb) Beneficial Nematodes

NemaSeek *H. bacteriophora* actively seek out larval pests and is most effective against sedentary pests, such as queen ants, asparagus beetles, bagworms, banana moths, banana weevils, berry root weevils, bill bugs, borers, carrot weevils, chafers, fleas, grubs and more!



## NemaSeek™ *Heterorhabditis indica* (Hi) Beneficial Nematodes

NemaSeek *H. indica* actively seek out larval pests and has been shown to be effective against small hive beetle, fungus gnats, root weevil, western flower thrips and select grubs.



## NemAttack™ *Steinernema feltiae* (Sf) Beneficial Nematodes

NemAttack *S. feltiae* nematodes are known to wait for passing pests, such as cabbage maggot, humpbacked flies, onion maggots, pill worm, raspberry crown borer, root maggots, scarids, shore flies, thrips and more!



## NemAttack™ *Steinernema riobrave* (Sr) Beneficial Nematodes

These nematodes are known to wait for passing pests. NemAttack *S. riobrave* is most effective against grubs of various beetles, citrus weevil and other weevil grubs, small hive beetle and more.



## NemAttack™ *Steinernema carpocapsae* (Sc) Beneficial Nematodes

These nematodes are known to wait for passing pests. NemAttack *S. carpocapsae* is most effective against mobile pests such as fleas, cutworm, fly larvae, termites and more!



## NemaSeek™ *Steinernema kraussei* (Sk) Beneficial Nematodes

NemaSeek actively seek out larval pests in the soil. *S. kraussei* has been shown to be effective at cooler soil temperatures (37-86°F) against the developing stage of weevils (especially black vine weevils) and sawflies.



### NEMATODE SELECTION CHART – Choose Variety By Pest

Pest	Variety	Pest	Variety	Pest	Variety	Pest	Variety
Ants (Queen)	▲	Colorado Potato Beetle	▲	Greater Wax Moth	★	Root Weevils	▲ ●
Armyworm	● ★	Corn Earworm	● ■ ★	Grubs	▲ ●	Scarabs	▲
Artichoke Plume Moth	●	Corn Rootworm	▲	Humpbacked Flies	■	Scarids	■
Asparagus Beetle	▲	Cotton Bollworm	●	Indian Meal Moth	★	Shore Flies	■
Bagworm	▲	Cranberry Girdler	●	Iris Borer	▲	Small Hive Beetle	★ ●
Banana Moth	▲	Cranberry Root Weevil	▲	Japanese Beetle	▲ ★	Sod Webworm	●
Banana Weevil	▲	Crane Flies	■	Large Pine Weevil	●	Strawberry Root Weevil	● ■ ★
Beet Armyworm	● ■	Cucumber Beetle	● ■ ▲	Leafminers	● ■	Sugarcane Stalk Borer	▲
Berry Root Weevil	▲	Cutworm	●	May/June Beetles	▲ ★	Sweet Potato Weevil	■ ▲
Billbug	▲	Diaprepes Root Weevils	★	Mint Flea Beetle	●	Termites (Subterranean)	■ ★
Black Cutworm	● ■ ★	Fall Armyworm	●	Mint Root Borer	●	Thrips	■
Black Vine Weevil	● ▲ ★ ◆	Flea Beetle	▲	Mole Crickets	● ★	Ticks	■ ▲
Bluegrass Weevil	●	Flea (Larvae, Pupae)	●	Navel Orangeworm	●	Tobacco Budworm	●
Cabbage Maggot	■	Flea (Adult)	▲	Onion Maggot	■	Tobacco Cutworm	■
Carrot Weevils	▲	Fly Larvae	●	Pink Bollworm	★	Vine Borers	▲
Caterpillars	●	Fruit Flies	● ■	Plum Curculio	★	Webworm	●
Chafers (European, masked)	▲ ★	Fungus Gnats	■ ▲ ●	Raspberry Crown Borer	■	Western Flower Thrips	■ ●
Citrus Root Weevil	▲ ★	Gall Midges	▲	Red Flower Beetle	★	Wireworm	●
Codling Moth	● ■	Grape Root Borers	▲	Root Maggots	■	Wood Borers	●



## Beneficial Nematodes

- ▲ = NemaSeek™ *Heterorhabditis bacteriophora* (Hb)
- = NemAttack™ *Steinernema feltiae* (Sf)
- = NemAttack™ *Steinernema carpocapsae* (Sc)

- ★ = NemAttack™ *Steinernema riobrave* (Sr)
- ◆ = NemaSeek™ *Steinernema kraussei* (Sk)
- = NemaSeek™ *Heterorhabditis indica* (Hi)

SINGLE SPECIES		
SKU	Size	Price
▲ NemaSeek <i>Heterorhabditis bacteriophora</i>		
1220300	≈5 million	\$36.00
1220301	≈10 million	\$42.95
1220302	≈50 million	\$72.00
1221703	≈250 million	\$198.00
1221706	≈500 million	\$270.00
■ NemAttack <i>Steinernema feltiae</i>		
1220309	≈5 million	\$36.00
1220310	≈10 million	\$42.95
1220311	≈50 million	\$72.00
1221701	≈250 million	\$198.00
1221704	≈500 million	\$270.00
● NemAttack <i>Steinernema carpocapsae</i>		
1220319	≈5 million	\$36.00
1220320	≈10 million	\$42.95
1220321	≈50 million	\$72.00
1221702	≈250 million	\$198.00
1221705	≈500 million	\$270.00
★ NemAttack <i>Steinernema riobrave</i>		
1220410	≈5 million	\$40.00
◆ NemaSeek <i>Steinernema kraussei</i>		
1220420	≈5 million	\$36.00
1220421	≈10 million	\$42.95
1220422	≈50 million	\$72.00
1220423	≈250 million	\$198.00
1220424	≈500 million	\$270.00
● NemaSeek <i>Heterorhabditis indica</i>		
1220200	≈5 million	\$40.00

COMBO PACKS		
SKU	Size	Price
▲● NemaSeek Hb & NemAttack Sc		
1220331	≈10 mil. per species	\$60.00
1220332	≈50 mil. per species	\$125.00
1221699	≈250 mil. per species	\$340.00
1220335	≈500 mil. per species	\$500.00
▲■ NemaSeek Hb & NemAttack Sf		
1220333	≈10 mil. per species	\$60.00
1220334	≈50 mil. per species	\$125.00
1221700	≈250 mil. per species	\$340.00
1220336	≈500 mil. per species	\$500.00
■● NemAttack Sf & NemAttack Sc		
1220340	≈10 mil. per species	\$60.00
1220341	≈50 mil. per species	\$125.00
1220342	≈250 mil. per species	\$340.00
1220343	≈500 mil. per species	\$500.00

TRIPLE THREAT COMBO		
SKU	Size	Price
▲■● NemaSeek Hb, NemAttack Sf & NemAttack Sc		
1220328	≈5 mil. per species	\$61.00
1220330	≈10 mil. per species	\$80.00
1220329	≈50 mil. per species	\$142.00
1220327	≈250 mil. per species	\$405.00
1220326	≈500 mil. per species	\$700.00

### SIZE & COVERAGE CHART

QUANTITY	COVERAGE
≈5 mil. nematodes	Treats ≈1,600 sq. ft.
≈10 mil. nematodes	Treats ≈3,200 sq. ft.
≈50 mil. nematodes	Treats ≈1 acre
≈250 mil. nematodes	Treats ≈5 acres
≈500 mil. nematodes	Treats ≈10 acres

Application rates vary based on pest, infestation levels and environment. For specific coverage recommendations, please call **800-827-2847**.



- ▲ = NemaSeek™ *Heterorhabditis bacteriophora* (Hb)
- = NemAttack™ *Steinernema feltiae* (Sf)
- = NemAttack™ *Steinernema carpocapsae* (Sc)

## OMRI Listed Beneficial Nematodes



OMRI LISTED SINGLE SPECIES		
SKU	Size	Price
▲ NemaSeek Pro Hb Beneficial Nematodes		
4004010	≈10 million	\$52.00
4004050	≈50 million	\$90.00
4004250	≈250 million	\$250.00
4004500	≈500 million	\$325.00
■ NemAttack Pro Sf Beneficial Nematodes		
4006010	≈10 million	\$52.00
4006050	≈50 million	\$90.00
4006250	≈250 million	\$250.00
4006500	≈500 million	\$325.00

OMRI LISTED SINGLE SPECIES		
SKU	Size	Price
● NemAttack Pro Sc Beneficial Nematodes		
4005010	≈10 million	\$52.00
4005050	≈50 million	\$90.00
4005250	≈250 million	\$250.00
4005500	≈500 million	\$325.00

TRIPLE COMBO		
SKU	Size	Price
▲■● NemaSeek Pro Hb Beneficial Nematodes, NemAttack Pro Sf Beneficial Nematodes & NemAttack Pro Sc Beneficial Nematodes		
4007010	≈10 mil. per species	\$125.00
4007050	≈50 mil. per species	\$225.00
4007250	≈250 mil. per species	\$630.00
4007500	≈500 mil. per species	\$880.00

Free shipping in the contiguous 48 United States. 2nd day shipping required for the 5 million - 50 million sizes. Expedited shipping available for an additional fee. The 250 million & 500 million sizes require next day shipping during summer months, 2-day shipping otherwise. Orders ship Monday - Thursday; excluding holidays.



## ARBICO Organics® Yellow Insect Traps

### Monitoring + Trapping = Effective Pest Control

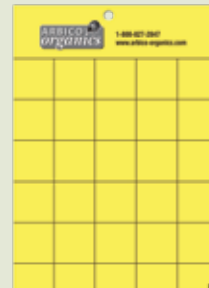
**TARGET:** Use against aphids, bean beetles, california laurel aphids, flea beetles, fungus gnats, greenhouse whiteflies, leafminers, psyllids, shore flies, silverleaf whiteflies, sweet potato whiteflies and more.

**DESCRIPTION:** ARBICO Organics Yellow Insect Traps are 5" x 7" gridded, 2-sided adhesive traps for a wide range of crawling and flying insect pests. Insects are drawn in by the bright color and are caught on the glue. Once they are trapped, the gridded surface makes it easy to count just how many have landed. Having the insects immobilized on the trap also makes it easy to identify them. There is a very low risk to beneficials, but some may become caught by accident.

**SUGGESTED USE:** For use indoors and outdoors to trap and monitor insect pests. Traps may be hung virtually anywhere, placed on the ground or anchored to a stake (not included). If hung, traps should be slightly above the plant canopy. Avoid hanging too close to sprinklers.

- For trapping in the greenhouse or garden, use roughly one trap per 10-25 square feet.
- For monitoring, use roughly 4-6 traps per acre.

1254501	ARBICO Organics Yellow Insect Traps - 5 Pack	\$4.99
1254502	ARBICO Organics Yellow Insect Traps - 10 Pack	\$9.50
1254503	ARBICO Organics Yellow Insect Traps - 25 Pack	\$23.75
1254504	ARBICO Organics Yellow Insect Traps - 50 Pack	\$46.00
1254510	ARBICO Organics Yellow Insect Traps - 100 Pack	\$87.50



## Sticky Traps

### Monitor & Trap For Best Pest Identification!

**DESCRIPTION:** These 4" x 7" traps reverse fold to capture insect pests on both sides and include a twist tie and punched hole for easy hanging. All natural and weatherproof.

#### Aphid/Whitefly Yellow Sticky Traps:

**TARGET:** Whiteflies, aphids, leafhoppers, fungus gnats, spittlebugs, flies and more.

#### Thrips/Leafminer Blue Sticky Traps:

**TARGET:** Thrips, leafminers.

**SUGGESTED USE:** Greenhouses, orchards, row crops, barns and more. Hang or attach to stake approximately every 7 ft. at the end of each row or per tree. Use more for trapping.

1254001	Package of 5 Yellow Traps	\$4.49
1254101	Package of 5 Blue Traps	\$5.50



## Enoz® BioCare® Gnat Stix

### A Low-Tech But Supremely Effective Method For Fungus Gnat Control.

**TARGET:** Fungus gnats, aphids, mites, plant lice & more!

**DESCRIPTION:** Effective for even the worst infestations of fungus gnats. Use one Gnat Stix for each infested plant in adjacent rooms or hallways.

**SUGGESTED USE:** Peel release paper on yellow sticky sheet. Slide stick through the holes in the sticky sheet. Use one sticky strip on each stick. Place in the soil of plants. Avoid leaves coming in contact with sticky paper.

1280501	Gnat Stix - 12 Per Pack	\$5.99
1280502	Gnat Stix - 12 Per Pack - Bundle of 2	\$11.38
1280503	Gnat Stix - 12 Per Pack - Bundle of 4	\$21.56



## Stiky™ Strips Yellow Insect Traps

### These Basic Traps Come With A Handy Wire Hanger.

**TARGET:** Whiteflies, aphids, fungus gnats, leafminers, thrips, and more.

**DESCRIPTION:** This non-gridded yellow sticky trap is versatile enough to use virtually anywhere you are growing. Many insects find this particular yellow hue irresistible and, with glue on both sides, these traps will grab them coming and going. The adhesive is UV resistant, which keeps it from drying out.

**SUGGESTED USE:** For use in homes, gardens, greenhouses, nurseries and fields. Included wire hangers can also be used as plant stakes.

1254301	Stiky Strips Yellow Sticky Traps - 9 Pack	\$5.49
1254302	Stiky Strips Yellow Sticky Traps - (5) 9 Packs	\$25.00
1254303	Stiky Strips Yellow Sticky Traps - (10) 9 Packs	\$45.00



## Yellow Stiky™ Tape

**Longer Length Tape To Cover Even More Area.**

**TARGET:** Whiteflies, aphids, leaf-hoppers, fungus gnats, froghoppers (spittlebugs), flies and more.

**DESCRIPTION:** When you have an insect population in a large area that you need to monitor and trap, this sticky tape is the choice for you. It will work well against aphids, thrips, flies, gnats and many others. Pre-coated with adhesive on both sides, this yellow tape is 530' long and comes in 4 convenient widths (2", 6", 10" & 12"), making it perfect for a variety of locations. You'll also find that the extra thick cardboard flanges and heavy duty plastic plugs make these rolls easy to work with and the product easy to dispense. You can loop these along the perimeter of fields, inside greenhouses, barns, corrals, stalls or any other area where you need insect control. Any unwanted pests or other residue can be removed with vegetable oil or CitraSolv® (available online).

**SUGGESTED USE:** Loop along the perimeter of fields, inside greenhouses, barns, corrals, stalls or any other area where you need insect control.

<b>1259610</b>	Yellow Stiky Tape - 2" wide x 530' long	<b>\$50.00</b>
<b>1259611</b>	Yellow Stiky Tape - 6" wide x 530' long	<b>\$100.00</b>
<b>1259612</b>	Yellow Stiky Tape - 10" wide x 530' long	<b>\$150.00</b>
<b>1259613</b>	Yellow Stiky Tape - 12" wide x 530' long	<b>\$200.00</b>

\*Larger quantities available.



## Blue & Yellow Sticky Ribbon Rolls

**Blue Is For Thrips & Leafminers, Yellow Is For Aphids & Whiteflies.**

**TARGET:** Western Flower Thrips, Bean Thrips, Spinach Leafminers, California Laurel Aphid, Greenhouse Whitefly, Mexican Bean Beetle and more.

**DESCRIPTION:** These sticky ribbon rolls are an effective way to trap and monitor insects in large growing areas. Install around the perimeter of your garden or greenhouse and, since they are double-sided, they will trap insects coming and going. They can also be placed along the ground to catch crawling insects. Blue attracts thrips and leafminers and yellow attracts aphids, whiteflies and other soft-bodied insects. Pheromone lures or essential oils can be added to increase catch potential.

**SUGGESTED USE:** For best results, install the trap at the time of planting as a preventative treatment. Rolls can remain in place until the trapping surface is fully covered with insects or debris. It can be wrapped around fenceposts or stakes that are driven into the ground, or it can be attached to greenhouse posts with staples or string.

<b>1254420</b>	Blue Sticky Ribbon Roll - 6" W x 328' L	<b>\$60.00</b>
<b>1253220</b>	Yellow Sticky Ribbon Roll - 6" W x 328' L	<b>\$60.00</b>
<b>1254422</b>	Sticky Ribbon Roll Bundle - 6" W x 328' L (1 of ea.)	<b>\$115.00</b>



## ARBICO Organics® Blue Insect Traps

**Add Blue To Your Pest Control Arsenal & Cover All Your Bases.**

**TARGET:** Thrips, leafminers.

**DESCRIPTION:** ARBICO Organics Blue Pest Traps are 5" x 7" gridded adhesive traps that are the perfect shade of blue to make them irresistible to Thrips and Leafminers. The color lures them in and the sticky surface holds them tight. These traps have adhesive on both sides to grab insects no matter which direction they're coming from. If you are monitoring, the gridded surface and bright color allow for easy identification and counting. When used in conjunction with the ARBICO Organics Yellow Sticky Traps, you will have the right colors to attract most common insect pests. There is a very low risk to beneficials, but some may become caught by accident.

**SUGGESTED USE:** For use indoors and outdoors to trap and monitor insect pests. Traps may be hung virtually anywhere, placed on the ground or anchored to a stake (not included). If hung, traps should be slightly above the plant canopy. Avoid hanging too close to sprinklers.

- For trapping in the greenhouse or garden, use roughly one trap per 10-25 square feet.
- For monitoring, use roughly 4-6 traps per acre.

<b>1254551</b>	ARBICO Organics Blue Insect Traps - 5 Pack	<b>\$4.99</b>
<b>1254552</b>	ARBICO Organics Blue Insect Traps - 10 Pack	<b>\$8.90</b>
<b>1254553</b>	ARBICO Organics Blue Insect Traps - 25 Pack	<b>\$19.75</b>
<b>1254554</b>	ARBICO Organics Blue Insect Traps - 50 Pack	<b>\$37.50</b>
<b>1254560</b>	ARBICO Organics Blue Insect Traps - 100 Pack	<b>\$70.00</b>



## Pest Wizard Yellow Sticky Traps

**Durable Professional Grade Traps That Come in Two Great Sizes – Large or Mini!**

**TARGET:** Various pests including aphids, thrips, psyllids, flies, midges, hoppers and more.

**DESCRIPTION:** Identify and monitor a broad spectrum of pests with these UV and weather-resistant traps! Using color and a special Messyless Adhesive™ that reacts in a specific way that light, these traps can be used alone or with an added attractant or lure to target pests with a high capture rate.

**SUGGESTED USE:** The Large Yellow Sticky Trap is 5½" x 8" and is ideal for field and orchard crops, harvested foods, trees, shrubs and many other plants grown on a large scale. The Mini Yellow Sticky Trap is 3¾" x 5" and is ideal for sturdiness in wind and can be used easily on tree branches, in greenhouses, on garden stakes, in vegetable rows, on ornamental shrubs and along fence lines and trellis.

<b>1254205</b>	Mini Yellow Traps - 4 pk	<b>\$6.99</b>
<b>1254255</b>	Large Yellow Traps - 4pk	<b>\$9.49</b>



## Caterpillar & Moth Life Cycle & IPM Solutions

**Egg Stage:** Use Moth Egg Parasites/Trichogramma

**Caterpillar Stage:** This most destructive stage has a variety of Biorational Controls including: Btk (*Bacillus thuringiensis kurstaki*), neem oil products, spinosad and pyrethrin products.

**Moth Stage:** Use traps and specific pheromone lures to reduce egg laying and monitor populations.



See online or call to create a caterpillar plan for your garden.

## Monterey B.t.



An Easy-To-Use Solution For Controlling Caterpillars, Loopers & More!

**TARGET:** Cabbage looper, imported cabbage worm, tomato hornworm and bagworm, spring cankerworm, fall cankerworm, spongy moth, tent caterpillar, elm spanworm and fall webworm on trees and ornamentals.

**DESCRIPTION:** This biological insecticide contains *Bacillus thuringiensis* subspecies *kurstaki* strain SA-12 solids, spores and *Lepidopteran* active toxins that when eaten by worms or caterpillars will halt feeding, resulting in death. When used as directed, it will not affect birds, earthworms or beneficial insects such as honeybees and ladybugs.

**SUGGESTED USE:** Apply when infestations are in first stages, making applications every 5-7 days until control is reached. Apply directly to all sides of foliage that is being affected by target pest. Fully mix with water and continue agitation during applications and reapply if heavy rain occurs after application. For fruits and vegetables, mix about 2-3 fl. oz. per gallon of water for about 1,000 sq. ft. For ornamentals and trees, mix about 2 fl. oz. per 3 gallons of water. Now available in no-dilute Ready-To-Use and Ready-To-Spray versions.



<b>1201213</b>	Monterey B.t. - 32 oz. RTU	<b>\$14.49</b>
<b>1201214</b>	Monterey B.t. - 32 oz. Hose-End RTS	<b>\$25.49</b>
<b>1201209</b>	Monterey B.t. Concentrate - 8 oz.	<b>\$13.49</b>
<b>1201210</b>	Monterey B.t. Concentrate - Pint	<b>\$14.99</b>
<b>1201211</b>	Monterey B.t. Concentrate - Quart	<b>\$22.99</b>
<b>1201212</b>	Monterey B.t. Concentrate - Gallon	<b>\$81.99</b>

Cannot be shipped to the following states: SKU 1201213(RTU): AR, ND, WY

## BT NOW®



An Extremely Effective Biopesticide That Controls Crop-Damaging Caterpillars.

**TARGET:** Armyworms, bagworms, borers, budworms, caterpillars, earworms, leafrollers, loopers, Spongy Moth larvae, webworms and more.

**DESCRIPTION:** Uses a strain of *Bacillus thuringiensis kurstaki* to provide broad spectrum control for a long list of *Lepidopteran* pests that feed on a wide variety of plants. Carefully monitor your crops to identify target pest infestations and apply as soon as insects are found or when there are first signs of feeding. Water-based formula, stabilized with UV inhibitors with low resistance potential. Will not harm pollinators or beneficials. 4-hour REI. Compatible with many commonly used fertilizers, pesticides and adjuvants. OMRI listed.



**SUGGESTED USE:** Apply when larvae are small, newly hatched and actively feeding. Do not apply through any irrigation system. Can be used diluted or un-diluted. Dilution with minimal amounts of water will improve coverage. The amount of water needed for a diluted application will depend on crop size, weather, spray equipment and local experience. Please see manufacturer's label for pest and crop specific application rates and guidelines.

<b>1201220</b>	BT NOW - Gallon Concentrate	<b>\$79.99</b>
<b>1201222</b>	BT NOW - 2.5 Gallon Concentrate	<b>\$170.00</b>

Cannot be shipped to the following states: DC

## DiPel® Pro DF & DiPel® DF



OMRI Listed & WSDA Approved *Bacillus thuringiensis v kurstaki* (Btk) To Control Most *Lepidopteran* insects.

**TARGET:** Caterpillars, armyworms, bagworms, budworms, loopers, Spongy Moth larvae, earworms and webworms.

**DESCRIPTION:** This dust-free, flowable powder bioinsecticide works quickly; pests will stop feeding within the hour and die in a few hours to 3 days. Use the smaller-sized DiPel PRO DF for ornamentals and small edibles. The larger-sized DiPel DF is meant for agriculture production. People, beneficials, birds, fish and wildlife are not affected by DiPel.

**SUGGESTED USE:** Can be used indoors and outdoors. Best if used while larvae are actively feeding but before plants are damaged. Small scale applications: Mix 1/2-4 tsp./gal. of water. Or use 1/4-2 lbs./acre. Repeat applications every 3-14 days. Add a spreader-sticker on hard-to-wet crops and to improve spray efficacy in poor weather conditions.



<b>1207005</b>	DiPel Pro DF - 1 lb.	<b>\$22.95</b>
<b>1207006</b>	DiPel DF - 1 lb.	<b>\$24.75</b>
<b>1207004</b>	DiPel DF - 5 lbs.	<b>\$119.50</b>

For biological control of caterpillars see page 11.

## BIOLOGICAL GRUB CONTROL

### NemaSeek™ Hb Beneficial Nematodes

Beneficial Nematodes are one of nature's most powerful weapons available for managing Japanese Beetle infestations. Along with parasitizing the beetles in their larval, underground damaging stages, they also parasitize the larval states of other pest grubs, weevils, fleas, leafminers and more. Apply with a watering can, hose end sprayer or backpack sprayer. **See pages 12-15 for more information.**



## JAPANESE BEETLE CONTROL

### Milky Spore Powder

**Specific, Long Lasting Larval Control.**

**TARGET:** Japanese beetle grubs.

**DESCRIPTION:** Contains *Bacillus popillae* bacterium, lethal to soil-borne grub stages of Japanese beetles. Grubs that normally feed on roots of grass and vegetables will ingest the bacterium, which will cause death in about 1-3 weeks. As grubs decompose they re-release bacteria spores. The spores can remain in the soil for about ten years, and in some cases up to 20 years. In warmer climates, control can occur in 1-3 years (after one application) and in cooler climates, 3-5 years. Can apply with other fertilizers, will not harm animals and can be applied to food crops. For best results, apply with NemaSeek Hb Beneficial Nematodes (see pages 12-15), which will aid in spreading the bacterium to grubs. Store in a cool dry place to maintain shelf life.



**SUGGESTED USE:** Use All-Purpose Dispenser Tube for easy application (see online). White chalk carries the bacterium, and the resultant treated area should resemble a checkerboard. Water within about 48 hours for about 15-20 minutes to permeate into soil and do not mow or rake until thoroughly soaked. Apply about 1 tsp., every 4 ft., in rows 4 ft. apart. 10 oz. covers ≈2,500 sq. ft., 40 oz. covers ≈1/4 acre, 50 lbs. covers ≈4.5 acres.

- |                |   |                 |
|----------------|---|-----------------|
| <b>1216001</b> | Milky Spore Powder - 10 oz. - Covers ≈2,500 sq. ft.   | <b>\$32.99</b>  |
| <b>1216040</b> | Milky Spore Powder - 40 oz. - Covers ≈1/4 acre        | <b>\$85.99</b>  |
| <b>1216045</b> | Milky Spore Powder - 25 lb. Drum - Covers ≈2.25 acres | <b>\$879.00</b> |
| <b>1216052</b> | All-Purpose Dispenser Tube                            | <b>\$14.50</b>  |

Cannot be shipped to the following states: CA, OR, WA

If you are unsure if Japanese Beetles have invaded your county, please contact your County Extension Agent to find out.



## GRUB CONTROL

### BioCeres® WP



This Versatile Biopesticide Can Be Used In A Tank Mix Or As A Stand-Alone.

**1332890** BioCeres WP - 1 lb. Bag **\$90.00**  
See page 23 for more information.

### AzaGuard®



This Product Works On A Wide Range Of Ornamental, Forestry, Food & Non-Food Crops.

**1222204** AzaGuard - 32 oz. **\$275.00**  
See online for more information.

### BotaniGard® MAXX

*Beauveria bassiana* & Pyrethrins Make A Powerful Team!

**1341030** BotaniGard Maxx - Quart **\$115.00**  
See online for more information.

## BEETLE CONTROL

### BONIDE® Captain Jack's™ Neem Max

Powerful Cold Pressed Neem Oil In A 4-in-1 Formulation.

**1246610** Captain Jack's Neem Max - 8 oz. Conc. **\$13.99**  
See online for more information.

### PyGanic® Gardening



Rapid Knockdown & Kill For Outdoor Pests In Your Garden.

**1288710** PyGanic Gardening - 8 oz. **\$35.00**  
See page 22 for more information.

### Molt-X®



An Excellent Spray With Multiple Modes Of Insecticidal Action.

**1332771** Molt-X - Quart **\$350.00**  
See online for more information.

## MULTI-PURPOSE

### Organic JMS Stylet-Oil®



**Smother Pests & Mites and Fight Fungus & Disease Every Season!**

**TARGET:** Powdery mildew, mites, whiteflies, leafminers and insect transmitted diseases.

**DESCRIPTION:** Use this multi-purpose, year-round fungicide, insecticide and antiviral spray oil in greenhouses, on field crops and on fruit trees. Kills powdery mildew on contact and prevents occurrence for up to 14 days and controls mites, whiteflies and leafminers. Made from paraffinic oil and is colorless, tasteless and odorless. 4-hour re-entry interval; no pre-harvest interval.

**SUGGESTED USE:** For gardens, apply approx. 3 Tbsp./gal. water with a sprayer. For larger areas, apply about 1-2 gal./100 gal. water and use 25-150 gal. of dilute/acre depending on crop, timing and desired treatment. Apply weekly or bi-weekly depending on severity of condition. Begin at the onset of plant growth, fungus emergence, disease and insect infestation. See label online for detailed rates and instructions.

- |                |                                      |                |
|----------------|--------------------------------------|----------------|
| <b>1274107</b> | Organic JMS Stylet-Oil - Gallon      | <b>\$38.50</b> |
| <b>1274108</b> | Organic JMS Stylet-Oil - 2.5 Gallons | <b>\$60.00</b> |

\*Call for freight quote. Larger sizes available.

**Cannot be shipped to the following states:** DC, IN, KS, KY, LA, MA, MS, MT, PA, PR, SD, UT, WY



### PureCrop1

**Plant-Based Biostimulant, Insecticide & Fungicide.**

**TARGET:** All sap sucking insects (mites, thrips, aphids, whiteflies, leaf hoppers), mold, mildew and diseases (*Botrytis*, *Fusarium* wilt, powdery mildew and more).

**DESCRIPTION:** PureCrop1 uses advanced biochemistry to eliminate pests, mold and mildew, while increasing plant health. Although it's active ingredients are corn and soybean oil, it is in fact NOT an oil. Through the use of nanotechnology, the oil molecules are rearranged to create a colloidal micelle. Due to its small size and electrical properties, PureCrop1 is a natural surfactant, carrier of nutrients and increases sugar levels. When applied as a foliar spray or root drench, it leaves no residue behind and tests clean parts per billion. This product can be used on all stages of growth even up to day of harvest.

**SUGGESTED USE:** As a preventative foliar spray, 1 oz. per gal. every 7-10 days. For knock down foliar spray, 2 oz. per gal. every 2-3 days until desired results. To maintain long term biostimulant benefits spray, 2 oz. per gal. once a week. As a root drench or general surfactant spray, 1.24 oz. per gallon of water.

- |                |                         |                 |
|----------------|-------------------------|-----------------|
| <b>1274200</b> | PureCrop1 - 16 oz.      | <b>\$35.00</b>  |
| <b>1274201</b> | PureCrop1 - 1/2 Gallon  | <b>\$78.00</b>  |
| <b>1274202</b> | PureCrop1 - Gallon      | <b>\$155.00</b> |
| <b>1274203</b> | PureCrop1 - 2.5 Gallons | <b>\$350.00</b> |

Larger sizes available.

**Shipping Restrictions:** CT, DC, IN, KS, ME, MD, MT, NE, NM, PR, SD, WI



### Organocide® Bee Safe 3-in-1 Garden Spray



**This Multi-Purpose, OMRI Listed Garden Spray Will Not Harm Bees, Ladybugs Or Butterflies.**

**TARGET:** Soft-bodied insects, spiders and other mites, scale, powdery mildew, downy mildew, spot diseases and more.

**DESCRIPTION:** This unique blend of potassium sorbate, sesame oil, lecithin and edible fish oil work as an insecticide, miticide and fungicide. It contains no petroleum solvents. Organocide is effective against soft-bodied insects, spider mites and scale insects, but it also controls many common fungal diseases, like powdery mildew, downy mildew and spot diseases. Can be used on most crops grown indoors and outdoors, but do not use the concentrate indoors. 0-hr REI & 0-day.

**SUGGESTED USE:** Spray to run-off, making sure tops & bottoms are covered. Spray early morning or late evening and allow 3-4 hrs. for product to dry. Do not apply when temps are over 95°F. For control: 1 application. For maintenance: Once a month. Severe problems: 2 applications 3 days apart. Concentrate: Dilute 3 oz/gal water or 1 oz/gal water for severely stressed or damaged plants. Use a sprayer that puts out a fine spray.

- |                |  |                |
|----------------|--|----------------|
| <b>1150050</b> | Organocide 3-in-1 Garden Spray - 24 oz. RTU      | <b>\$12.21</b> |
| <b>1150055</b> | Organocide 3-in-1 Garden Spray - 16 oz. Conc.    | <b>\$16.48</b> |
| <b>1150056</b> | Organocide 3-in-1 Garden Spray - 32 oz. Conc.    | <b>\$23.78</b> |
| <b>1150058</b> | Organocide 3-in-1 Garden Spray - Hose-End 32 oz. | <b>\$31.87</b> |
| <b>1150059</b> | Organocide 3-in-1 Garden Spray - Gallon Conc.    | <b>\$86.19</b> |

**Cannot be shipped to the following states:** CT, IA, MT, NM



### SuffOil-X®



**OMRI Listed Pre-Emulsified Mineral Oil Suffocates Many Soft-Bodied Insects & Controls Certain Fungal Diseases.**

**TARGET:** Aphids, cankerworms, leafhoppers, leafrollers, mealybugs, mites, plant bugs, psyllids, soft scales, webworms, whiteflies, rust and powdery mildew.

**DESCRIPTION:** Made with refined pre-emulsified mineral oil, this suffocant creates the best coverage with limited risk of plant damage. Using a pre-emulsified creates a lighter oil that dries faster, will not cause phytotoxicity, burn or undue stress, leaves no toxic residue on plants and dilutes easily with water.

**SUGGESTED USE:** Can be used with a wide variety of crops indoors or outdoors. Apply when oil will dry and evaporate in 1-2 hours and when relative humidity is less than 90%. Application rates are generally 1-2 gallons of SuffOil-X per 100 gallons of water or 20-500 gallons of spray solution per acre.

- |                |                                     |                 |
|----------------|-------------------------------------|-----------------|
| <b>1332805</b> | SuffOil-X - 2.5 Gallons             | <b>\$90.00</b>  |
| <b>1332806</b> | SuffOil-X - Case of 2 ct./2.5 Gals. | <b>\$162.00</b> |

Larger sizes available.

**Shipping Restrictions:** AK, DC



## BioCeres EC



**An Effective *Beauveria bassiana* Mycoinsecticide - Now Available as a Liquid Concentrate!**

**TARGET:** Various soil-based and foliar feeding plant pests including Aphids, Beetles, Borers, Grasshoppers/Mormon Crickets, Grubs, Leafhoppers, Mealybugs, Plant Bugs, Psyllids, Thrips, Weevils and Whiteflies.

**DESCRIPTION:** This mycoinsecticide is an emulsifiable liquid formulation that can be used on pests in all life stages with no resistance issues. Made from entomopathogenic fungus, *Beauveria bassiana*, it causes death in pests in 5-7 days when the fungus' spores adhere to the pest, cause infection, penetrate the protective barrier of the insect's cuticle, reproduce and ultimately cause death. It is tank mixable with pesticides, fertilizers and adjuvants (do not mix with fungicides) and has a 4-hour REI and Zero-Day PHI. Labeled for indoor and outdoor food crops, orchard crops, greenhouses, nurseries, commercial landscapes, range land, interiorscapes and turf.

**SUGGESTED USE:** Apply at first sign of infestation and repeat applications every 3-7 days. For outdoor ground applications: Apply 16-48 oz./acre in sufficient volume of water (at least 50 gallons total volume) in a mix tank with agitation and use a spreader/sticker adjuvant for increased adhesion. For soil applications: Use 1-4 oz./1,000 sq. ft. and apply with enough water so that at least one gallon of mix is used per 1,000 sq. ft. and irrigate after application. For greenhouse applications: Mix 16-48 oz./100 gallons of water. Use at least 50 gallons of mix per acre, spray to cover plant foliage but avoid runoff. For turfgrasses and landscapes: Use 48-96 oz./acre.

**1332885** Gallon Conc **\$450.00**  
 Cannot be shipped to the following states: HI, PR



## EpiShield



**Delivers a Powerful Punch of Essential Oils with Lower Application Rates!**

**TARGET:** Aphids, Mealybugs, Mites, Spider Mites, Thrips and Whiteflies

**DESCRIPTION:** EpiShield, an advanced miticide and insecticide, offers growers unparalleled convenience. Its concentrated blend of peppermint (15%) and clove (10%) oils ensures high pest mortality rates with minimal application. Versatile for use indoors and outdoors, it effectively suppresses mites, aphids, whiteflies, mealybugs, and thrips across a variety of crops. Lower application rates allows flexibility in timing and is perfect for spot sprays. With no known risks of resistance or residue tolerance, it's an efficient solution in agriculture and commercial settings.

**SUGGESTED USES:** Dilute 9-12 fl oz per 100 gallons per acre for foliar applications. Use immediately and agitate the solution regularly. Spray top and bottom of leaf canopy until wet but without runoff. Repeat applications at 5-7 day intervals as needed. See label for dip application instructions.

**1332775** EpiShield – 36 oz. **\$288.00**  
**1332778** EpiShield – 2.5 Gal **\$2,304.00**



## LALGUARD M52 GR



**A Convenient Granule Bioinsecticide Effective against Black Vine Weevil Larvae, Thrips Pupae, & More!**

**TARGET:** Black Vine Weevil larvae, whiteflies, thrips (including pupae), aphids and ticks in turf.

**DESCRIPTION:** Grown on grains of rice, the fungus *Metarhizium brunneum* strain F52 (formerly known as *Metarhizium anisopliae*) releases spores that effectively control pests with minimal impact on applicators and the environment. These spores will adhere to pests' bodies where they germinate and access the main body cavity through the insect's cuticle. Then they colonize the pest host and cause death in about 3-7 days. This bioinsecticide can be used with beneficials, has no known resistance risks, has a 0-day PHI and is tolerance exempt.

**SUGGESTED USE:** For best results, apply at the early stages of pest development and reapply every 4-6 weeks. Apply prior to planting or mix thoroughly into the top portion of soil where pests will be present before they emerge. Mix thoroughly into the soil or growing media at rate of 1.5-3 lbs./cu. yd. depending on pest and environment. For turf, apply 1-3 lbs./1,000sq. ft. and follow recommendations on the label for suggested layout based on pest type.

**1332999** 22 lbs **\$540.00**  
 Cannot be shipped to the following states: DC, HI



## LALGUARD M52 OD



**A Broad-Spectrum Bioinsecticide That Delivers Comprehensive Control**

**TARGET:** Whiteflies, thrips, mites, aphids and various other greenhouse pests.

**DESCRIPTION:** Formulated with spores derived from the fungus *Metarhizium brunneum* strain F52 (formerly known as *Metarhizium anisopliae*), this bioinsecticide promotes eradication of both foliar and soil pests while minimizing adverse effects on applicators, non-target organisms, and the environment. Upon application, the spores of the active ingredient will adhere to the targeted pest's bodies. These spores will then germinate, penetrate the insect's cuticle, colonize it and ultimately lead to the pest's termination within 3-7 days after application. It can be used with IPM strategies including beneficial insects, has no known resistance risks, is tolerance exempt, has a 0-day PHI, 0-day REI when soil incorporated, and a 4-hour REI when used as a drench, dip or foliar application.

**SUGGESTED USE:** For best results, apply at the early stages of pest development and adjust application frequency dependent on pests' life cycle and application environment. Persistence of the fungal spores will generally be higher when incorporated into soil and with foliar applications in greenhouses versus foliar applications outdoors. Repeat applications at 5-10 day intervals or 2-5 day intervals for high populations of whiteflies. Rates will vary, for most pests and environments use 40-80 fl. oz. / 100 gal as a drench or 8-64 fl. oz. (0.5 pt.-2 qt.) / acre for foliar applications. Apply using a hand-held, ground and/or aerial spray equipment. Contains emulsifiers and mixes readily with water.

**1332998** Liter **\$194.17**  
 Cannot be shipped to the following states: DC, HI, GU



## Garlic Barrier®

### Protect Your Plants With Garlic!

**TARGET:** Ants, aphids, armadillos, armyworms, beetles, birds, caterpillars, deer, grasshoppers, leafhoppers, leafminers, loopers, mealybugs, mites, rabbits, sawflies, whiteflies and wireworms.

**DESCRIPTION:** Made from 10% garlic extract, when absorbed by plants it helps to protect them from pest insects, repelled by the smell and taste. The garlic odor diminishes about 30 minutes and will not alter taste.

**SUGGESTED USE:** Apply weekly. For nematode and grub control, spray seeds before planting. For foliar applications, apply before noon for best results. Mix at a rate of 1 cup/ 10 cups water to cover about 15,000 sq. ft.

<b>1452602</b>	Garlic Barrier - Quart	<b>\$15.95</b>
<b>1452603</b>	Garlic Barrier AG+ - Gallon**	<b>\$73.80</b>

\*\*AG+ is OMRI listed and WSDA Certified. Call for larger sizes.

**Cannot be shipped to the following states:** AK, AL, AR, DC, DE, IA, ID, KS, KY, LA, MS, ND, SC, WA, WV, WY



## NoFly™ WP

### This Aggressive Fungus Controls Soft-Bodied Insects & Hard-To-Kill Livestock Pests.

**TARGET:** Aphids, Bagrada bugs, beetles (including darkling, litter, carrion & hide), fungus gnats, gnats, grasshoppers, leaf hoppers, locust, lygus bugs, mealybugs, mites (including russet, spider & chicken), Mormon crickets, northern fowl mites, plant bugs, psyllids, red poultry mites, thrips, weevils, and whiteflies.

**DESCRIPTION:** This organic wettable powder mycoinsecticide contains spores of the entomopathogenic fungus *Isaria fumosorosea* strain FE 9901. This naturally occurring fungus is a common and aggressive predator of insect pests but is not a plant pathogenic organism and will not adversely affect beneficials (including bees). When the spores come into contact with the insect pest, they will immediately attach themselves to the body. As they grow, they will penetrate the host insect's body and disrupt the normal functions of the insect's internal organs and tissues. It will stop feeding within 24 hours and die in 3-7 days. Effective against all life stages of insect pest.

**SUGGESTED USE:** Can be used as a foliar, soil or hydroponic application. Rates for crops: Foliar: 1/2-2 lb/ acre or 2-8 oz/ 11,000 sq. ft. at a minimum of 0.1% solution. Soil: 14-28 oz/100 gals water at a rate of 1 gal of solution per cu ft of growing media or 6-12 oz/5-10 gals water/yard of soil. Hydroponics: 6-16 oz/100 gals water. Rates for turf: 1/2- 2 lb/ acre or 2-8 oz/11,000 sq. ft. applied at a minimum of 0.1% solution. Rates for poultry houses & livestock barns: 1-3 oz/12 gals water.

<b>1332875</b>	NoFly WP - 8 oz.	<b>\$67.78</b>
<b>1332876</b>	NoFly WP - 2 lbs.	<b>\$225.99</b>
<b>1332877</b>	NoFly WP - 20 lbs.	<b>\$1,100.00</b>

**Cannot be shipped to the following states:** AK, DC



## Monterey Garden Insect Spray

### Insect Pests Don't Stand A Chance With This Spinosad Product!

**TARGET:** Caterpillars, leafminers, thrips, fire ants and other pests as listed on the label.

**DESCRIPTION:** This OMRI listed spray is made with Spinosad and is specially formulated for use in home environments such as gardens, lawns, ornamentals, shrubs, trees and non-commercial greenhouses. The Spinosad in this spray works on insects' nervous systems, causing paralysis and death within 1-2 days. Because the insects are paralyzed, they may remain stuck on the plants and be mistaken for live insects; we recommend you check your plants 2-3 days after spraying to re-evaluate your control. Not for commercial use.

**SUGGESTED USE:** Apply when listed pests are present. Thoroughly spray and drench all plant foliage until wet, taking care to include undersides of leaves. Repeat applications may be made as indicated in the "Use Restrictions" section of the label. **Toxicity:** This product is toxic to bees for 3 hours following treatment. This product is also toxic to aquatic invertebrates such as insects, crustaceans, mollusks and worms.

<b>1257907</b>	Monterey Garden Insect Spray - 32 oz. RTU	<b>\$13.99</b>
<b>1257906</b>	Monterey Garden Insect Spray Conc. - 32 oz. RTS	<b>\$35.99</b>
<b>1257901</b>	Monterey Garden Insect Spray Conc. - 8 oz.	<b>\$15.99</b>
<b>1257900</b>	Monterey Garden Insect Spray Conc. - Pint	<b>\$21.99</b>
<b>1257905</b>	Monterey Garden Insect Spray Conc. - Quart	<b>\$35.99</b>
<b>1257910</b>	Monterey Garden Insect Spray Conc. - Gallon	<b>\$124.49</b>

**Cannot be shipped to the following states:** DC (Concentrate only)



## PyGanic® Gardening

### Rapid Knockdown & Kill For Outdoor Pests In Your Garden.

**TARGET:** Over 100 listed pests, including aphids, beetles, caterpillars, crickets, fruit flies, fungus gnats, mites and thrips.

**DESCRIPTION:** This updated version of PyGanic offers the same ingredients and results as the former PyGanic 1.4. Pyrethrins, the active ingredient here, is made from a daisy extract and has been used effectively for a millennia. This formulation can be applied in a variety of ways, making it easy to use no matter the size of your garden. Spraying should begin when the insects first appear, not when they are already heavily infested. Thoroughly cover all plant surfaces. This OMRI listed, NOP compliant insecticide can be used throughout your growing season and up to the day of harvest.

**SUGGESTED USE:** For use on outdoor gardens and growing areas. Not for use indoors. Not for use on plants grown for sale. Do not exceed the maximum application rates of 1.4 fl. oz. per 1,000 sq. ft. or 59 fl. oz. per acre.

<b>1288710</b>	PyGanic Gardening - 8 oz.	<b>\$35.00</b>
<b>1288730</b>	PyGanic Gardening - Gallon	<b>\$285.00</b>



## OrganiShield™



### Fast Acting Contact Insecticide.

**TARGET:** Adelgids, aphids, armyworms, caterpillars, glassy-winged sharpshooter, lace bugs, leafhoppers, mealybugs, mites, plant bugs, psyllids, soft scales, tent caterpillars, thrips and whiteflies.

**DESCRIPTION:** This is a biochemical insecticide/miticide that offers fast-acting control for a long list of targeted insect pests. The active ingredient in this certified organic product is a molecule called a Sucrose Octanoate Ester (SOE), a natural insect control. Effective within minutes to hours. Primarily a contact insecticide with limited residual activity. Can be used on indoor & outdoor plants. Contains no oils. 0-day PHI and 48-hr REI.



**SUGGESTED USE:** Do not use in any type of irrigation system. Apply as soon as infestation begins and use in sufficient water to achieve adequate coverage of all parts of foliage. Repeat applications as necessary at intervals of 7-10 days. Use a 0.8% to 1.0% v/v solution of this product, depending on the severity of infestation. Use between 25 and 400 gallons of total mix volume per acre.

<b>1332736</b>	OrganiShield - Pint	<b>\$45.00</b>
<b>1332734</b>	OrganiShield - Quart	<b>\$80.00</b>
<b>1332737</b>	OrganiShield - Gallon	<b>\$280.00</b>

Larger sizes available.

**Cannot be shipped to the following states:** AL, AK, AR, CT, DE, DC, GA, ID, IL, IN, IA, KS, KY, LA, ME, MN, MS, MO, MT, NE, NH, NM, NY, ND, OH, PR, RI, SD, TN, TX, UT, VT, WV, WI, WY

## BioCeres® WP



### This Versatile Biopesticide Can Be Used In A Tank Mix Or As A Stand-Alone.

**TARGET:** Aphids (*Aphidoidea*), whiteflies (*Aleyrodoidea*), thrips (*Thysanoptera*), plant bugs (*Lygus lineolaris*), spotted wing drosophila (*Drosophila suzukii*), borers, beetles and weevils.

**DESCRIPTION:** This OMRI Listed biopesticide uses the power of *Beauveria bassiana* to control insects in developing and adult stages. Upon application, the spores will adhere to and begin penetrating the insect's outer shell. Once inside the insect, the spores will continue to multiply until they reach its hemolymph (blood). When the spores encounter the blood they will begin feeding on it. Death will occur in 7 to 14 days. 0 pre-harvest interval and 4-hour REI.

**SUGGESTED USE:** Repeat at 5-7 day intervals as needed. Apply 1-3 lbs. per acre, according to the density of the insect population. For conventional air and ground applications, use at least 50 gallons of spray volume per acre. Thoroughly cover plant foliage with spray solution, but not to runoff.

<b>1332890</b>	BioCeres WP - 1 lb. Bag	<b>\$90.00</b>
<b>1332895</b>	BioCeres WP - CA Version - 1 lb. Bag	<b>\$90.00</b>

Case sizes available.

**SKU 1332890 cannot be shipped to the following states:** AK, HI



## *Beauveria bassiana*

*Beauveria bassiana* is an entomopathogenic fungi that causes white muscadine disease in a range of insects including whiteflies, aphids, thrips, grasshoppers and certain types of beetles. *B. bassiana* spores simply need to come in contact with a host. Once the host insect is infected, the fungus rapidly grows inside of the insect, feeding on the nutrients present in the host's body and producing toxins in the process. When the host dies, the *B. bassiana* covers the carcass in a layer of white mold that produces more infective spores.

## BotaniGard® ES & 22WP

### *Beauveria bassiana* Strain GHA

#### Controls A Wide Variety Of Soft-Bodied Insects In Greenhouse, Field & Nursery.

**TARGET:** A wide variety of soft-bodied insects such as whiteflies, thrips, aphids, psyllids, mealybugs, scarab beetles, plant bugs and weevils.

**DESCRIPTION:** BotaniGard is a natural contact insecticide that contains the mycoinsecticide – *Beauveria bassiana* Strain GHA, which controls many varieties of soft-bodied insects in greenhouse, field and nursery crops.

**SUGGESTED USE:** Thorough coverage is required to achieve control. Apply in 7 day intervals. However, if pest population is high, it can be applied in 3-5 day intervals totaling 3 applications.

#### Application Rates of BotaniGard ES

- For whiteflies and aphids, use about .5-1 quart per 100 gallons of water.
- For thrips, use about 1-2 quarts per 100 gallons of water.
- For other insects, use about .5-2 quarts per 100 gallons of water.
- If applying as a high or low volume spray, use up to 3 quarts per 100 gallons of water to cover an area of 5,000-20,000 sq. ft.

#### Application Rates of BotaniGard 22WP

- For whiteflies and aphids, use .5-1 lb. of BotaniGard 22WP per 100 gallons of water.
- For thrips, use 1-2 lbs. of BotaniGard 22WP per 100 gallons of water.
- For other labeled insects, use .5 to 2 lbs. of BotaniGard 22WP per 100 gallons of water.
- Rate depends upon infestation level, consult package instructions before application.

#### BotaniGard ES

<b>1341010</b>	BotaniGard ES - Quart	<b>\$110.00</b>
<b>1341020</b>	BotaniGard ES - Gallon	<b>\$360.00</b>

#### BotaniGard 22WP

<b>1341000</b>	BotaniGard 22WP - 1 lb. Powder	<b>\$95.00</b>
----------------	--------------------------------	----------------

Case sizes available.

**Shipping Restrictions:** Cannot ship via US Mail.





## WHAT ARE FLY ELIMINATORS?

**The Sensible Alternative To Pesticides**  
Fly Eliminators are tiny  $\approx 1/8''$  beneficial insects that parasitize flies in their developing pupal (cocoon) stage, before they can hatch into annoying disease-carrying adult flies. Scientifically they are referred to as Fly Parasites or Fly Parasitoids.

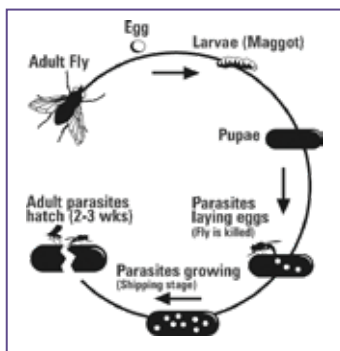


Adult Fly Eliminator emerging from fly pupa.

Fly Eliminators will only parasitize fly pupae and will not bother horses, cattle, livestock, pets, plants, or you.

## HOW DO FLY ELIMINATORS WORK?

Adult female flies lay their eggs in decaying organic matter, especially manure. Only a few hours later, these eggs develop into microscopic larvae (maggot stage) and burrow down into the manure. The maggots grow until they form a pupa (cocoon stage).



Life cycle of the fly parasite.

Then, the female Fly Eliminators seek out the fly pupae and begin to deposit their eggs inside. The eggs grow into larvae that feed on the developing fly, stopping the adult pest fly from hatching.

Fly Eliminators reproduce in about 21 days, constantly strengthening the Fly Eliminator population. Pest flies reproduce at a faster rate than our Fly Eliminators, so we recommend they be replenished on a regular basis, approximately every 2-4 weeks.

### Philadelphia Park Recommends ARBICO's Fly Eliminators

"I was introduced to Fly Eliminators 30 years ago at a Racetrack Symposium and have been using them ever since. They've done a fabulous job and I have recommended Fly Eliminators to many people! They're a great product! Their Fly Eliminators Program was green before green was popular. Without a doubt, this is the way to go. ARBICO Organics is a very good company!"



– Roy Smith, Former Track Manager of Philadelphia Park

## WHO USES FLY ELIMINATORS?

Our customers are all types of horse owners, from the single horse owner to large breeder, including racetracks and farms with many types of animals.

- Boarding Facilities
- Dairy Facilities
- Stables
- Aquariums
- Feed Lots
- Race Tracks
- Poultry
- Kennels
- Equestrian Hobbyists
- Urban Farmers
- Zoos
- Plus more

**Please be sure to account for all of your livestock and other animals. Call for special reduced pricing for large facilities, mixed livestock areas and/or custom programs.**



## HOW DO I USE FLY ELIMINATORS?

Your Fly Eliminators will arrive in a clear plastic bag which contains parasitized fly pupae in wood shavings.

1. When your Fly Eliminators arrive, check for any signs of hatching.
2. Store in a warm, dry place. Once the Fly Eliminators begin to hatch simply disperse them near breeding sites: manure piles; under water troughs; under bedding; corners of pens and feeding sites.
3. Cover with dirt or manure to protect your Fly Eliminators. They will then start to burrow down and search for fly pupae to lay their eggs in.
4. Repeat every 2-4 weeks.



Fly Eliminators and wood shavings in packaging.



## Use Your Fly Eliminators the RIGHT Way:

### RIGHT Time

- ✓ Start your Fly Eliminators Program before or as soon as your infestation starts
- ✓ Release once you have 3 nights in a row of 40°F temperatures
- ✓ If you start late, just add more Fly Eliminators to your order

### RIGHT Place

- ✓ Release at the end of the day – they're nocturnal
- ✓ Release near manure, urine soaked areas, feeding, watering & bedding areas

### RIGHT Amount

- ✓ The more Fly Eliminators, the fewer the flies

### RIGHT Schedule

- ✓ Shipments every 2-4 weeks are best to break the fly lifecycle

## SPECIAL PRICING

**LOCK IN THE LOWEST PRICES FOR 2025 PROGRAMS! Sign Up NOW & Pay LATER!**

**Only \$17.95**  
Per Shipment for 2-5 Horses  
USPS Shipping Included\* in Prices!

Number of Horses/Animals	Suggested Units†	VIP Price Per Shipment
1	1/4 Unit	\$14.95
2 - 5	1/2 Unit	\$17.95
6 - 10	1 Unit	\$27.95
11 - 15	1 1/2 Units	\$37.95
16 - 20	2 Units	\$49.95
21 - 25	2 1/2 Units	\$60.95
26 - 30	3 Units	\$70.95
31 - 35	3 1/2 Units	\$78.95
36 - 40	4 Units	\$85.95
41 - 45	4 1/2 Units	\$93.95
46 - 50	5 Units	\$97.95
51 +	Please Call 1-800-827-2847	

**Order Your Fly Control Program Today!**  
VIP Pricing Valid Through Dec. 31, 2024.

Please be sure to account for all of your livestock and other animals. Call for special reduced pricing for large facilities, mixed livestock areas and/or custom programs.

\*USPS shipping included up to 5 units.

†These are units of measurement, not warranties or guarantees of performance. The total seasonal cost of Fly Eliminators depends on the recommended number of shipments which may be different than what competitors may recommend. We recommend releasing a shipment every 2-4 weeks throughout the fly season, but releases ranging from 1-6 weeks are not uncommon. Customer experiences may vary. The quantity required and frequency of application can differ according to region, size and condition of property or stables, severity of fly problem, neighbors, manure management, number of animals and start date of program. All warranties, express or implied are disclaimed. One unit bag shown. © 2024 Arizona Biological Control, Inc.

### Churchill Downs Chooses ARBICO Organics

"We started using Fly Eliminators back in 1983. We are still using them today. It's a wonderful product and a successful program that everyone should use! All the big corporations are going green and we were one of the first to go green by using Fly Eliminators."

– Butch Lehr, Former Track Manager of Churchill Downs



### Del Mar Thoroughbred Club Relies On ARBICO Organics

"The Del Mar Thoroughbred Club horse racing facility has been using Fly Eliminators from ARBICO since 1985 with great success. Each summer nearly 2,000 horses and hundreds of thousands of race goers converge on this community making fly control a top priority for both the Del Mar Thoroughbred Club and the community that relies so heavily on the agricultural product we promote. We appreciate the years of timely and professional service ARBICO Organics has provided and look forward to many more good years ahead."

– Joe Harper, Chief Executive Officer of Del Mar



## BIOLOGICAL CONTROL

### Mosquito Bits®

**Harness The Power Of Bti For A Clean, Quick Kill.**

**TARGET:** Mosquito and fungus gnat larvae.

**DESCRIPTION:** Mosquito Bits uses the biological larvicide *Bacillus thuringiensis v. israelensis* (Bti) to quickly kill mosquito larvae in a wide range of habitats. When spread uniformly over the surface of water, the Bti will float down into the water where the larvae will consume it and die; usually within 24 hours. Bits are not harmful to people, animals or plants. Repeat after a 7-10 day interval. For Fungus Gnat control: Spread the granules over the soil until the area is covered. Moisture in the soil will dissolve the Bits. Re-apply every 3 weeks.

**SUGGESTED USE:** Sprinkle 1 teaspoon per 25 sq. ft. or 1 tablespoon per 75 sq. ft. (1/2 lb. per 2,178 sq. ft.) over the surface of containerized standing water. This includes bird baths, water troughs, unused swimming pools, old automobile tires, water gardens, rain barrels and more. DO NOT APPLY to finished human drinking water sources.

<b>1211108</b>	Mosquito Bits - 8 oz.	<b>\$10.95</b>
<b>1211136</b>	Mosquito Bits - 30 oz.	<b>\$17.80</b>
<b>1211130</b>	Mosquito Bits - 20 lbs.	<b>\$119.00</b>
<b>1211139</b>	Mosquito Bits & Dunks Combo Kit	<b>\$24.90</b>



### AQUABAC® 200G Granular Bti Mosquito Control



**Use This Bti Larvicide Wherever You Have Mosquitoes Breeding**

**TARGET:** Larval stages of mosquitoes, fungus gnats and black flies.

**DESCRIPTION:** AQUABAC 200G contains *Bacillus thuringiensis var. israelensis* (Bti), a bacteria that specifically targets mosquitoes and black flies in their larval stage, but is harmless to other living things. Once ingested, Bti will work quickly to damage cells and paralyze the larva. In addition, since AQUABAC 200G does not affect larva predators, they will continue their work alongside the Bti.

**SUGGESTED USE:** Can be applied to almost any habitat that supports mosquito or black fly larvae. Do not use directly in water sources for human consumption. Broadcast by hand or hand spreader in small areas or by standard ground or aerial dispersing methods for larger areas. If water is clear, broadcast at 2.4-10 lbs. per acre. If water is brackish, murky, polluted or full of algae, broadcast 10-12 lbs. per acre. Lasts for approximately 2 weeks.

**1211150** AQUABAC Granular Bti - 40 lb. - **Free Shipping\*** **\$187.00**

\*Free Shipping on 40 lb. bag only, in the contiguous 48 states.

Ships via Ground ONLY. Call for pallet pricing.



### TERRO® No Mess Mosquito Larvicide Pouches



**Dissolvable Pouches Make Protecting Your Family from Mosquitoes Easier than Ever!**

**TARGET:** Mosquito Larvae

**DESCRIPTION:** These convenient and dissolvable pouches contain a selective microbial insecticide (*Bacillus sphaericus* and *Bacillus thuringiensis*) that targets and kills mosquito larvae for up to 4 weeks! Pouches can be used in areas of standing water such as fishponds, bird baths, gutters, rain barrels, and more and can be used around people, pets, plants, aquatic life, wildlife and livestock (when used as directed).

**SUGGESTED USE:** One pouch treats 50 sq. ft. of water surface area. Place pouch directly on the water surface, do not need to tear it open. Reapply pouches every 2 months for continuous protection. Keep any unused pouches in original resealable container.

<b>1211258</b>	TERRO Pouches - 10 pk.	<b>\$13.99</b>
----------------	------------------------	----------------



### AQUABAC® fg



**Biocontrol Designed for Fungus Gnat Control Through Chemigation.**

**TARGET:** Larval stages of fungus gnats.

**DESCRIPTION:** *Bacillus thuringiensis var. israelensis* (Bti) Strain BMP 144 is labeled for control of fungus gnat larvae in greenhouses or nurseries growing vegetables, herbs or ornamentals using sprinkler/chemigation systems. Similar to mosquitoes, once Bti is ingested, it works rapidly to damage cells and fatally paralyze the fungus gnat larva. AQUABAC fg will not harm any other form of aquatic life or beneficial insects.

**SUGGESTED USE:** Apply Aquabac fg directly to crops using a specified sprinkler chemigation methods. Additionally treat surrounding floors, tables, benches or other breeding areas. For light infestations, use 8-16 fl. oz. of Aquabac fg/100 gal. of water. For heavy infestations, increase to 32-64 fl. oz. and reapply weekly. Specific application restrictions can be found on the package label.

**1211180** AQUABAC fg - 2.5 Gallons\* **\$210.00**

**1211182** AQUABAC fg - 2.5 Gallons/Case of 2\* **\$400.00**

\*Free Shipping in the contiguous 48 states. Ships via ground ONLY. Call for pallet pricing.



## POULTRY CARE

### The Amazing Doctor Zymes Poultry Guard

**NEW**

**Stop Stressful Poultry Pests & Have Happier, Healthier Birds!**

**TARGET:** Prevents and eliminates mites, ticks, fleas and other harmful insects that commonly affect poultry.

**DESCRIPTION:** Made from citric acid and enzymes that breakdown proteins and organic matter, this spray will disrupt a pest's ability to breathe, eliminating and repelling them! This product will help to relieve pest stressors, enhancing your flock's health and product quality. It is biodegradable, leaves no residues, helps eliminate odors and can be applied at all life stages and up until the harvest!



**SUGGESTED USE:** Can be applied as a spray to coops, infected areas, floors, walls, ceilings and in cracks and crevices or directly to birds as a dip or spray according to directions. It can also be applied in a mister for commercial farms. For preventative control as a spray, apply weekly. For preventative control utilizing other application methods, apply monthly. Always mix with warm at a temperature between 70-90°F. **For control of poultry mites/lice** – Mix at a ratio of 1 oz./31 oz. water or 4 oz./124 oz. of water. **For control of fleas/beetles** – Mix at a ratio of 8 oz./1 gallon of water. **To clean bedding area or cages** – Mix at a ratio of 4-8 oz./1 gallon of water. Remove all bedding and litter and spray entire area including cracks and crevices and replace bedding if severely infested.

<b>1459210</b>	Poultry Guard - Quart Conc.	<b>\$37.26</b>
<b>1459211</b>	Poultry Guard - Gallon Conc.	<b>\$134.40</b>
<b>1459212</b>	Poultry Guard - 2.5 Gallon Conc.	<b>\$323.64</b>
<b>1459213</b>	Poultry Guard - 5 Gallon Conc.	<b>\$613.87</b>



### ARBICO Organics® Solar Fly Trap

**FREE SHIPPING**

**Heavy Duty, Reusable, Portable & Lightweight Fly Trap!**

**TARGET:** Adult flies.

**DESCRIPTION:** This built-to-last, rust-free, heavy duty trap goes anywhere to reduce existing fly populations, fly blooms and migrant flies. Used by gardeners, pet owners, kennels, horse owners, breeding and training facilities, dairies, poultry and swine facilities, feedlots and other places where flies are a problem. Dimensions: 12" diameter x 10.5" tall.

**SUGGESTED USE:** Mix the yeast bait with water and pour into container at the bottom of the trap. Within seconds flies are lured into the trap. They enter into the confinement chamber and dehydrate from exposure to the sun. When it begins to fill up with flies, just empty, hose out and reset with new bait. Comes with one packet of bait, which is enough for approx. 5 weeks. Use 1 trap for 5-10 horses.

<b>1256001</b>	ARBICO Organics Solar Fly Trap - Includes 1 Bait	<b>\$90.00</b>
<b>1256005</b>	ARBICO Organics Solar Fly Trap - Includes 4 Baits	<b>\$108.00</b>
<b>1256002</b>	Replacement Fly Bait	<b>\$9.99</b>
<b>1259990</b>	ARBICO Organics Solar Fly Trap - 2 Pack	<b>\$174.00</b>
<b>1259991</b>	ARBICO Organics Solar Fly Trap - 3 Pack	<b>\$255.00</b>
<b>1259992</b>	ARBICO Organics Solar Fly Trap - 4 Pack	<b>\$332.00</b>

Replacement parts available online.

\*FREE SHIPPING via ground or US Mail ONLY.

## Starbar Traps

**These Budget Friendly Fly Traps Can Give You Months of Fly Control Around Barns and Corrals.**



### Captivator® Pro Fly Trap

<b>1256051</b>	Captivator Fly Trap	<b>\$13.99</b>
<b>1256053</b>	Fly Trap Attractant Refill - 8 ct.	<b>\$13.49</b>

### Fly Terminator® Pro Fly Trap

<b>1256052</b>	Terminator Pro Fly Trap	<b>\$29.99</b>
<b>1256053</b>	Fly Trap Attractant Refill - 8 ct.	<b>\$13.49</b>

### Bite Free™ Stable Fly Trap

<b>1256050</b>	Bite Free Stable Fly Trap	<b>\$16.99</b>
----------------	---------------------------	----------------

### Milk Jugg™ Trap

<b>1256054</b>	Milk Jugg Trap - 2pk	<b>\$16.99</b>
----------------	----------------------	----------------

## Insulated Plant Protector™

**Get An Early Start On Your Growing To Make The Most Of Your Season.**

**DESCRIPTION:** This 18" tall device works like a mini greenhouse and allows you to plant and harvest weeks earlier than you could otherwise. When filled with water and placed around a plant it will collect and store heat from the sun, protect your plant from freezing, and offer shelter from cold winter winds. Requires no special assembly or tool – just a hose or watering can. Can protect down to 16°F. Allows you to plant 6-8 weeks earlier.



**SUGGESTED USE:** Place in a site with maximum exposure to the sun and over the soil with dark mulch or plastic. Fill the cells (there are 18 of them) of the IPP with water and place around your plant. For added stability, create an internal support with plant stakes (tee-pee design allows you to open and close IPP). Top may be sealed close with a rubber band on extra-cold days and left open on warm days. Remove IPP when danger of frost has passed and store away for use the following year.

**1269520** Insulated Plant Protector - 3 Pack **\$17.99**

## Agribon®

**Protect Your Fruits, Vegetables, Row Crops, Trees & Ornamentals With Agribon Row Covers!**

**TARGET:** Large home gardens, truck gardens, market growers and others.

**DESCRIPTION:** Agribon row covers are recognized for quality, durability and affordability. The polypropylene fabric is spun-bonded with double-bonded seams and UV stabilizers. You can expect 1-3 growing seasons from Agribon.



- Prolongs the growing season by protecting from frost, sun, and wind damage.
- Protects from drying conditions and conserves water by reducing evapotranspiration.
- Speeds up germination.
- Protects seeds from birds.
- Protects plants from marauding insects.
- Make sure that Agribon is securely installed to ensure that plants are protected to the limits of the product. Use Agribon with loop hoops for plant protection that will remain in place until you remove it.

## Pop-Up Greenhouse



**Extend Your Growing Season with This Simple, Reusable Greenhouse.**

**DESCRIPTION:** The Pop-Up Greenhouse is a portable outdoor grow tent that extends your growing season into cooler temperatures. Quickly and easily set it up anywhere in your garden to protect sensitive plants from the elements. The included poles and stakes provide a sturdy structure, while the venting window helps regulate heat and humidity. Dimensions are 39" x 39" x 36" with one side including a zippered door for easy access.



**SUGGESTED USE:** Set up the Pop-Up Greenhouse in your yard or garden where you'd like to protect plants from cooler temperatures. Use the provided poles and stakes for structural stability.

**1269530** Pop-Up Greenhouse **\$39.99**

<b>AG-15</b>
Lightweight with 90% light transmission, (.45 oz./square yard). Use for pollination control, heat sensitive crops and insect pests on potatoes, greens, cabbages and radishes. Made of spun bonded polypropylene fabric.
<b>AG-19</b>
Lightweight (0.55 oz. per sq. yd.), protects to 28°F (provides up to 4°F protection), 85% light transmission. Does not require frames or hoops.
<b>AG-30</b>
Lightweight (0.9 oz. per sq. yd.), protects to 26°F to 28°F (provides between 4°F – 6°F protection), allows 70% light transmission. Hoops or frames are recommended.
<b>AG-50</b>
Highest level of protection, weighs in at 1.5 oz. sq. yd., protects to 24°F (provides up to 8°F of protection), allows 50% light transmission. Hoops or frames are recommended.

**For sizes and availability, please call (800) 827-2847 or visit [www.arbico-organics.com](http://www.arbico-organics.com).**

SOIL TESTING



**Luster Leaf® Rapitest® Soil Test Kit**

A Quick Way To Test N-P-K!

1275203	Soil Test Kit for N, P, K, pH	<b>\$18.99</b>
1275204	pH Soil Tester	<b>\$6.99</b>
1275205	10 pH Soil Test Capsules - Green	<b>\$4.79</b>
1275206	10 Nitrogen Soil Test Capsules - Purple	<b>\$4.79</b>
1275207	10 Phosphorus Soil Test Capsules - Blue	<b>\$4.79</b>
1275208	10 Potash Soil Test Capsules - Orange	<b>\$4.79</b>
1275210	Combo Pack of Soil Test Capsules (10)	<b>\$16.99</b>

**Luster Leaf® Rapitest® Digital Soil pH Meter**

Supplies Quick & Clear Soil pH Readings.

1275222	Rapitest Digital Soil pH Meter	<b>\$15.99</b>
---------	--------------------------------	----------------

**Luster Leaf® Rapitest® Digital Soil Test Kit**

Provides Clear And Definitive Results For pH & NPK In Soil.

1275231	Rapitest Digital Soil Test Kit - 25 pk	<b>\$25.99</b>
---------	--	----------------

**Luster Leaf® Rapitest® Mini Soil 4-in-1 Tester**

Works Quickly To Give You All The Essentials For Healthy Growth.

1275235	Rapitest Mini Soil 4-in-1 Tester	<b>\$12.49</b>
---------	----------------------------------	----------------

**Luster Leaf® Rapitest® Mini Soil pH Tester**

Know Your Soil pH In Minutes!

1275237	Rapitest Mini Soil pH Tester	<b>\$8.99</b>
---------	------------------------------	---------------

**iHort QPlug Propagation Kit**

All You Need To Get Growing In One Package – Just Add Clones, Seedlings Or Transplants.



**DESCRIPTION:** This kit provides an easy and convenient start to your growing, no matter what (or how much) you want to grow. These pre-drilled plugs and trays have been developed to give your plants a strong start in life by encourage robust root growth. They offer flexible aeration, optimum lateral root development, excellent water control, maximum cation rates, insulation and natural buffing, and are sturdy but easy to remove. They are made of a fully biodegradable proprietary mix of coco coir, sphagnum peat moss and coconut shell biochar.

**SUGGESTED USE:** This kit contains 50 QPlugs growing media, size 40/40 (1.25" x 1.25" with a 1/8" hole). A carrier tray and a 50-cell plug tray. A refill pack of 50 plugs is available separately. Simply add the seeds, cuttings, clones or transplants of your choice. Once your plants are too big for the tray, the plugs can be removed and replanted; refill plugs go in easily to replace them.

1430055	iHort 40/40 QPlugs, 50 ct. Propagation Kit	<b>\$21.43</b>
1430054	iHort 40/40 QPlugs - 50 ct. Refill Bag	<b>\$20.69</b>

**Prococo Coco Coir**

This Compressed Coconut Coir Can Be Used in Hundreds Of Ways!



**TARGET:** For use in greenhouses, container plants, nurseries, gardens and landscaping as a replacement for soil and peat moss or as a soil amendment. Can also be used for animal and reptile bedding, playground mulch, in composting, liquid containment and much more.

**DESCRIPTION:** Made from the natural byproducts of coconut cultivation (crushed coconut husks), this premium coco coir product is renewable and sustainable. In addition to being earth-friendly, coco coir offers many advantages: it is free of bacteria and fungal spores, improves soil by slowly adding organic matter, has a low salt content and contains very little dust. It is also easy to hydrate and is resistant to mold and mildew.

Prococo is available in 3 different variations depending on your needs. Prococo Compressed **CocoPeat Block** is finely-ground coir and an excellent moisture-holder. Prococo Compressed **Chips-N-Fiber Block** contains a mixture of rolled and finely chopped husks. Prococo Compressed **CocoChip Block** is made from coarsely chopped husks allowing for excellent drainage.

1305580	Prococo Compressed CocoPeat Block - 10 lbs.	<b>\$17.95</b>
1305582	Prococo Compressed Chips-N-Fiber Block - 10 lbs.	<b>\$17.95</b>
1305581	Prococo Compressed CocoChip Block - 10 lbs.	<b>\$17.95</b>

## ARBICO Organics® Compost Plus

**Revitalizes Soil & Speeds Up Decomposition Of Organic Matter.**

**DESCRIPTION:** This premium compost is product of our insectary and is a blend of fermented nitrogenous and carbonaceous material along with beneficial bacteria, insect frass and wood shavings. Use compost as a mulch and soil amendment to improve soil structure, texture, aeration, water-holding capacity and to provide additional nutrition for microorganisms.



**SUGGESTED USE:** For potted plants, use 3-10 tsp. per pot. Otherwise, mix 1 lb./12 sq. ft. of soil. 2 cu. ft. of compost will treat 50 sq. ft. For farms, 2-4 tons will treat 1 acre.

<b>1305601</b>	Compost Plus - 1 lb. Bag	<b>\$8.90</b>
<b>1305602</b>	Compost Plus - 5 lb. Bag	<b>\$11.50</b>
<b>1305610</b>	Compost Plus - 1 Cubic ft. Bag	<b>\$17.00</b>
<b>1305603</b>	Compost Plus - (2) 1 Cubic ft. Bags	<b>\$28.00</b>
<b>1305607*</b>	Compost Plus - 1/2 Ton Pickup Truck Load	<b>CALL</b>

\*Call to arrange pickup. Pickup in Catalina, AZ.

## ARBICO Organics® Red Composting Worm Mix - *Eisenia fetida*, *Eisenia hortensis*, *Perionyx excavatus*

**A Natural Way To Aerate Your Soil & Fertilize Your Garden.**

**DESCRIPTION:** These worms are nature's decomposers and soil aerators. They consume organic matter and turn it into castings full of nitrogen, phosphorus, potash, magnesium and calcium. As they move through the soil, they break it up and introduce beneficial bacteria and oxygen. This stimulates fungal activity and more rapid breakdown of organic matter. Plants love soil that these worms have been in!



**SUGGESTED USE:** Use 2-3 worms/sq. ft. 1,000 worms cover approximately 400 sq. ft.

<b>1308003</b>	ARBICO Organics Earthworms (~1,000)	<b>\$45.00</b>
----------------	-------------------------------------	----------------

Cannot be shipped to the following states: HI, PR, VI, GU, AS, PW

**Subject to seasonal availability.**

## BSFL Nutrient +

**NEW**

**Food Waste Turned Into Plant Strength**

**DESCRIPTION:** Made by Arizona Worm Farm, makers of Black Soldier Fly Frass, this ground-breaking liquid plant nutrient is produced by emulsifying Black Soldier Fly Larvae and frass. The Black Soldier Fly Larvae emulsion (3-3-5) is combined with Black Soldier Fly Frass (3-2-1), pure well water and phosphoric acid (for stabilization) to create a hydrolysate that contains plant nutrients, beneficial microorganisms, chitin, glutamate and enzymes. This product has an added element of sustainability as the Black Soldier Flies are excellent decomposers and are raised on food waste promoting Arizona Worm Farm's circular zero-waste process!



**SUGGESTED USE:** Shake well before using. For gardens: Dilute at a ratio of 4:1 with water and apply to soil. For starts: Dilute at a ratio of 8:1 with water and apply to soil. Trees: Add one cup (undiluted) for each three feet of tree height and water well. Not recommended for use on seeds.

<b>1300425</b>	BSFL Nutrient + - Gallon	<b>\$20.00</b>
----------------	--------------------------	----------------

Cannot be shipped to the following states: State(s)

## ARBICO Organics® Earthworm Castings

**So Good For Your Garden It's Almost Magical!**

**DESCRIPTION:** A sustainable byproduct of vermiculature, these castings have a bounty of benefits for your soil. They provide a slow release of micronutrients and trace minerals, add microbial life, reduce transplant shock, aerate and condition the soil and add chitinase (which helps in disease suppression and root knot nematode control). Can be used indoors and outdoors on anything you grow and can be used with other fertilizers and amendments.



**SUGGESTED USE:** Mix into potting soil at the rate of 3%-5% by volume. Top-dress around pots beds, shrubs, trees or rows at a rate of 1/4" - 1/2" every 2-4 mos. Incorporate into the top several inches of pots or beds prior to planting or mulching. Repeat when transplanting to reduce shock. Apply onto turf and rake in for lush, green grass.

<b>1308200</b>	Earthworm Castings - 1 lb. Bag	<b>\$4.95</b>
<b>1308201</b>	Earthworm Castings - 5 lb. Bag	<b>\$15.20</b>
<b>1308202</b>	Earthworm Castings - 10 lb. Bag	<b>\$25.00</b>
<b>1308203</b>	Earthworm Castings - 25 lb. Bag	<b>\$47.95</b>

## ARBICO Organics® Root Build 240™ Mycorrhizal Fungi



This Potent Mycorrhizal Fungi Has An Incredible 240 Spores/gr To Maximize Root Colonization.

**DESCRIPTION:** New Root Build 240 contains both micronized Endo and Ecto mycorrhiza for a wide range of plant applications. This greater diversity in beneficial fungi meets the needs of a greater variety of plants. When introduced early in the life of a plant, the endo and ecto will increase the roots' ability to absorb water and nutrients. Endomycorrhizae work within and around the roots of most vegetables, grasses, flowers and ornamentals while ectomycorrhizae live only on the outside of roots and focus on conifers. The high spore count in Root Build 240 means there will be maximum colonization of your plants' roots. Endo Spores: 240 spores/gr. Ecto Spores: 1 x 10<sup>6</sup> spores/gr.



**SUGGESTED USE:** Inoculate roots with mycorrhizal spores (1 oz. is ≈3 Tbsp.) For vegetables, grasses, flowers, shrubs, fruit trees and ornamentals.

<b>1135001</b>	ARBICO Organics Root Build 240 - 1 oz.	<b>\$9.00</b>
<b>1135002</b>	ARBICO Organics Root Build 240 - 2 oz.	<b>\$12.50</b>
<b>1135003</b>	ARBICO Organics Root Build 240 - 8 oz.	<b>\$31.50</b>
<b>1135004</b>	ARBICO Organics Root Build 240 - 1 lb.	<b>\$45.00</b>
<b>1135005</b>	ARBICO Organics Root Build 240 - 10 lbs.	<b>\$329.00</b>

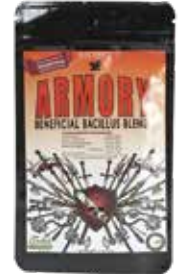
\*Free shipping in the contiguous 48 United States via USPS mail.

## Armory® SP



A Blend Of Beneficial Bacteria That Provides Multiple Plant Promoting Benefits.

**DESCRIPTION:** Each of the four *Bacillus* and *Streptomyces* species in this 100% water soluble organic powder bring their own assets to the table, and in combination with the others they work synergistically to achieve maximum performance in promoting plant health. Also provides a steady food source for the microbes so they can continue to flourish in your soil (or soilless media) throughout the life of your plants. Solubilizes phosphorus and makes iron and manganese more available. Breaks down cellulose and lignin and enhances nutrient cycling. Leaves no residue and is not phytotoxic. Compatible with fungicides, insecticides, fertilizers and biological stimulants **but avoid mixing with** copper sulfate pentahydrate, sulfur and hydrogen peroxide type products.



**SUGGESTED USE:** Residential Use or Reservoir Application: 0.25-1 tsp/gal water. Greenhouse/Nursery: 1-8 oz/100 gals water. Soil Incorporation: 1-2 oz/cu yd soil/media. Outdoor Soil or Foliar: 1-6 oz/acre. In-furrow: 0.5-6 oz/acre. Hydroponics: 1-6 oz/100 gals tank water. Bed, Field or Row Prep: 1-4 oz/acre. Post Fumigation Soil Application: 4-16 oz/acre through irrigation directly to the area fumigated.

<b>1202165</b>	Armory SP - 2 oz.	<b>\$34.99</b>
<b>1202166</b>	Armory SP - 1 lb.	<b>\$165.45</b>

## EM•1® Microbial Inoculant



Faster Breakdown Of Organic Matter.

**DESCRIPTION:** EM-1 is a versatile microbial product that converts organic matter into humus and improves soil structure; it can be used in garden, agricultural, hydroponic and houseplant applications. It works by producing high levels of polysaccharides, beneficial enzymes and organic acids. The resultant amended soil is better able to absorb and retain moisture, as well as cycle nutrients. As it rapidly breaks down organic matter around animals and in compost piles, it lessens odors and will leave fewer breeding areas for flies and other insects.



**SUGGESTED USE:** Can be applied via a hose-end sprayer or other watering device. General application rate is 1 oz (2 Tbsp.) per gal/water. Hydroponics: Add EM-1 as a 3% solution several times a week.

<b>1202098</b>	EM•1 Microbial Inoculant - 16 oz.	<b>\$29.70</b>
<b>1202101</b>	EM•1 Microbial Inoculant - Quart	<b>\$45.00</b>
<b>1202102</b>	EM•1 Microbial Inoculant - Gallon	<b>\$79.70</b>
<b>1202103</b>	EM•1 Microbial Inoculant - 5 Gallons	<b>\$398.50</b>

Call for larger sizes.

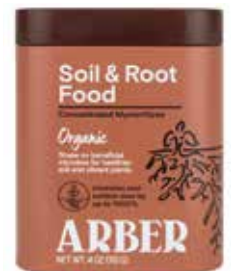
Cannot be shipped to the following states: HI, PR, VI

## Arber® Soil & Root Food



Give Your Rhizosphere The Boost It Needs With A Simple Sprinkle of Beneficial Microbes!

**DESCRIPTION:** This concentrated blend of Mycorrhizae, *Bacillus*, and beneficial soil microbes contains crucial soil components that will promote increased plant growth and yield. It contains Mycorrhizae that form powerful associations with roots to assist plants in accessing nutrients and water and *Bacillus* to further support soil health and to decrease the occurrence of plant diseases and resultant stress.



**SUGGESTED USE:** For best results, apply monthly. Apply at a rate of 1 tbsp/ gallon of soil. For transplants or when repotting, shake near bottom of planting hole and for established plants mix into topsoil and water thoroughly.

<b>1314797</b>	4 oz. Shaker	<b>\$15.99</b>
----------------	--------------	----------------

Shop All Organic Soil Solutions At  
[www.arbico-organics.com](http://www.arbico-organics.com)

## Neptune's Harvest Fish & Seaweed Fertilizer, 2-3-1



The Best Of Both Products For A Complete Fertilization Program.

**TARGET:** All types of plants and crops.

**DESCRIPTION:** Increase yields and improve shelf life of fruits and vegetables. Flowers and foliage will be stronger and more colorful. Great for hydroponics.

<b>1315012</b>	Pint	<b>\$14.99</b>
<b>1315011</b>	Quart	<b>\$22.79</b>
<b>1315013</b>	Gallon	<b>\$54.59</b>
<b>1315014</b>	5 Gallons	<b>\$164.99</b>

Larger sizes available.



## Neptune's Harvest Fish Fertilizer, 2-4-1



Versatile Without Unpleasant Odors!

**TARGET:** Soils requiring rapid nourishment.

**DESCRIPTION:** Nitrogen and other nutrients are chelated, so they are readily available. Unlike fish emulsions, Neptune's Harvest retains the fish proteins and oils and has no unpleasant odor.

<b>1315001</b>	Pint	<b>\$12.49</b>
<b>1315000</b>	Quart	<b>\$18.49</b>
<b>1315002</b>	Gallon	<b>\$45.49</b>
<b>1315003</b>	5 Gallons	<b>\$151.29</b>

Larger sizes available.



## Neptune's Harvest Seaweed Plant Food, 0-0-1



Contains Over 60 Naturally Occurring Nutrients & Amino Acids!

**TARGET:** Plants and crops exposed to stress.

**DESCRIPTION:** Enhances plant development, color and vigor. Increases plant hardiness and resistance to adverse conditions, such as early frost, extreme heat and lack of moisture. Can be used as a seed inoculant, increases and accelerates germination, for rapid development of a healthy root system.

<b>1315008</b>	Pint	<b>\$13.99</b>
<b>1315007</b>	Quart	<b>\$19.49</b>
<b>1315009</b>	Gallon	<b>\$47.49</b>
<b>1315010</b>	5 Gallons	<b>\$174.79</b>

Larger sizes available.



## Solutions from the Sea

In addition to NPK, Seaweed and kelp-based fertilizers are valued for their many vitamins, minerals and enzymes including magnesium, zinc and iron.

They provide broad plant benefits throughout the growing cycle and can act as biostimulants.

Kelp fertilizers are known to reduce the effects of stressors, boost plant recovery and limit nutrient burn as well as increase harvest yields.

Our ocean continues to grow kelp rapidly creating ample and renewable resources that can be converted to extracts, powders or liquids to deliver nutrient dense fertilizers for growers.

## Maxicrop® Soluble Seaweed Powder, 0-0-17



Improves Germination & Helps Prevent Diseases.

**TARGET:** Soils that need additional minerals.

**DESCRIPTION:** Maxicrop provides more than 70 minerals, growth hormones, cytokinins, auxins, vitamins, and enzymes. Improves overall plant vigor and can prevent diseases such as downy and powdery mildews.

**SUGGESTED USE:** 1 tsp/gal water or 2 lbs./acre over the season.

<b>1313001</b>	Maxicrop Soluble Seaweed Powder - 10.7 oz.	<b>\$20.00</b>
<b>1313002</b>	Maxicrop Soluble Seaweed Powder - 27 oz.	<b>\$38.00</b>
<b>1313003</b>	Maxicrop Soluble Seaweed Powder - 5 lbs.	<b>\$75.00</b>
<b>1317202</b>	Maxicrop Soluble Seaweed Powder - 44 lbs.	<b>\$463.20</b>



## Maxicrop® Kelp Meal, 1-0-2



Successful Growers Choice To Correct Deficiencies & Improve Plant Nutrition!

**TARGET:** Deficient soils that need macronutrients.

**DESCRIPTION:** Maxicrop Kelp Meal (1-0-2) is composed of slow-dried, ground seaweed - cleaned, desalted and dust free. This is a rich organic source of over 70 trace minerals (including calcium, magnesium, sulfur, and chlorine) as well as vitamins, amino acids and plant hormones. It is an excellent soil additive that stimulates microbial activity and provides a strong supply of naturally chelated nutrients.

**SUGGESTED USE:** Incorporate into potting soils, seed and transplant beds. Top or side dress gardens and farms. Excellent for hydroponic growing. 1 cup/100 sq. ft.; 55 lbs. treats ~3,000 sq. ft.; 2,200 lbs. treats ~3 acres.

<b>1314801</b>	Maxicrop Kelp Meal - 5 lbs.	<b>\$23.50</b>
<b>1314804</b>	Maxicrop Kelp Meal - 55 lbs.	<b>\$107.00</b>



See online for shipping restrictions and larger sizes.

## AgroThrive™ Fruiting & Flowering Fertilizer, 3-3-5



**Multiple Organic Accreditations For One Exceptional Fertilizer.**

**TARGET:** Gardeners looking for balanced organic nutrition for fruiting and flowering plants.

**DESCRIPTION:** Designed to nurture vegetables, fruit and flower-bearing plants, this premium organic formulation will not only feed your plants the nutrients they crave, it will enhance soil microbial activity by activating indigenous micro-flora in the soil. This healthy soil activity will create a smooth release for, and improved availability of, the nutrients (70% fast release, 30% slow release). You will see faster growth of vibrant blooms and higher yields of flavorful crops in no time. Derived from fish inedibles, grain, and sulfate of potash and sourced from repurposed organic material. OMRI, CDFA, USDA and WSDA listed/certified organic.

**SUGGESTED USE:** Mature Plant Application: Mix ½ cup of product with 1 gallon of water to cover 35 sq. ft. of garden and apply every 2 weeks. Nursery & Foliar Applications: Mix 3 Tbsp of product with 1 gallon of water to cover 150 sq. ft. and apply weekly.

- 1314750** AgroThrive Fruiting & Flowering Fertilizer - 32 oz. **\$20.99**
- 1314752** AgroThrive Fruiting & Flowering Fertilizer - Gallon **\$34.49**
- 1314753** AgroThrive Fruiting & Flowering Fertilizer - 2.5 Gallons **\$62.97**



## AgroThrive™ General Purpose Fertilizer, 3-3-2



**This Easy-To-Use Fertilizer Has Numerous Organic Accreditations.**

**TARGET:** Growers with a variety of plants looking for an organic, liquid bio-fertilizer.

**DESCRIPTION:** This all-in-one solution liquid bio-fertilizer provides balanced organic plant nutrition with the added benefit of enhancing soil microbes. Derived from sustainable sources, including repurposed organic material, AgroThrive General Purpose works to promote faster growth with healthier, stronger plants. OMRI, CDFA, USDA, and WSDA certified.

**SUGGESTED USE:** Mature Plant Application: Mix ½ cup of product with 1 gallon of water to cover 35 sq. ft. of garden. Apply every 2 weeks. Nursery & Foliar Applications: Mix 3 TBSP of product with 1 gallon of water to cover 150 sq. ft. Apply weekly.

- 1314760** AgroThrive General Purpose Fertilizer – 32 oz. **\$19.99**
- 1314762** AgroThrive General Purpose Fertilizer – Gallon **\$34.99**
- 1314763** AgroThrive General Purpose Fertilizer – 2.5 Gallons **\$59.97**



## Arber® Organic All Purpose Fertilizer



**High Quality Nutrients Elevated with Biochar**

**TARGET:** Growers with diverse indoor and outdoor plants looking for more than just fertilizer.

**DESCRIPTION:** Organic All-Purpose Fertilizer is tailored for both outdoor gardens and indoor plants. The proprietary blend of Biochar and fertilizer ensures rapid nutrient release while retaining excess nutrients, providing both fast-acting results and long-term soil enrichment. Enhance year-round soil health and nourish all your plants with this one powerful product for bigger blooms, deeper roots and stronger plant health. NPK: 3-2-1. OMRI Listed and NOP Certified.

**SUGGESTED USE:** New transplants: Apply 2 tbsp per gallon of soil and thoroughly mix. Potted plants: Sprinkle evenly on the soil surface, mix into top layer then water. Raised beds: Use 2.5 cups per 10 sq. ft. of soil, mix into top 3" and water in. Top dress mature trees, shrubs and ornamentals with 6 tbsp of fertilizer. Mix into top 3-6 inches of soil then water thoroughly.

- 1314795** All Purpose Fertilizer – 3 lbs **\$14.99**



## Arber® Organic Fruit & Veggie Fertilizer



**Nutrition for Quality Crops that Positively Impacts the Soil**

**TARGET:** Gardner's looking for vibrant, thriving vegetables all season long.

**DESCRIPTION:** The exclusive blend of Biochar and fertilizer in Organic Fruit & Veggie Fertilizer quickly releases nutrients for increased yield and harvest and allows for sustained plant nourishment over several months. This results in a combination of immediate effectiveness and long-term enhancement of soil health. Enjoy nutritious and bountiful crops through improved soil structure and water capacity, and nutrient preservation. NPK: 4-3-2. OMRI Listed and NOP Certified.

**SUGGESTED USE:** New transplants: Apply 3 tbsp per gallon of soil and thoroughly mix. Potted plants: Sprinkle evenly on the soil surface, mix into top layer then water. Raised beds: Use 2.5 cups per 10 sq. ft. of soil, mix into top 3" and water in. Top dress mature trees, shrubs and ornamentals with 6 tbsp of fertilizer. Mix into top 3-6 inches of soil then water thoroughly.

- 1314796** Fruit & Veggie Fertilizer – 3 lbs **\$14.99**





Down To Earth™ (DTE™) organic fertilizers are ideal for enhancing soil fertility and stimulating plant growth in a sustainable and environmentally friendly way. Organic fertilizers add nutrients to the soil for uptake by plants and for use by the myriad microorganisms that inhabit healthy, productive soil.

## DTE Acid Mix, 4-3-6

One Of The Best Fertilizers That Is Specially Formulated For Acid Loving Plants!

1300200	Down To Earth Acid Mix Mini - 1 lb.	\$5.49
1300201	Down To Earth Acid Mix - 5 lbs.	\$16.49

## DTE All Purpose Mix, 4-6-2

Fertilizer For All Of Your Growing Needs!

1300209	Down To Earth All Purpose Mix Mini - 1 lb.	\$5.49
1300207	Down To Earth All Purpose Mix - 5 lbs.	\$16.49

## DTE Bat Guano, 7-3-1

High-Nitrogen Fertilizer From Bat Guano.

1300006	Down To Earth Bat Guano Mini - 4 oz.	\$5.49
1300007	Down To Earth Bat Guano - 2 lbs.	\$16.99
1300008	Down To Earth Bat Guano - 10 lbs.	\$57.99

## DTE Bio-Fish, 7-7-2

Nitrogen & Phosphorus Rich For Robust Fruit & Blooms.

1300315	Down To Earth Bio-Fish - 5 lbs.	\$17.99
---------	---------------------------------	---------

## DTE Bio-Live, 5-4-2

A Microbe-Rich Fertilizer To Help Build Living Soil!

1300260	Down To Earth Bio-Live - 5 lbs.	\$20.49
1300261	Down To Earth Bio-Live - 25 lbs.	\$74.98
1300262	Down To Earth Bio-Live - 50 lbs.	\$119.99

## DTE Blood Meal, 12-0-0

High In Nitrogen – The Key For Leafy Greens & Healthy Bulbs!

1300300	Down To Earth Blood Meal Mini - 8 oz.	\$5.49
1300304	Down To Earth Blood Meal - 4 lbs.	\$20.99

## DTE Bone Meal, 3-15-0

Help Your Plants Have The Best Chance To Establish Healthy Roots & Flowers!

1300219	Down To Earth Bone Meal - 5 lbs.	\$17.49
---------	----------------------------------	---------

## DTE Citrus Mix, 6-3-3

The Nutrients You Need For Vibrant & Delectable Citrus!

1300295	Down To Earth Citrus Mix - 1 lb.	\$5.49
1300296	Down To Earth Citrus Mix - 5 lbs.	\$17.99

## DTE Crab Meal, 4-3-0

A Versatile Fertilizer That Provides Nutrients, Is An Excellent Compost Amendment & Has Nematicidal Properties!

1300227	Down To Earth Crab Meal - 4 lbs.	\$14.49
---------	----------------------------------	---------

## DTE Fish Bone Meal, 4-12-0

Marine Based Bone Meal For All Of Your Growing Needs.

1300286	Down To Earth Fish Bone Meal Mini - 1 lb.	\$5.49
1300287	Down To Earth Fish Bone Meal - 5 lbs.	\$16.99





SOIL AMENDMENTS



**DTE Kelp Meal, 1-0-1-2**



Down To Earth's Kelp Meal Revitalizes Your Soil & Rejuvenates Your Plants With The Potassium They Need!

- 1300280 Down To Earth Kelp Meal Mini - 8 oz. \$5.49
- 1300282 Down To Earth Kelp Meal - 4 lbs. \$25.99

**DTE Rose & Flower Mix, 4-8-4**



USDA Organic. A Nutrient-Rich Fertilizer That Invigorates Roses, Bulbs & Flowering Plants!

- 1300233 Down To Earth Rose & Flower Mini - 1 lb. \$5.49
- 1300231 Down To Earth Rose & Flower Mix - 5 lbs. \$17.49

**DTE Neem Seed Meal, 6-1-2**



A Long-Release Source of Macro- & Micronutrients.

- 1300267 Down To Earth Neem Seed Meal - 5 lbs \$24.79

**DTE Vegetable Garden, 4-4-4**



Give Your Vegetable Garden A Powerful Nutrient Boost!

- 1300298 Down To Earth Vegetable Garden - 1 lb. \$4.99
- 1300299 Down To Earth Vegetable Garden - 5 lbs. \$14.99
- 1300294 Down To Earth Vegetable Garden - 15 lbs. \$39.99

**DTE Azomite Powder, 0-0-0.2**



The A To Z Of Minerals Including Trace Elements.

- 1309300 Down To Earth Azomite Powder - 1 lb. \$4.79
- 1309301 Down To Earth Azomite Powder - 5 lbs. \$13.99

**DTE Azomite Granulated, 0-0-0.2**



The A To Z Of Minerals Including Trace Elements.

- 1309320 Down To Earth Azomite Granulated - 5 lb. \$14.98

**DTE Granular Humic Acids**



Highly Concentrated & Easy To Use!

- 1300320 Down To Earth Granular Humic Acids - 1 lb. \$4.79
- 1300321 Down To Earth Granular Humic Acids - 5 lbs. \$13.49
- 1300322 Down To Earth Granular Humic Acids - 25 lbs. \$39.99

**DTE Langbeinite, 0-0-22**



Dose Your Soil With This Before Planting – Your Plants Will Love You For It.

- 1300263 Down To Earth Langbeinite - 5 lbs. \$17.49

**DTE Rock Phosphate, 0-3-0**



Dose Your Soil With This Before Planting – Your Plants Will Love You For It.

- 1300269 Down To Earth Rock Phosphate - 5 lbs. \$15.49

See online for shipping restrictions and larger sizes.

## RootShield® Plus Granules & RootShield® Plus WP



**Use This Biological Fungicide To Eliminate Hard To Control Diseases!**

**TARGET:** Plant pathogens and resulting diseases such as *Phytophthora*, *Rhizoctonia*, *Pythium*, *Fusarium*, *Thielaviopsis*, and *Cylindrocladium*.

**DESCRIPTION:** OMRI listed and EPA registered, this product will help eliminate damaging fungal pathogens by colonizing plant root systems and by boosting biological diversity of the rhizosphere. This unique product is comprised of live microbial beneficial fungi *Trichoderma harzianum* strain T-22 and the newly developed *Trichoderma virens* strain G-41, delivering an extended array of pathogen control.



**SUGGESTED USE:** For control and prevention of major fungal pathogens and resultant diseases on greenhouse and nursery vegetables, herbs, ornamentals, fruits, conifer tree seedlings, various trees, legumes, oil seeds and peanuts. One application will last for approximately 12 weeks, and can be used with a 0-hr REI. This product can be used in conjunction with certain other fungicides, see label and other online resources for details.

For granular usage, mix about 1.5-3 lbs. to 1 cu. yd. of mix or about four 40 lb. bags to 100 cu. yds. of soil mix. For WP, use about 6 oz. of powder to 100 gal. of water. For plug trays, flats and small pot with 1-3 in. of soil, use about 100 gal. mix/800 sq. ft. For beds and pots 4-5 in. deep, use about 100 gal. mix/400 sq. ft. For azalea pots 6 in. deep, use about 100 gal. mix/1600 pots.

<b>1332756</b>	RootShield Plus WP - 1 lb. Bag	<b>\$150.00</b>
<b>1332757</b>	RootShield Plus WP - 3 lb. Box	<b>\$310.00</b>
<b>1332755</b>	RootShield Plus Granules - 40 lb. Bag	<b>\$485.00</b>

Larger sizes available.

**Granular cannot be shipped to: AK • WP cannot be shipped to: AK**

## Regalia® CG & Regalia®



**OMRI Listed Control For Both Bacterial & Fungal Diseases.**

**TARGET:** Powdery mildew, downy mildew, white mold, early blight, shot hole, *Fusarium*, bacterial spots and specks, brown rot, *Rhizoctonia* and more.

**DESCRIPTION:** This biofungicide uses a plant (*Reynoutria sachalinensis*) extract to protect crops from certain soil-borne or foliar diseases and to boost production by improving overall plant health. Regalia can be used in multiple application methods on field and edible crops in conventional, sustainable and organic production. Unique FRAC P<sub>3</sub> classification. 4-hour REI.

**SUGGESTED USE:** Use early for disease prevention and overall plant health and through the season for continued disease control. Small Scale Applications: 2 Tbsp./gal. of water. Foliar Applications: Downy Mildew and White Mold: 2-4 qts/acre. Soil Applications: *Fusarium*: 3-4 qts/acre.



<b>1332968</b>	Regalia CG - Quart	<b>\$51.00</b>
<b>1332969</b>	Regalia CG - Gallon	<b>\$120.00</b>
<b>1332970</b>	Regalia - 2.5 Gallons	<b>\$240.00</b>

## Asperello T34 Biocontrol



**Multiple Applications & Modes of Action Makes This Fungicide/Bactericide Especially Effective.**

**TARGET:** *Botrytis*, black stem, blights, *Fusarium*, leaf blotch, root rots, *Phytophthora*, *Pythium*, *Rhizoctonia*, *Sclerotinia* and more.

**DESCRIPTION:** This biological fungicide/bactericide uses the dried spores of the beneficial fungus *Trichoderma asperellum* strain T34 to provide plant protection, boost overall plant growth, and improve plant defenses against plant diseases and abiotic stresses. Meant to be used preventatively. Optimal soil temperature for use is 68-86°F. High spore count for rapid root colonization and faster protection.



**SUGGESTED USE:** Apply at plant propagation and continue to use throughout crop cycle. DO NOT apply to mushrooms. Seeds: 0.1-3.2 oz/cwt seed. Dips: 0.35-0.7 oz/12 gal water. In soil: 0.17-0.35 oz/2-10 gal water and apply to 1 cu. yd. substrate. Drench at propagation (seed trays, multi-pots): 1.8 oz/1,000 sq. ft. Drench at or after transplanting: 0.7 oz/100 gal water. Foliar application: 0.5-2.5 oz/10,000 sq. ft. in 12-25 gal water (ensure full coverage but avoid run off).

<b>1332924</b>	Asperello T34 Biocontrol - 250g	<b>\$144.99</b>
<b>1332925</b>	Asperello T34 Biocontrol - 500g	<b>\$264.99</b>
<b>1332928</b>	Asperello T34 Biocontrol - 250g - CA Label	<b>\$144.99</b>

**Cannot be shipped to the following states: 1332924 & 1332925:** CA, DC, DE, HI, ID, LA, MS, MT, NE, ND, OR, WV, WY

## Actinovate® AG



**Developed For Commercial Ag – Now Available To All Growers.**

**TARGET:** Use to control damping-off, root and stem rot, charcoal rot and wilt caused by many different pathogens. Also controls Downy Mildews and Powdery Mildews.

**DESCRIPTION:** This organic biological fungicide/bactericide uses a microbe (*Streptomyces lydicus* WYEC 108) for the suppression and control of a wide swath of soil-borne and foliar diseases. This *Streptomyces* strain will colonize the root system and foliage of plants, which will not only displace pathogenic fungi present there, it will protect it from further fungal development. Water-soluble, will not clog machinery and doesn't require constant agitation when applying. 4-hr REI.

**SUGGESTED USE:** Use in foliar applications, as a soil drench, in irrigation, chemigation, as a dip, and more. Do not use at temperatures below 45°F. Foliar Spray: Mix with 10-150 gals water/acre (in CA, mix with 20-150 gals water/acre). Apply initial application prior to disease onset or in the early stages of disease development. Crop-specific instructions on label.



<b>1420012</b>	Actinovate AG - 18 oz. Bag	<b>\$145.00</b>
----------------	----------------------------	-----------------

**Cannot be shipped to the following states:** DC, HI, MD, MN, MS, OK, VA, VT

## CEASE® Biological Fungicide



**For Control Of Soil Pathogens That Cause Fungal & Bacterial Plant Diseases.**

**TARGET:** *Alternaria*, Anthracnose, *Botrytis*, *Didymella bryoniae* (gummy stem blight), *Entomospodium*, *Erwinia*, *Fusarium*, powdery mildew, *Pseudomonas*, *Xanthomonas*, *Rhizoctonia*, *Pythium*, *Phytophthora* and more.

**DESCRIPTION:** Cease is an organic contact fungicide/bactericide containing a patented strain of *Bacillus subtilis*. It works by occupying space that the invading pathogens would use and then it disrupts the germination and growth of those pathogens. OMRI listed and NOP compliant. Can be used in combination and/or rotation with other products. 0-day PHI interval and 4-hours REI. No phytotoxicity or residues on flowers or foliage.

**SUGGESTED USE:** Use 2-8 qts/100 gals water about once a week. See label for crop and disease-specific directions. Suitable for wet applications, but use of a spreader/sticker is recommended under those conditions.



<b>1332724</b>	Cease - Gallon	<b>\$115.00</b>
<b>1332727</b>	Cease - 2.5 Gallons	<b>\$235.00</b>
<b>1332725</b>	Cease - Gallon, Case of 4	<b>\$414.00</b>
<b>1332728</b>	Cease - 2.5 Gallons, Case of 2	<b>\$440.00</b>

## Monterey Complete Disease Control



**This Biofungicide/Bactericide Works As A Spray Or As A Drench.**

**TARGET:** Blights, molds, spots, rots and mildews.

**DESCRIPTION:** This organic, broad-spectrum preventative biofungicide/bactericide contains *Bacillus amyloliquefaciens* strain D747. When used as a soil drench, this naturally occurring bacterium goes straight to the plant's roots, where it will establish itself and grow. This colonization prevents the establishment of disease-carrying bacteria and fungi in the soil. Used as a foliar spray, this bacterium will overcome any pathogenic spores present on foliage.

**SUGGESTED USE:** Standard mix rate: 1 tsp. /gal. of water. Foliar spray: Repeat every 7-10 days or as needed. As a soil drench: Drench the roots of transplants with approximately 4 fl. oz. immediately before transplanting. Lawns/Grassy Areas: Apply as a fine spray to the surface area. 2-5 gals/1,000 sq. ft. of lawn.



<b>1458203</b>	Complete Disease Control - 32 oz. RTU	<b>\$16.99</b>
<b>1458204</b>	Complete Disease Control - 32 oz. Hose-End RTS	<b>\$31.49</b>
<b>1458200</b>	Complete Disease Control - 8 oz. Concentrate	<b>\$12.99</b>
<b>1458201</b>	Complete Disease Control - Pint Concentrate	<b>\$18.49</b>
<b>1458202</b>	Complete Disease Control - Gallon Concentrate	<b>\$96.99</b>

SKUs 1458200, 1458201, 1458202 & 1458204 cannot be shipped to the following states: ND

## Mycostop®



**A Versatile & Highly Effective Stand-Alone Biofungicide.**

**TARGET:** *Fusarium*, seed or soil-borne damping off, *Alternaria*, *Phomopsis*, *Botrytis*, *Pythium*, *Phytophthora* and *Rhizoctonia*.

**DESCRIPTION:** This classic biofungicide contains mycelium and spores of *Streptomyces* Strain K61, a naturally occurring bacterium derived from *Sphagnum* peat. This strain controls some of the most destructive of plant pathogens by rapidly colonizing plant roots, displacing the pathogenic fungi there and robbing it of nutrients; disrupting and ultimately breaking down the cell wall of the pathogens and producing metabolites that constrain the pathogens while encouraging plant defense mechanisms and healthy growth. For best results, use preventatively.

**SUGGESTED USE:** Can be applied as a seed treatment, in potting media, as a transplant or cutting dip, soil spray or drench applications or in an irrigation system. In most applications, use in the form of an aqueous solution. A suspension of 0.01% to 0.1% by weight is a basic rate for soil applications. Repeat every 2-6 weeks as needed for diseases control. Use the higher rate and more frequent application for high disease pressure and for larger plants.



<b>1332981</b>	Mycostop - 5 grams	<b>\$50.00</b>
<b>1332982</b>	Mycostop - 25 grams	<b>\$150.00</b>

Cannot be shipped to the following states: AL,AK,DC,HI,GA,IA,LA,NE,ND,SC,SD, TN,VA, WV, WY

## Serenade ASO



**Contains A Powerful Soil Bacterium That Controls Many Common Diseases.**

**TARGET:** *Alternaria*, Anthracnose, Blights, *Botrytis*, Damping-Off, Downy Mildew, *Erwinia*, *Fusarium*, Leaf Spots, *Monilinia*, *Phomopsis*, Powdery Mildew, *Pseudomonas*, *Pythium*, *Rhizoctonia*, *Sclerotinia*, Sooty Blotch, Sour Rot, *Xanthomonas* and more.

**DESCRIPTION:** Designed to be applied preventatively, this OMRI listed biofungicide uses *Bacillus subtilis* QST 713 to control soil and foliar bacterial and fungal diseases. It forms a biofilm around seeds, roots and transplants; kills outright; promotes enhanced photosynthesis and healthy growth that can ward off disease. Can be applied to most common crops. Non-toxic to beneficials. 0-day PHI & 4-hr REI. No resistance risk.

**SUGGESTED USE:** Apply with spray equipment for ground and aerial applications and irrigation systems used for chemigation. Most effective when used preventatively. May be used with other fungicides and pesticides (with restrictions). Rate: 2-6 qts/acre or 1.28-3.8 oz/gal of water. Re-treat in 2-10 day intervals. A surfactant may improve efficacy.

<b>1332910</b>	Serenade ASO – 2.5 gallons	<b>\$140.00</b>
----------------	----------------------------	-----------------





## MULTI-PURPOSE CONTROLS

Maximize your efforts by considering a bio-control to fight both pests and pathogens. See page 20 for more options.

### Debug® Turbo



OMRI Listed. Controls Over 200 Pest Insects, Pest Nematodes And Other Plant Pathogens.

1450500	Quart	\$76.00
1450502	Gallon	\$285.00

### Thyme Guard®



The Highest Percentage Of Thyme Oil Readily Available On The Market Today.

1458300	32 oz. - Concentrate	\$32.97
1458301	Gallon - Concentrate	\$118.33

### Grower's Ally® Crop Defender 3



OMRI Listed. 4 Botanical Oils Plus A Surfactant Make A Killer Combo.

1459315	24 oz. RTU	\$12.99
1459316	8 oz. Concentrate	\$49.55
1459317	32 oz. Concentrate	\$139.99

### Rango™



Three Types Of Control With Time-Proven Neem Oil.

1450570	Quart Concentrate	\$34.95
1450572	Gallon Concentrate	\$89.95

### Sil-Matrix® LC



OMRI Listed Silicon-Based Fungicide/Miticide/Insecticide

1247670	2.5 Gallons	\$99.00
---------	-------------	---------

See website for more information and state registrations.



## MINERAL FUNGICIDES

Consider a mineral-based fungicide option to control diseases through different modes of action. Copper works by damaging fungal spores, while sulfur suffocates fungal pathogens.

### Cueva® Fungicide Concentrate



Kills Fungal & Bacterial Plant Diseases With Good Ole' Copper Soap.

1332920	Cueva Fungicide Concentrate - 2.5 Gallons	\$143.50
---------	---	----------

### BONIDE® Liquid Copper Fungicide

Prevent & Treat Fungal Diseases on a Variety of Plants

1455110	32 oz. - RTU	\$10.99
1455105	16 oz. - Hose-End RTS	\$19.99
1455106	32 oz. - Hose-End RTS	\$36.00
1455101	16 oz. - Concentrate	\$18.88

### Monterey Liquid Copper Fungicide



Ready-to-Use Application of Liquid Copper Fungicide

1455150	32 oz. RTU	\$10.99
---------	------------	---------

### KOCIDE® 3000-O



This Fungicide/Bactericide Uses BioActive Technology Which Allows for Lower Copper Use Rates

1455140	10 lbs.	\$138.50
---------	---------	----------

### BONIDE® Sulfur Plant Fungicide

Suppress Fungal Diseases Before They Cause Damage!

1454701	1 lb. Bottle	\$9.49
1454702	4 lb. Bag	\$17.00

See website for more information and state registrations.



## The Power of Peroxyacetic Acid

Similar in chemical makeup, SaniDate 5.0 and OxiDate 2.0 are two very different products with very different uses.

**SaniDate 5.0** is a no rinse required sanitizer for greenhouse use. Using a peroxy compound, SaniDate can quickly and effectively reduce harmful pathogens. Not only can this product be used on hard surfaces in the greenhouse, it can be used for equipment sanitation, food prep surfaces and also irrigation lines. It can also be used as a post-harvest sanitizer. Mix SaniDate in your dip tank or spray directly onto harvested fruits and vegetables to prevent the pathogens that cause spoilage. SaniDate is a great, environmentally responsible alternative to chlorine.

**OxiDate 2.0** is a pre-harvest bactericide and fungicide. OxiDate can be used in certified organic and conventional agriculture. Not only does OxiDate help prevent plant pathogens, it works as a curative product by killing fungal spores and bacterial inoculum. OxiDate does not have a REI and can be used until harvest. This product can be tank mixed with fungicides and insecticides for extra protection and because of the active ingredient is peroxygen, there is not concern of resistance.

## ZeroTol® HC



Clean Up & Protect Your Plants With One Powerful Product.

**TARGET:** *Alternaria*, Anthracnose, *Aphanomyces*, molds & mildews, bacteria, spots & rots, *Erwinia*, *Phytophthora* (blights, rots), *Plasmopara*, *Pseudomonas*, *Pythium*, *Rhizoctonia*, rust, scab, smut, *Thielaviopsis*, *Xanthomonas*, wilts & blights, fungi, algae and Tobacco Mosaic virus.

**DESCRIPTION:** ZeroTol HC has been designed for use in hemp and cannabis production and for homeowners and hobby growers. Use this OMRI listed product on hard, non-porous surfaces to eliminate pathogens that linger there. It can also be applied to soil and directly to all kinds of plants to prevent/treat/control many common plant diseases and algae growth. Made from Hydrogen Peroxide and Peroxyacetic Acid. No strong odor or toxic residue.

**SUGGESTED USE:** Do not combine or mix with any other pesticide concentrates. Do not reuse solution; make fresh daily. Surfaces/equipment: Dilute at 1:150 or .85 fl oz/gal water. Foliar: Dilute at 1:150 or .85 fl oz/gal water for initial treatment. Apply as needed for control. For prevention: Apply every 5-7 days at 1:200 or 0.64 fl oz/gal water. If disease reappears, apply every 3 days. Turf: Dilute 1.3 fl oz/gal water. 3-10 gals treats approximately 1,000 sq. ft.

- 1222410 ZeroTol HC - Gallon Concentrate **\$42.99**
- 1222412 ZeroTol HC - Gallon Concentrate - Case of 4 **\$154.76**

Cannot be shipped to the following states: DC



## OxiDate® 2.0



Bactericide & Fungicide For Wide Use

**TARGET:** Preventative and curative treatment against plant pathogens and diseases such as *Alternaria*, anthracnose, *Aphanomyces*, bacterial spot, bacterial speck, black spot, *Botrytis* (grey mold), brown spot, downy mildew, *Erwinia*, *Fusarium* (root rot), leaf spot, *Phytophthora*, *Plasmopara*, powdery mildew, *Pseudomonas*, *Pythium*, *Rhizoctonia*, rust, scab, smut and *Thielaviopsis*.

**DESCRIPTION:** OxiDate uses the rapid oxidative property of peroxygen to eliminate bacteria and fungi on contact. Use repeatedly on a variety of crops without cultivating resistance or leaving behind any visible residues or odor. OxiDate may also be used for cleaning surfaces, tools, water filters and equipment. Excellent for use in cleaning greenhouses.

**SUGGESTED USE:** Ensure that a minimum ratio of 1:100 is used.

- 1222501 OxiDate 2.0 - 2.5 Gallons **\$230.00**
- 1222502 OxiDate 2.0 - 5 Gallons **\$340.00**

Larger sizes available. All sales are final. No returns or refunds allowed.

\*Free Shipping in the contiguous 48 states. Ships via Ground ONLY.

Cannot be shipped to the following states: DC



## SaniDate® 5.0



An OMRI Listed Sanitizer/Disinfectant.

**TARGET:** Bacteria including *Salmonella*, *Streptococcus*, *E. coli*, *Pseudomonas*, *Staphylococcus aureus*, *Listeria* and molds, including mildew.

**DESCRIPTION:** Contains hydrogen peroxide and peroxyacetic acid as an alternative to chlorine to sanitize and disinfect post harvest equipment, fruit and vegetables and various hard surfaces. Usage industries include farms, dairies, beverage plants, food processing plants, greenhouses, etc. No dumping or run-off restrictions.

**SUGGESTED USE:** For general disinfection, sanitation of surfaces, food safety programs, irrigation systems and greenhouse use mix about 0.5 fl. oz./1 gal. of water. Solution can be applied various ways depending on desired usage. Applications can be made with mops, sponges, spraying devices, etc.

- 1222515 SaniDate 5.0 - 2.5 Gallons **\$230.00**
- 1222517 SaniDate 5.0 - 5 Gallons **\$300.00**

Larger sizes available. All sales are final. No returns or refunds allowed.

\*Free Shipping in the contiguous 48 states. Ships via Ground ONLY.

Cannot be shipped to the following states: AK, HI, PR

**WARNING Corrosive:** Causes irreversible eye damage and skin burns. May be fatal if inhaled or absorbed through skin. Harmful if swallowed. Do not breathe vapors or spray mist. Do not get in eyes, on skin, or on clothing. Wear goggles, face shield, and rubber gloves when handling. Do not enter an enclosed area without proper respiratory protection. Wash thoroughly with soap and water after handling and before eating, drinking, using tobacco or using the toilet. Remove contaminated clothing and wash before reuse. Strong oxidizing agent. Do not use in concentrated form. Mix only with water in accordance with label instructions. Never bring concentrate in contact with other pesticides, cleaners or oxidative agents.



## WEED BARRIERS

### WeedGuardPlus® - Heavy Weight Rolls

**This Tough Weed Block Will Hold Up Under The Elements!**

**TARGET:** Use for weed suppression.

**DESCRIPTION:** This paper weed block is adaptable to nearly any size growing operation in nearly any environment. 100% biodegradable; no need to remove it. Saves time; just lay it down before planting and save yourself countless hours of weeding, spraying or disposing of materials. Or apply it on top of existing weeds and/or invasive plant roots and smother them out. Saves money; no need to buy expensive herbicides. Improves yields; your plants will have a chance to establish themselves without competing with weeds. Porous yet strong; so plants can be watered by natural rainfall or by other means. Allows air flow. Maintains this porosity through all but the most severe of weather. Can be applied by machine or by hand. These rolls are excellent for textured soils and/or those projects that are meant to be long-term. 54% heavier than the standard rolls and offers 12+ months of weed control.

**SUGGESTED USE:** Put in place before you install transplants or seedlings, or before you sow seeds. Simply prepare the ground, place over the soil, and cover the edges with dirt. Product may be affected by variances in weather or soil conditions.

**1453851** Heavy Weight - Smooth Finish - 36" x 100' **\$37.99**  
**1453852** Heavy Weight - Smooth Finish - 48" x 100' **\$54.99**



### EcoMulch Rolls



**Season-Long Weed Protection With No Clean Up**

**TARGET:** Home gardening, commercial growers, organic growers, nurseries, seasonal landscaping, habitat restoration and more.

**DESCRIPTION:** This is an OMRI listed seasonal-use weed barrier paper that offers superior weed prevention from planting through harvest. Made from 100% natural, biodegradable fibers sourced from corrugated box clippings, this product will decompose slowly over the growing season. At the end of the season till any remaining paper into the soil. Adds texture and organic matter to soil. Porous to allow air, water and nutrients to pass through. Opaque to keep weeds from developing past germination. Creped finish makes it more flexible for easy application and dark color keeps soil warm.

**SUGGESTED USE:** Can be applied by hand, by tractor or by a mechanical mulch layer. Suitable for overhead or drip tape irrigation methods. Do not attempt application on a windy day. Put in place before you sow seeds or install transplants and seedlings. Product may be affected by variances in weather or soil conditions.

**1453858** EcoMulch - 24" x 50' rolls – 2 pk - Creped **\$20.99**  
**1453859** EcoMulch - 36" x 50' rolls – 2 pk - Creped **\$28.99**



### Tip: Treating for Weeds in the Fall

- Weeds draw up nutrients in the fall to prepare for winter; apply weed control now and it will be drawn up too!
- If using a broad-spectrum control, it's easier to avoid non-target plants that go dormant before weeds.
- Weed barriers/pre-emergent controls can also be used as beds and lawns are replanted.
- Weeds indicate soil imbalance; soil testing and amending can assist in controlling weeds all season long!

## PRE-EMERGENT

### Gluten-8

**A Liquid Pre-Emergent Herbicide That Provides Control Of Weeds In Both Turf And Beds.**

**TARGET:** Crabgrass and other broadleaf weeds including dandelions and clover.

**DESCRIPTION:** Formulated from corn gluten meal, this pre-emergent delivers organic proteins into soil that prevent weeds from growing. This liquid formulation can be applied with a sprayer three weeks before or after seeding. Pre-emergents work best before weed germination in late spring.

**SUGGESTED USE:** Mix 32 ounces of concentrate with 1.5-2 gallons of water to treat 1,000 sq. ft., agitate before use, wait 24 hours to irrigate and do not apply if rain is expected.

**1273010** Gluten-8 - Gallon **\$44.95**  
Case sizes available.



### Earth Harvest Gluten-8 Liquid Corn Gluten - Set of 2

**Easy-To-Apply Liquid Weed Control Without The Effort Of Lifting A Heavy Bag Of Corn Gluten Meal.**

**TARGET:** Pre-emergent weed control and mild nitrogen fertilizer.

**DESCRIPTION:** Water-soluble and derived from corn gluten meal, it provides pre-emergent control of annual grasses and broadleaf weeds without the effort of applying the granular corn gluten. This product is packaged in a container that has a hose-end spray head for a reliable application.

**SUGGESTED USE:** A 2 quart set of Gluten-8 represents a 40 pound bag of corn gluten meal and treats approximately 2,000 sq. ft.

**1273015** Gluten-8 Liquid Corn Gluten - Set of 2 - 32 oz. Hose End **\$29.45**



## BROAD SPECTRUM

### Torched Weed Killer

**NEW**

**This Non-Selective Oil-Based Herbicide Digs Deep To Kill The Root.**

**TARGET:** Unwanted grasses and weeds.

**DESCRIPTION:** The combination of Clove Oil, Cornmint Oils and soaps offers effective control of unwanted weeds and grasses. When used as directed, Torched is safe for use our people and pets. This non-selective, post emergent herbicide works best at temperatures over 60°F and generally only takes one application (except for those especially tough weeds). It begins working on contact and does not stop until it has killed down to, and including, the root.

**SUGGESTED USE:** Mix 8-10 oz per gal/water. Apply when weeds are actively growing. Re-treat if it rains within 25 hours of spraying. If needed, reapply to hard-to-kill weeds after 5 days. Protect desirable plants during application by shielding them with cardboard or plastic. If accidentally sprayed, immediately rinse the plants and surrounding area with large amounts of water.

<b>1453890</b>	Torched Weed Killer - Gallon	<b>\$74.00</b>
<b>1453891</b>	Torched Weed Killer - 2.5 Gallons	<b>\$149.00</b>



### Organocide Weed Taliator™ Weed & Grass Killer

**NEW**

**A Powerful Surfactant Creates Systemic Action to Kill to the Root**

**TARGET:** Dandelion, crabgrass, ragweed, purslane, chickweed and more

**DESCRIPTION:** Weed Taliator is a non-selective herbicide that uses the power of essential oils delivered with a unique surfactant to tackle weeds and grasses down to the root. Use Weed Taliator on unwanted weeds or grasses around driveways, walkways, gravel beds, fence lines and more. OMRI Listed and safe to use around homes and gardens when used as directed. Available in Ready to Use and Concentrate sizes.

**SUGGESTED USE:** Apply only to unwanted weeds or grasses and protect any desirable plants. For best results apply after morning dew, in full sun, and when temperatures are above 60°F. Spray Ready to Use product on plants until wet. Mix Concentrate product with 6-20 oz per gallon of water. Shake well before and during application.

<b>1453730</b>	Weed Taliator – 24 oz. RTU	<b>\$13.05</b>
<b>1453731</b>	Weed Taliator – Gallon RTU	<b>\$65.23</b>
<b>1453732</b>	Weed Taliator – 16 oz. Conc	<b>\$15.60</b>
<b>1453733</b>	Weed Taliator – 32 oz. Conc	<b>\$24.67</b>
<b>1453734</b>	Weed Taliator – Gallon Conc	<b>\$87.82</b>

Cannot be shipped to the following states: ID, IA, IN, MT, NM



### Avenger® AG Optima Burndown Herbicide

products available  
**OMRI LISTED**  
For Organic Use

**A Versatile D-Limonene Herbicide That Works Quickly & Thoroughly.**

**TARGET:** Grasses and broadleaf weeds (both annual and perennial).

**DESCRIPTION:** This non-selective weed killer uses d-limonene (a natural citrus oil) as its active ingredient and has been developed for agricultural and non-agricultural uses. This clean-smelling citrusy spray will not translocate or stain brick, concrete or pavement. NOP compliant.

**SUGGESTED USE:** Mix in water and apply to all sides of foliage until weeds are thoroughly wet. Spray when temps are above 50°F. Fill spray tank 1/2 full with clean water, add product while agitating. Apply at a 7-10% mixture, depending on the size of the weeds. Use lower rate for smaller weeds and higher rate for larger, hard-to-kill weeds. Use lower rate whenever possible. Do not exceed 5 gals product/acre per application or a total of 16 gals/acre/year. Be careful to avoid spray drift.

<b>1453740</b>	AG Optima - 32 oz. Concentrate	<b>\$35.00</b>
<b>1453741</b>	AG Optima - Gallon Concentrate	<b>\$110.00</b>
<b>1453713</b>	AG Optima - 2.5 Gallons - Case of 2 (5 Gal.)	<b>\$425.00</b>

Cannot be shipped to the following states: CA



## SELECTIVE

### BONIDE® Captain Jack's™ Lawnweed Brew

**Kills the Weeds – Not Your Lawn.**

**TARGET:** Moss, algae, lichens, liverwort, lawn diseases (dollar spot, rust, snow mold), and common broadleaf weeds such as dandelion, clover, chickweed and thistle.

**DESCRIPTION:** This product offers pre-and post-emergent control using an active ingredient derived from Iron(Fe). Mixes quickly and thoroughly with water and works quickly (within hours) to kill down to the roots. Can be applied in temperatures down to 50°F and is rain-fast in 3 hours. Once the spray has dried, treated areas are safe for people and animals. Do not apply to recently seeded lawns, but lawns can be reseeded 1 day after application. Gives lawns a green-up.

**SUGGESTED USE:** Use with any standard handheld, backpack, compression or knapsack sprayer. Mix 1 part product with 24 parts water (5 fl oz in 1 gal water). Repeat in 3-4 wks for spot control. Pre-emergent control; Apply 5-10 gals of spray solution/1,000 sq ft depending on weed pressure. Reapply 3-6 wks later. Ensure lawn is well watered before application. Do not apply to bentgrass. Do not apply at temps over 85°F. Do not apply if rainfall is expected with 3 hrs of application. Do not apply to the same area more than 4 times a year. To avoid staining, wait until treated area dries before re-entry.

<b>1453754</b>	Captain Jack's Lawnweed Brew - 16 oz. Conc.	<b>\$14.99</b>
<b>1453752</b>	Captain Jack's Lawnweed Brew - 32 oz. Conc.	<b>\$21.99</b>



## ThermX™-70 Natural Wetting Agent



### Overcome Adverse Water Conditions!

**TARGET:** Increases water & fertilizer uptake.

**DESCRIPTION:** This natural wetting agent is derived from yucca and contains 20% saponin extracted from *Yucca schidigera*. Saponin helps plants overcome adverse water conditions and is a great sticker for other sprays. Use ThermX-70 to increase crop's ability to establish in stressed conditions and increase water and fertilizer uptake. Increases permeability in heavy clay soil and reduces salt and alkali problems by improving drainage. Stimulates root growth, extending the area irrigation reaches.



**SUGGESTED USE: Wetting Agent:** ≈1/4 tsp./gal. water, ≈2-3 oz./acre.

**Soil:** ≈1-2 tsp./gal. water, ≈16 oz./acre

- |                |   |                 |
|----------------|---|-----------------|
| <b>1402403</b> | ThermX-70 Natural Wetting Agent - Quart           | <b>\$27.50</b>  |
| <b>1402404</b> | ThermX-70 Natural Wetting Agent - Gallon          | <b>\$94.50</b>  |
| <b>1402405</b> | ThermX-70 Natural Wetting Agent - 5 Gallons       | <b>\$370.00</b> |
| <b>1402406</b> | ThermX-70 Natural Wetting Agent - 55 Gallon Drum* | <b>CALL</b>     |

\*Call for freight quote. Call for larger sizes.

## Boogie Blue Water Filters

A Great Grow Deserves Great Water.



**TARGET:** Chlorine, chloramine, pesticide residue, mercury, heavy metals, dissolved solids, fluoride and other chemicals.

**DESCRIPTION:** Whether you are dealing with additives in municipal water, or worry about what-all is in your well water, Boogie Blue filters can help. They attach quickly and easily to your hose and use catalytic carbon and/or KDF membranes to greatly reduce chemical compounds and organic matter in your water (up to 99% of the chlorine and 87% of the chloramine in municipal waters). Available as Boogie Blue Basic, which will last for 10,000-50,000 gallons of spray volume and Boogie Blue Plus, which will last for 40,000-50,000 gallons.

**SUGGESTED USE:** Attach filter to any standard 3/4" hose. Before initial use, flush filter by running water through it for 1 minute or until water runs clear. When not in use, keep attached to hose or remove and keep closed at both ends. Do not leave filter under constant water pressure. When storing, do not allow filter to dry out; storing in a zip-lock type bag works well.

- |                |                   |                |
|----------------|-------------------|----------------|
| <b>2000600</b> | Boogie Blue Basic | <b>\$29.90</b> |
| <b>2000605</b> | Boogie Blue Plus  | <b>\$59.00</b> |

## Bug Blaster™

This Magic Wand Will Blast Away Destructive Bugs.



**TARGET:** Aphids, whiteflies, mealybugs, spider mites and other soft bodied insects.

**DESCRIPTION:** With this sprayer, you can quickly and effectively wipe out soft bodied insects and/or rid your plants of detritus. It can also impede mildew growth by keeping plant and other surfaces clean. All without using anything but water. The Bug Blaster nozzle creates a forceful 360° flat spray of water while the slender wand lets you insert it into, under and around the center of the plants to hit every plant surface. The spray will be strong enough to fatally traumatize soft bodied insects from eggs to adults, but will not harm the plants. Uses 60% less water than a standard spray gun.

**SUGGESTED USE:** Absolutely **DO NOT** use with any type of pesticide or fertilizer. Simply screw the Bug Blaster nozzle onto watering wand and connect to your garden hose and you are ready to go. Spray infested plants every 3-5 days for 2-3 weeks. Spray plants that are susceptible to powdery mildew, black spot or rust in the morning to give plants a chance to dry out during the day.

- |                |                      |                |
|----------------|----------------------|----------------|
| <b>1452530</b> | 30" Anodized Blaster | <b>\$24.95</b> |
| <b>1452535</b> | Replacement Nozzle   | <b>\$12.99</b> |

## LAWN & GARDEN SPRAYERS



Sprayers can be used to apply Beneficial Nematodes, Foliar Fertilizers, Insecticides & Herbicides.

Shop Online  
[www.arbico-organics.com](http://www.arbico-organics.com)

## GOPHER & MOLE CONTROL

### Root Guard Gopher Wire Baskets

**Stop Gophers From Damaging Plant Roots!**

**TARGET:** Use to protect small planting areas, bulbs, flowers, shrubs, trees, lawns, raised beds, planter boxes, and entire garden areas.

**DESCRIPTION:** Designed to keep the smallest and most pernicious gophers from ruining your garden or lawn. Built from long-lasting 20-gauge, double galvanized metal.

**SUGGESTED USE:** Pull basket sides apart, flatten out bottom fold, bend side seams flat against bottom, round sides and place in a pre-dug hole. There is a 3" green strip indicating how deep to place the basket. Leave green edge exposed to help deter above ground feeding. Place plant in the basket, fill hole with soil, and water as usual. When selecting proper size, choose a basket that is one size larger to allow for plant growth.



<b>1257200</b>	Wire Mini Basket (Pack of 6)	<b>\$9.50</b>
<b>1257201</b>	Wire Basket - 1 Gallon (Pack of 2)	<b>\$9.50</b>
<b>1257202</b>	Wire Basket - 3 Gallon	<b>\$7.75</b>
<b>1257203</b>	Wire Basket - 5 Gallon	<b>\$12.00</b>

## RODENT CONTROL

### BONIDE® Rat Magic™

**Two Different Ways To Get The Same Great Rodent Control.**

**TARGET:** Use to drive away rats, squirrels, chipmunks and other rodents.

**DESCRIPTION:** This combination of cedarwood, castor, clove and peppermint oils is repugnant to rodents and triggers an escape/avoidance response in them. This formula comes in two versions, granules and scent packs. Both are biodegradable and easy to use, simply choose what suits your particular needs the best. Not harmful to plants, people or pets.

**SUGGESTED USE:** Scent Packs: Distribute where rodents hide, feed or congregate. Use 1 pack per average size room and increase as needed until desired affect is achieved. Granules: Barrier/perimeter treatment - Sprinkle to create a band around area to protect. 1 lb. will treat a band 2' W x 100' L. For maintenance, use 1 lb/200 sq. ft. Reapply every 2 weeks or after rains. Indoor Use: Sprinkle where rodents hide, feed or congregate. Vacuum up and reapply every 2 weeks or until infestation is eliminated.



<b>1287720</b>	BONIDE Rat Magic Scent Packs - 8 Count	<b>\$17.49</b>
<b>1287721</b>	BONIDE Rat Magic Granules - 5 lbs.	<b>\$19.99</b>

**Cannot be shipped to the following states:** 1287720: IN, ME, NM, SD  
1287721: IN, MD, NM

## FIRE ANT CONTROL

### Fertilome® Come And Get It II Fire Ant Killer

**Kills The Whole Colony And Its Queen.**

**TARGET:** Red Imported Fire Ants (*Solenopsis invicta*) and Harvester Ants.

**DESCRIPTION:** Fire Ants are notoriously hard to get rid of but even harder to live with. But this spinosad-based bait is very appealing to these insects. So much so, that they will take it back into their mound to share with the rest of the colony – including their queen. Ants start dying in 24-36 hours with mound or colony destruction in 3-14 days. Broadcast applications may take longer.

**SUGGESTED USE:** Apply around the perimeter of homes, ornamental plants, trees and shrubs, and in lawns and gardens. **Mounds:** 4 Tbsp. for each mound. For mounds larger than 15" in diameter, use 6 Tbsp. Sprinkle over and around mound in a 4 ft. diameter circle. **Broadcast:** Use 1/3-2/3 cup/1,000 sq. ft. or 3-6 cups/10,000 sq. ft. or 2 1/2-5 lbs/acre. Use higher rates for heavier infestations, faster activity and greater overall control. Spread with a hand-held or ground-driven rotary spreader. Extremely large mounds may require repeat applications. Use every other month during warm months to keep ants away. For outdoor use only.

**1460020** Fertilome Fire Ant Killer - 1 lb. Bag **\$22.99**  
**Cannot be shipped to the following states:** AK, CA, CO, CT, DE, HI, ID, IL, IN, IA, KY, ME, MD, MA, MI, MN, MT, NV, NH, NM, NY, ND, OH, OR, PA, RI, SD, VT, WA, WV, WI, WY, DC



### Orange Guard® Fire Ant Control



**Control Fire Ant Mounds Without Risking The Health Of Your Family, Pets Or The Environment.**

**TARGET:** Fire ants.

**DESCRIPTION:** Orange Guard Fire Ant Control contains ingredients which are on the FDA GRAS list (generally recognized as safe). Orange Guard Fire Ant Control is water based, so further dilution is easy. It works by dissolving away the waxy coating on the ant's exoskeleton, which clogs their spiracles (how they breathe), and they suffocate.

**SUGGESTED USE:** Puncture the mounds and then saturate them, using 1/2 gallon of either full strength or diluted (3 parts water to 1 part Orange Guard Fire Ant Control). Dilution does not harm grass and covers approx. 8 mounds.

**1460005** Orange Guard Fire Ant Control - Gallon **\$32.75**  
**Cannot be shipped to the following states:** AK, CO, DC, DE, ID, IL, IN, IA, KS, KY, MA, MD, ME, MI, MN, MO, MT, NE, NH, NJ, NY, OH, OR, PA, PR, RI, SD, UT, VT, VA, WA, WI, WV, WY



## Orange Guard® Home Pest Control



**Works Against A Broad Range Of Insects On Contact, Keeps Repelling For Weeks.**

**TARGET:** Crawling pest insects.

**DESCRIPTION:** Orange Guard has proven effective to provide effective control against a broad range of insects including cockroaches, ants, fleas, locusts, weevils, and many other hard to control insects. Orange Guard contains d-Limonene, which is steam distilled orange peel oil. Orange Guard may be used around food, humans and pets and is EPA registered. Smells great too!



**SUGGESTED USE:** For indoor use, spray from 12 inches directly on pest insects. Saturate until visibly wet. Wait 3 minutes, then wipe excess with damp cloth. Apply to pet bedding to repel fleas. Keeps repelling for weeks. For outdoor use, generously spray perimeter of home and anywhere pests can enter to make a barrier of protection.

<b>1460001</b>	Orange Guard Pest Control - 32 oz. RTU Spray Bottle	<b>\$11.49</b>
<b>1460002</b>	Orange Guard Pest Control - 1 Gallon with Sprayer	<b>\$36.49</b>
<b>1460003</b>	Replacement Sprayer for 1 Gallon Orange Guard	<b>\$5.30</b>

## Perma-Guard™ Crawling Insect Control



**An OMRI Listed Diatomaceous Earth Insecticide That Really Does The Job!**

**TARGET:** Any crawling or hopping pest insect.

**DESCRIPTION:** Perma-Guard Crawling Insect Control is Diatomaceous Earth mixed with amorphous silica. D.E. is the crushed fossilized shells of microorganisms; this fine dust clings easily to whatever passes through it. When an insect comes into contact with this dust, it proves fatal. The D.E. absorbs the waxy cuticle around the insect body, which causes it to dehydrate and die in as little as 48 hours. This physical method of killing eliminates the possibility of insects becoming immune to the insecticide, as can be the case with chemical controls. With regular applications of this OMRI listed product, you will receive continued protection.



**SUGGESTED USE:** Apply with a hand duster, power duster or as slurry to areas where insects are found. Avoid introducing into the air. Dust insects directly, if possible.

<b>1218250</b>	Perma-Guard Crawling Insect Control - 2 lb. Bag	<b>\$11.99</b>
<b>1218260</b>	Perma-Guard Crawling Insect Control - 5 lb. Bag	<b>\$18.99</b>

Case sizes available.

**Cannot be shipped to the following states:** AK, CO, HI, LA, ME, MD, MA, MS, NJ, NC, OH, OK, PA, RI, SD, TN, UT, WV, WI, WY

## Essentria™ G Granular Insecticide

**A Granular That Handles A Handful Of Outdoor Pests!**

**TARGET:** Ants, bermudagrass mites, centipedes, chiggers, chinch bugs, clover mites, cockroaches, crickets, earwigs, fall armyworms, fleas, leafhoppers, millipedes, sowbugs/pillbugs, and other insect pests.

**DESCRIPTION:** This quick and long-lasting natural granular insecticide uses essential botanical oils clove, thyme and wintergreen to treat various pests. Easy-to-use outdoors on landscapes, turf, building facilities and around organic operations, sensitive areas such as schools, and in aquatic environments.



**SUGGESTED USE:** Use with a hand spreader. For treatments around buildings, apply uniformly a band about 5-10 ft. wide. For landscapes and turf, use around 3-5 lbs./1000 sq. ft. Water in, applying about 1/8 in. - 1/4 in. of water without puddling. For ant mounds, use about 1-2 tsp./nest. For red imported fire ants, use around 1/2 cup/nest and make a 2 ft. band around nest.

<b>1273050</b>	Essentria G Granular Insecticide - 22 lbs.	<b>\$73.00</b>
----------------	--	----------------

## Essentria® IC Pro

**Handles Most Crawling & Flying Insects Most Anywhere You Find Them.**

**TARGET:** Ants, aphids, American cockroach nymphs, beetles, box elder bugs, crickets, earwigs, face flies, German cockroaches, Indian meal moths, millipedes, mosquitoes, spiders, spider mites, stink bugs and more.

**DESCRIPTION:** Derived from botanical oils, this earth-friendly product will repel and kill a wide variety of insects in all sorts of locations. Formulated for maintenance control as well as active infestations. This water-based formula is made from food-grade inerts, has a light fragrance and is safe for use in food prep areas. For cannabis, hemp and unspecified food crop use. Safe around livestock. FIFRA 25(b) exempt.



**SUGGESTED USE:** Labeled for broadcast, barrier, perimeter, spot treatments and spatial repellent (mosquitoes). General application rate: 1-8 fl oz/gal water (lower rate for maintenance and higher rate for active infestations) and apply at the rate of 2 gals/1,000 sq ft. Do not apply directly to houseplants. Avoid or cover any pools or aquaria prior to spraying.

<b>1273058</b>	Essentria IC Pro – Quart	<b>\$40.99</b>
<b>1273059</b>	Essentria IC Pro – Gallon	<b>\$129.99</b>

INDOOR PEST TRAPS



**Avenger Roach Tablets**

Clean & Easy-to-Use Roach Control.

1219566 6 oz. \$2.69

**Enoz® BioCare® Clothes Moth Traps**

Break The Reproductive Cycle By Luring, Trapping & Killing Adult Male Moths.

1260702 2 Traps \$6.99  
1260703 3 Pack - 2 Traps per Pack \$18.00

**Enoz® BioCare® Flour & Pantry Moth Traps**

Stop Sharing Your Food With Pesky Moths.

1280318 2 Pack \$5.99  
1280319 2 Pack - Bundle of 2 \$10.00

**Enoz® Trap-N-Kill™ Spider & Insect Trap**

Rid Your House Of Crawling, Creeping, Scurrying & Scuttling Pests!

1280222 2 Pack \$2.50  
1280224 2 Pack - Bundle of 5 \$10.00

**Harris® Roach Traps**

This Pesticide-Free Trap Will Be Their Last Step!

1219552 2 Pack \$6.79

**Revenge® Pantry Moth Traps**

This Trap Naturally Attracts & Traps Moths Present Near Food Storage!

1280302 2 Traps/2 Lures \$6.99  
1280303 2 Traps/2 Lures - Bundle of 3 \$19.92

BED BUGS



**Hygea Extra Strength Bed Bug Treatment Spray**

66% Stronger Than Original Hygea.

1219620 24 oz. Ready to Use Spray Bottle \$40.00  
1219621 Gallon Ready to Use \$95.00

**Hygea Extra Strength Bed Bug Laundry Additive**

Use on Any Washable Item Throughout the Home.

1219625 32 oz. Conc. \$45.00

**Harris® Bed Bug Detection Traps**

Cost Effective & Easy-to-Use Monitoring

1240315 4 Pack \$5.99

**JT Eaton™ Kills Bedbugs Powder**

Control Bed Bugs, Fleas & Other Crawling Insects

1219303 7 oz. Puffer Bottle \$6.99

**JT Eaton™ Stick-Em Bed Bug Detector Traps**

Discreet Defense Around Couches & Bedding

1240320 8 Pack \$10.99

# CATALOG INDEX

Actinovate AG .....	36	EpiShield .....	21	Terro No Mess Mosquito Larvacide Pouches.....	26
Active Eye 60X & 100X Microscopes .....	10	Essentria G Granular Insecticide .....	44	The Amazing Doctor Zymes Poultry Guard .....	27
Agribon .....	28	Essentria IC Pro .....	44	ThermX-70 Natural Wetting Agent .....	42
AgroThrive Fruiting & Flowering Fertilizer, 3-3-5 .....	33	Fertilome Come And Get It II Fire Ant Killer .....	43	Thrips & Whitefly Predator - <i>Amblyseius swirskii</i> .....	7
AgroThrive General Purpose Fertilizer, 3-3-2 .....	33	Fly Terminator Pro Fly Trap.....	27	Thrips Predator - <i>Amblyseius cucumeris</i> .....	7
Aphid Parasite - <i>Aphelinus abdominalis</i> .....	4	Fungus Gnat Predator - <i>Stratiolaelaps scimitus</i> .....	6	Thyme Guard.....	38
Aphid Parasite - <i>Aphidius colemani</i> .....	4	Garlic Barrier .....	22	Torched Weed Killer.....	41
Aphid Parasite - <i>Aphidius ervi</i> .....	4	Gluten-8.....	40	WeedGuardPlus Organic - Heavy Weight Rolls .....	40
Aphid Predator - <i>Aphidoletes aphidimyza</i> .....	4	Green Lacewings - <i>Chrysoperla spp.</i> .....	3	Whitefly Parasite - <i>Encarsia formosa</i> .....	5
AQUABAC 200G Granular Bti Mosquito Control .....	26	Grower's Ally Crop Defender .....	38	Whitefly Parasite - <i>Eretmocerus eremicus</i> .....	5
AQUABAC fg .....	26	Harris Bed Bug Detection Traps .....	45	Whitefly Predator - <i>Delphastus catalinae</i> .....	5
Arber Organic All Purpose Fertilizer .....	33	Harris Roach Traps .....	45	Yellow Sticky Tape.....	17
Arber Organic Fruit & Veggie Fertilizer .....	33	Hygea Extra Strength Bed Bug Treatment Spray .....	45	Yellow Sticky Ribbon Rolls.....	17
Arber Soil & Root Food.....	31	Hygea Extra Strength Bed Bug Laundry Additive .....	45	ZeroTol HC.....	39
ARBICO Organics Assassin Bug - <i>Zelus renardii</i> .....	3	iHort QPlug Propagation Kit .....	29		
ARBICO Organics Beneficial Nematodes.....	12-15	Insulated Plant Protector .....	28		
ARBICO Organics Blue Insect Traps .....	17	Luster Leaf Rapitest Digital Soil pH Meter .....	29		
ARBICO Organics Compost Plus .....	30	Luster Leaf Rapitest Digital Soil Test Kit.....	29		
ARBICO Organics Earthworm Castings .....	30	Luster Leaf Rapitest Mini Soil 4-in-1 Tester.....	29		
ARBICO Organics NemAttack Beads.....	13	Luster Leaf Rapitest Mini Soil pH Tester .....	29		
ARBICO Organics Red Composting Worm Mix.....	30	Luster Leaf Rapitest Soil Test Kit.....	29		
ARBICO Organics Fly Eliminators .....	23-24	JT Eaton Kills Bedbugs Powder .....	45		
ARBICO Organics Root Build 240 Mycorrhizal Fungi.....	31	JT Eaton Stick-Em Bed Bug Detector Traps.....	45		
ARBICO Organics Solar Fly Trap.....	27	KOCIDE 3000-O .....	38		
ARBICO Organics Yellow Insect Traps.....	16	LALGUARD M52 GR.....	21		
Armory SP .....	31	LALGUARD M52 OD .....	21		
Asperello T34 Biocontrol .....	36	Maxicrop Kelp Meal, 1-0-2.....	32		
Avenger AG Optima Burndown Herbicide.....	41	Maxicrop Soluble Seaweed Powder, 0-0-17 .....	32		
Avenger Roach Tablets .....	45	Mealybug Destroyer - <i>Cryptolaemus montrouzieri</i> .....	10		
AzaGuard .....	19	Mealybug Parasitoid - <i>Anagyrus spp.</i> .....	10		
BioCeres WP.....	19, 23	Milk Jugg Trap .....	27		
BioCeres EC.....	21	Milky Spore Powder.....	19		
Bite Free Stable Fly Trap .....	27	Minute Pirate Bug - <i>Orius insidiosus</i> .....	3		
Blue Sticky Ribbon Rolls .....	17	Mite Predator - <i>Amblyseius andersoni</i> .....	8		
BONIDE Captain Jack's Lawnweed Brew .....	41	Mite Predator - <i>Neoseiulus californicus</i> .....	8		
BONIDE Captain Jack's Neem Max.....	19	Mite Predator - <i>Neoseiulus fallacis</i> .....	9		
BONIDE Liquid Copper Fungicide.....	38	Mite Predator - <i>Phytoseiulus persimilis</i> .....	9		
BONIDE Rat Magic .....	43	Molt-X.....	19		
BONIDE Sulfur Plant Fungicide .....	38	Monterey B.t. ....	18		
Boogie Blue Water Filters .....	42	Monterey Complete Disease Control.....	37		
BotaniGard ES & 22WP <i>Beauveria bassiana</i> GHA .....	23	Monterey Garden Insect Spray.....	22		
BotaniGard MAXX.....	19	Monterey Liquid Copper Fungicide .....	38		
BSFL Nutrient + .....	30	Mosquito Bits .....	26		
BT NOW .....	18	Moth Egg Parasites - <i>Trichogramma spp.</i> .....	11		
Bug Blaster.....	42	Mycostop .....	37		
Captivator Fly Trap .....	27	Neptune's Harvest Fish & Seaweed Fertilizer, 2-3-1 .....	32		
Cease Biological Fungicide .....	37	Neptune's Harvest Fish Fertilizer, 2-4-1 .....	32		
Cueva Fungicide Concentrate .....	38	Neptune's Harvest Seaweed Plant Food, 0-0-1.....	32		
DeBug Turbo .....	38	NoFly WP .....	22		
DiPel Pro DF & DiPel DF.....	18	Orange Guard Fire Ant Control.....	43		
DTE Acid Mix, 4-3-6 .....	34	Orange Guard Home Pest Control .....	44		
DTE All Purpose Mix, 4-6-2 .....	34	Organic JMS Stylet-Oil.....	20		
DTE Azomite Granulated, 0-0-0.2 .....	35	OrganiShield .....	23		
DTE Azomite Powder, 0-0-0.2 .....	35	Organocide Bee Safe 3-in-1 Garden Spray.....	20		
DTE Bat Guano, 7-3-1 .....	34	Organocide Weed Taliator Weed & Grass Killer .....	41		
DTE Bio-Fish, 7-7-2 .....	34	OxiDate 2.0 .....	39		
DTE Bio-Live, 5-4-2 .....	34	Pest Wizard Yellow Sticky Traps.....	17		
DTE Blood Meal, 12-0-0.....	34	Pop-Up Greenhouse .....	28		
DTE Bone Meal, 3-15-0 .....	34	Prococo Coco Coir .....	29		
DTE Citrus Mix, 6-3-3 .....	34	PureCrop1 .....	20		
DTE Crab Meal, 4-3-0.....	34	PyGanic Gardening.....	19, 22		
DTE Fish Bone Meal, 4-12-0 .....	34	Rango.....	38		
DTE Granular Humic Acids.....	35	Red Scale Parasite - <i>Aphytis melinus</i> .....	10		
DTE Kelp Meal, 1-0-1.2.....	35	Regalia CG & Regalia.....	36		
DTE Langbeinite, 0-0-22 .....	35	Revenge Pantry Moth Traps.....	45		
DTE Neem Seed Meal, 6-1-2.....	35	Root Guard Gopher Wire Baskets.....	43		
DTE Rock Phosphate, 0-3-0.....	35	RootShield Plus Granules & RootShield Plus WP .....	36		
DTE Rose & Flower Mix, 4-8-4.....	35	Rove Beetle - <i>Dalotia coriaria</i> .....	6		
DTE Vegetable Garden, 4-4-4 .....	35	SaniDate 5.0.....	39		
Earth Harvest Gluten-8 Liquid Corn Gluten .....	40	Serenade ASO .....	37		
EcoMulch Rolls .....	40	Sil-Matrix LC.....	38		
EM•1 Microbial Inoculant.....	31	Spider Mite Destroyer - <i>Feltiella acarisuga</i> .....	8		
Enoz BioCare Clothes Moth Traps.....	45	Spider Mite Destroyer - <i>Stethorus punctillum</i> .....	9		
Enoz BioCare Flour & Pantry Moth Traps .....	45	Sticky Traps .....	16		
Enoz BioCare Gnat Stix.....	16	Sticky Strips Yellow Insect Traps.....	16		
Enoz Trap-N-Kill Spider & Insect Traps.....	45	SuffOil-X.....	20		

## ASK THE EXPERTS

Take advantage of our FREE consultation! Let us help solve your gardening and farming issues with our start to finish ARBICO Organics solutions. Our trained staff will help determine what problem you have (insect, disease, weed, nematode, critter, pet issue, fertility needs), offer solutions for immediate relief and prescribe a long term sustainable program for continued success.

## AUTO SHIP PROGRAM

We can automatically ship any product on a schedule so you won't run out. Popular auto ship products include: Fly Eliminators, Beneficial Nematodes, Predatory Mites as well as most in stock pest control and soil health products.

## PAYMENT OPTIONS

**Credit Cards** (ARBICO accepts all major credit cards) and **PayPal**.

**Mail Checks or Money Orders To:**

ARBICO Organics, 10831 N. Mavinee Dr., Ste. 185, Oro Valley, AZ 85737-9531

**We do not accept cash via mail.**

## CUSTOMER SERVICE

**All phone calls answered by a live person during regular business hours:** Monday through Friday, 8:00 AM - 4:30 PM (Arizona Time)

• Se habla Español

**Toll Free: 800-827-2847**

**International calls: 520-825-9785**

**Fax: 520-825-2038**

## CRITICAL INFORMATION FOR CERTIFIED ORGANIC GROWERS

Please be aware that the certified status of a product can change at any time without notification from the manufacturer or OMRI. Although we make every attempt to assure that the status of the products listed as certified organic are current and up-to-date, when purchasing a product we advise you to protect your certification by checking with your certifying agency that it is acceptable or by going online to OMRI at [www.omri.org](http://www.omri.org).

## LIVE DELIVERY & REFUND POLICY

**For products other than live insects:** Unused, unopened, undamaged items in original packaging can be returned within 30 days. For full details, see our Return Policy at [www.arbico-organics/category/return-policy](http://www.arbico-organics/category/return-policy).

**For live insects:** We guarantee that you will receive live beneficial insects (mites and beneficial nematodes). If your insects perish en route, we will gladly send you a replacement order. We cannot accept returns or make refunds for other reasons since these are perishable products with a limited lifespan and cannot be resold. We cannot guarantee results with live insects since we have no control over how the product is applied, the extent of the problem, and other variables. But if you are not satisfied with your results, we will cancel any unshipped orders and refund the portion of any prepayment that applies to unshipped orders.



## ARBICO Organics

10831 N. Mavinee Dr., Ste. 185  
Oro Valley, AZ 85737-9531

**800-827-2847**

Please call for  
product availability.



## Limitations and Disclaimers

This publication is designed and produced by ARBICO Organics solely for informational purposes. Reasonable efforts have been made to provide accurate information, but errors may occur. All insect quantities are approximate (and the "double tilde" symbol ≈ so indicates). All prices are subject to change without notice. Product specifications are provided by the manufacturers and are also subject to change without notice. Photographs are for illustrative purposes only.

Notwithstanding any other statements in this catalog, **all warranties, express and implied, including warranties of merchantability and fitness for a particular purpose, are hereby disclaimed and excluded.** By placing an order with ARBICO, buyer agrees that the limited remedies described in "Our Satisfaction Guaranties" are the sole and exclusive remedies available to buyer. All damages, including incidental and consequential damages, are hereby excluded.

## ARBICO Organics Brand Partners

Shop All These & More At [www.arbico-organics.com](http://www.arbico-organics.com)






10831 N. Mavinee Dr., Suite 185  
Oro Valley, AZ 85737

Presorted  
Standard  
U.S. Postage  
**PAID**  
ARBICO

# ARBICO FLY ELIMINATORS<sup>®</sup>

**SERIOUS FLY CONTROL**



*"We've been growing Fly Eliminators in our insectary for over 40 years. Join the 1,000's of satisfied ARBICO customers who use Fly Eliminators for fly control year after year!"*

*Sheri Herrera de Frey,  
Vice President,  
ARBICO Organics<sup>®</sup>*

## Only \$17.95

Per Shipment for 2-5 Horses  
USPS Shipping Included\* in Prices!

Number of Horses/Animals	Units Suggested <sup>†</sup>	VIP Pricing
1	1/4 Unit	\$14.95
2 - 5	1/2 Unit	\$17.95
6 - 10	1 Unit	\$27.95
11 - 15	1 1/2 Units	\$37.95
16 - 20	2 Units	\$49.95
21 - 25	2 1/2 Units	\$60.95
26 +	Please Call 1-800-827-2847	

**VIP Pricing Valid Through Dec. 31, 2024.**

**\*USPS shipping included up to 5 units.**

<sup>†</sup>These are units of measurement, not warranties or guarantees of performance. The total seasonal cost of Fly Eliminators<sup>®</sup> depends on the recommended number of shipments which may be different than what competitors may recommend. We recommend releasing a shipment every 2-4 weeks throughout the fly season, but releases ranging from 1-6 weeks are not uncommon. Customer experiences may vary. The quantity required and frequency of application can differ according to region, size and condition of property or stables, severity of fly problem, neighbors, manure management, number of animals and start date of program. All warranties, express or implied are disclaimed. One unit bag shown. © 2024 Arizona Biological Control, Inc.

**SPECIAL OFFER**

# \$10 OFF

**Any Order of \$75 or More**

With your catalog order or online purchase at [arbico-organics.com](http://arbico-organics.com).

**Special Offer Code: Winter24**

Expires: 01/31/2025 • Minimum \$75 purchase.

Cannot be used on Fly Eliminators • Cannot be used with any other offers  
Cannot be used on items with free shipping



1-800-827-2847 • [www.arbico-organics.com](http://www.arbico-organics.com)



© 2024 ARBICO Organics<sup>®</sup>. All Rights Reserved.

09/2024